

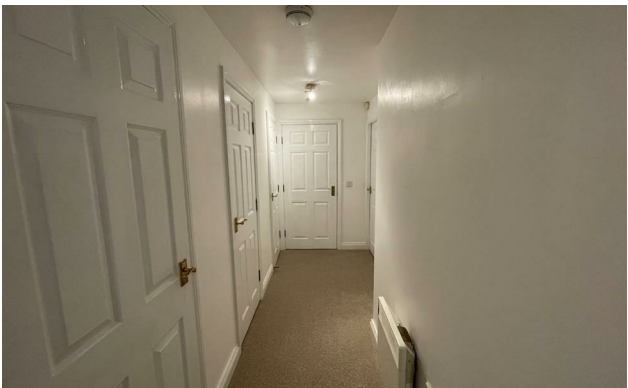
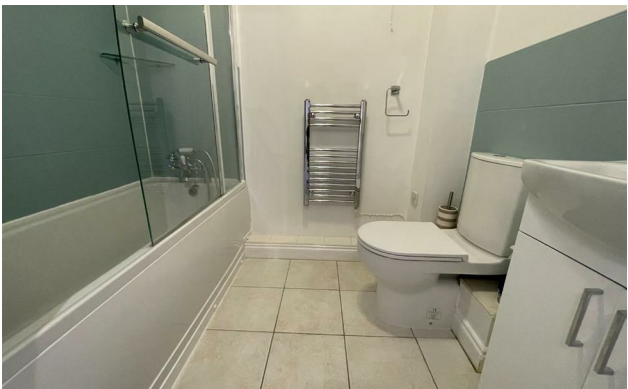


jordanfishwick

27 WOODCOURT 205 BROOKLANDS ROAD SALE M33 3PY
PCM £1,150 PCM

27 WOODCOURT 205 BROOKLANDS ROAD SALE M33 3PY

*** AVAILABLE FEBRUARY *** Jordan Fishwick are pleased to bring to the rental market, this well presented two bedroom first floor apartment situated in a very popular modern development on the corner of Brooklands Road and Maple Road close to local shops and metrolink station. The property is in excellent condition throughout and comprises: Entrance hallway with ample storage, spacious living room, fully fitted kitchen, two bedrooms - the master has an en-suite and a family bathroom. Part furnished. Allocated parking. To view call 0161 976 5080



- APARTMENT
- TWO DOUBLE BEDROOMS
- TWO BATHROOMS
- ALLOCATED PARKING
- CLOSE TO METROLINK
- COUNCIL TAX BAND C
- EPC RATING - C

Energy Efficiency Rating			Environmental Impact (CO ₂) Rating		
	Current	Potential		Current	Potential
Very energy efficient - lower running costs			Very environmentally friendly - lower CO ₂ emissions		
(92 plus) A			(92 plus) A		
(81-91) B			(81-91) B		
(69-80) C			(69-80) C		
(55-68) D			(55-68) D		
(39-54) E			(39-54) E		
(21-38) F			(21-38) F		
(1-20) G			(1-20) G		
Not energy efficient - higher running costs			Not environmentally friendly - higher CO ₂ emissions		
England & Wales	EU Directive 2002/91/EC		England & Wales	EU Directive 2002/91/EC	