



Chandos Grove

Salford



HILLS

In Excess of £220,000

Chandos Grove

Salford

Stylish Three Bedroom Bay-Fronted Period Property Located Within Easy Access of Salford Quays & Media City! Boasts two spacious reception rooms and a Fantastic Location - Close to Buile Hill Park! Council Tax band: A

Tenure: Freehold

- Spacious Three Bedroom Bay-Fronted Period Terraced Property
- Within Walking Distance of Weaste Tram Stop, which Provides Direct Access into Salford Quays, Media City & Manchester City Centre
- Bay-Fronted Lounge and a Spacious Dining Room
- Three generous sized bedrooms
- Spacious fitted kitchen
- Modern three-piece bathroom suite
- Low-Maintenance Courtyard Gardens to the Front and Rear
- Within Easy Access of a Range of Amenities, Local Schooling and Parks
- Fantastic First Time Home or Investment
- Early Viewing is Recommended!



HILLS



Entrance Hallway

13' 6" x 3' 6" (4.11m x 1.06m)

Lounge

14' 6" x 10' 9" (4.41m x 3.27m)

Dining Room

15' 9" x 11' 4" (4.79m x 3.46m)

Kitchen

12' 10" x 9' 8" (3.92m x 2.95m)

Landing

Bedroom One

11' 11" x 14' 2" (3.62m x 4.33m)

Bedroom Two

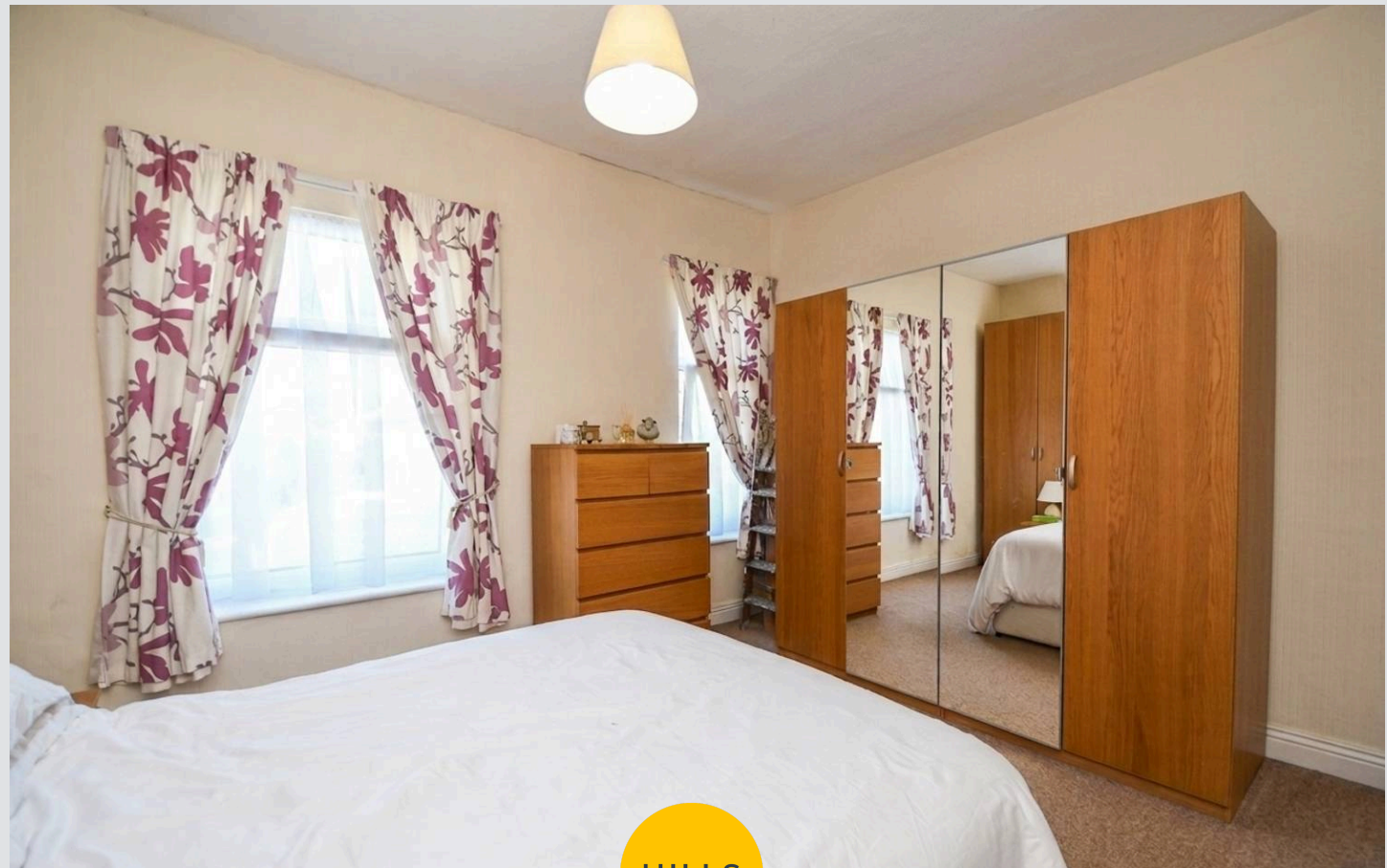
9' 11" x 12' 6" (3.01m x 3.82m)

Bedroom Three

7' 9" x 8' 10" (2.36m x 2.68m)

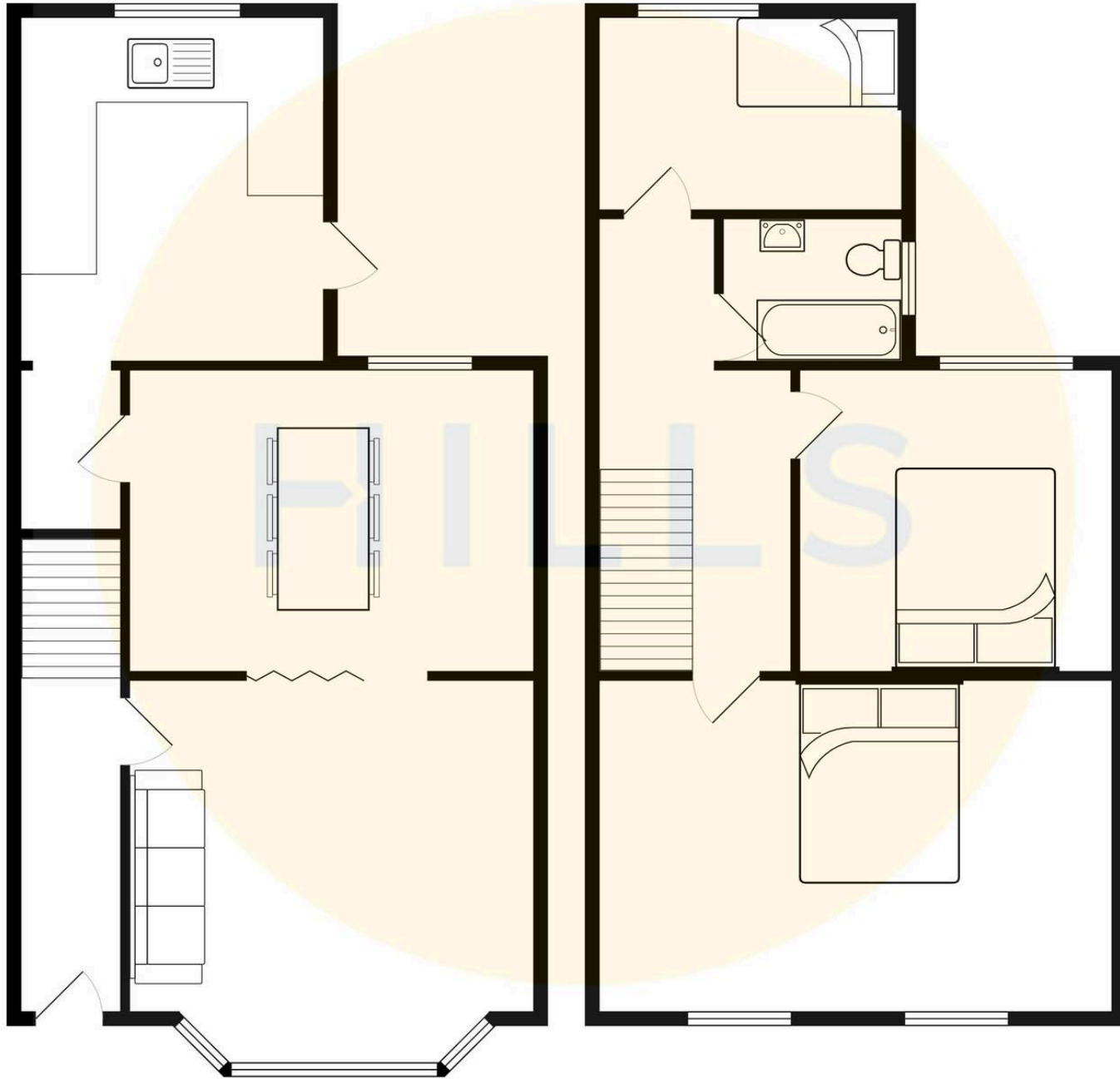
Bathroom

7' 4" x 5' 0" (2.23m x 1.52m)



HILLS







Hills | Salfords Estate Agent

Hills Residential, Sentinel House Albert Street - M30 0SS

0161 707 4900

sales@hills.agency

www.hills.agency/



By law, we are required to conduct anti-money laundering checks on all potential buyers and sellers. In line with HMRC guidelines, our trusted partner, Coadjute, will securely manage these checks on our behalf. A non-refundable fee of £45 + VAT per person will apply, and Coadjute will handle the payment. Once an offer is accepted, Coadjute will send a secure link for you to complete the biometric checks. These checks must be completed before we can send the memorandum of sale to all parties. PLEASE NOTE: The Agent has not tested any equipment, fixtures, fittings or services so cannot verify that they are in working order or fit for the purpose. References to the properties tenure are based on information supplied by the seller. You are advised to check the availability of this property before travelling any distance to view. Every effort has been made to ensure these particulars are correct and not misleading but their accuracy is not guaranteed nor do they form part of any contract.