



Hanover Gate Mansions, Park Road, NW1

£2,600,000

- Period Mansion Block
- Four large bedrooms
- Three bathrooms
- 2,104 sq ft living space
- High ceilings
- Caretaker
- Separate kitchen
- Fitted wardrobes
- Desirable location
- Great transport links
- Lease is over 900 years
- No ground rent
- Service charge is £2300 approx per quarter

A well-proportioned apartment of approx. 2,104 sq. ft., located on the elevated first floor of a period mansion block on Park Road.

The property features a spacious entrance hallway leading to a bright reception room with high ceilings. There is a separate galley kitchen fitted with modern appliances and good storage. The accommodation comprises four bedrooms and three bathrooms, including a principal bedroom with en suite. Fitted wardrobes are provided in several rooms.

Residents benefit from a building caretaker. The property is situated opposite Regent's Park and within walking distance of both Baker Street and Marylebone stations. Baker Street station provides access to the Bakerloo, Jubilee, Metropolitan, Circle and Hammersmith & City lines, while Marylebone station offers National Rail services as well as the Bakerloo line, providing convenient connections across London and beyond.



PROPERTY

*Hanover Gate Mansions,
Park Road, NW1*

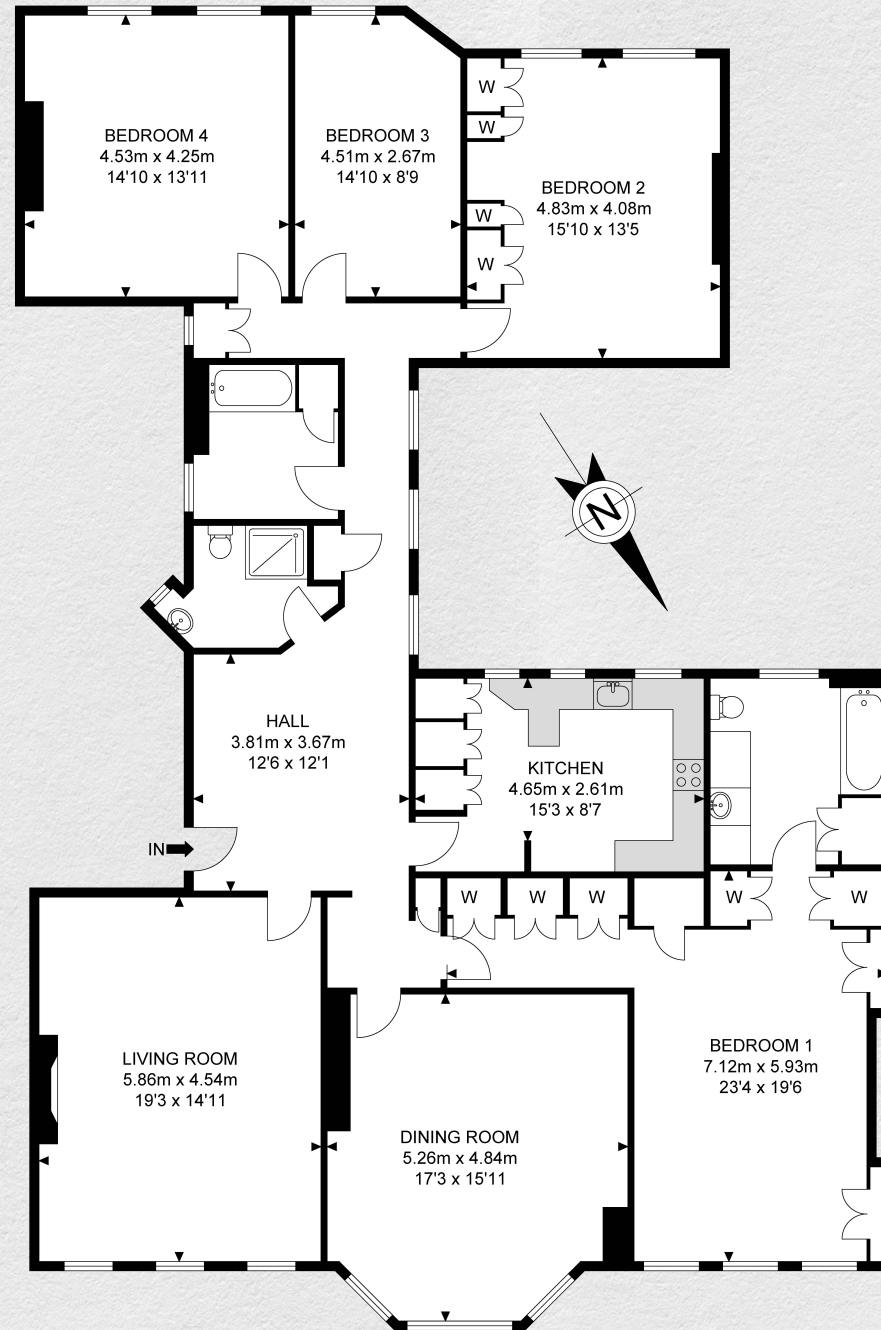
SIZE

2,104 sq ft

Four bedrooms | Three bathrooms

CONTACT

*0207 856 0396
info@one-london.uk
www.one-london.uk*



1st Floor

HMG41