



Elizabeth Court, St. Albans, AL4 9JD

Offers Over £550,000

3 2 2



A beautifully kept three-bedroom end of terrace family home tucked away in a quiet cul-de-sac, right in the heart of the popular Jersey Farm area of St Albans.

This lovely home is ideal for modern family life, with a bright and open layout that works perfectly for both everyday living and entertaining. You're just a short walk from highly regarded local schools, a great mix of shops and places to eat, and surrounded by green spaces including Jersey Farm Woodland Park and Heartwood Forest.

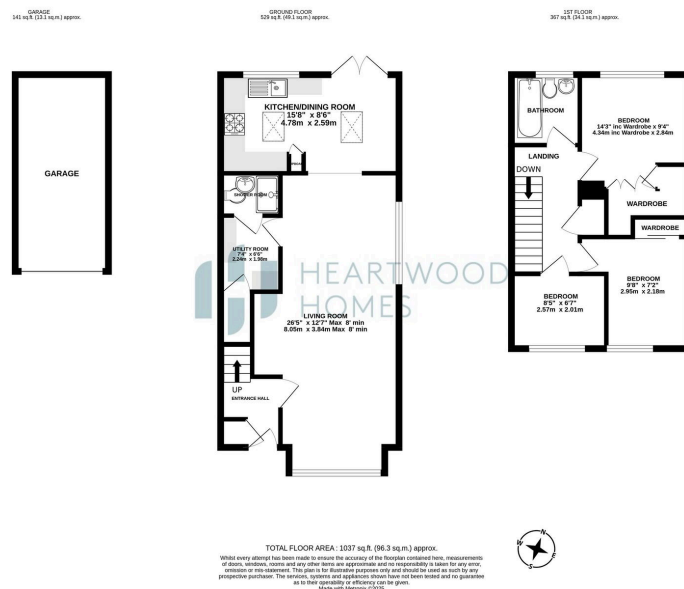
Step inside and you're welcomed by a neat and welcoming entrance hall. The main living space is open plan and a great size, with a bay window to the front and a bright, modern kitchen/dining area at the back that opens straight out onto the garden – great for indoor-outdoor living. There's also a handy utility room and a ground floor shower room, which is a real bonus for busy households. You have the added benefit of a modern boiler installed approximately two years ago.

Upstairs, you'll find three well-proportioned bedrooms and a stylish family bathroom.

Outside, there's a smart front garden and a beautifully landscaped rear garden – ideal for summer BBQs and relaxed family time. There's also a garage en bloc, giving you that extra storage or parking space and there is lots of residents on street parking.

Get in touch today to arrange your viewing – we'd love to show you around.





- Immaculately presented 3-bedroom family home
- Peaceful cul-de-sac location in sought-after Jersey Farm
- Modern kitchen/diner with direct garden access
- Stylish and contemporary family bathroom
- Garage en bloc for extra storage or parking
- Close to excellent schools, local shops, and woodland walks
- Bright and spacious open plan living/dining room
- Handy utility room and ground floor shower room
- Landscaped rear garden – perfect for relaxing or BBQs
- EPC Grade C

