



WHERE STANDARDS MATTER

Spencer Munson  
41 High Road  
South Woodford E18 2QP

Tel: 020 8989 3331

swoodford@spencermunson.co.uk

Website: spencermunson.co.uk



## Hermon Hill, Wanstead, E11

SPENCER MUNSON are pleased to offer this well presented one bedroom ground floor conversion apartment in the sought after area with a popular village atmosphere of Wanstead with its historic park, eclectic mix of boutiques, shops, cafés, bars and restaurants and only a 6 minute walk to Snaresbrook Central Line Station which is only three stops to Stratford (Olympic Park, Westfield shopping and links to DLR and mainline networks) and onto The City and West End of London. Wanstead Central Line station on the loop line is also nearby providing further commuting options. This spacious apartment boasts a large living room with open plan fitted kitchen and a good size bedroom with fitted wardrobes and bathroom/wc. It has an attractive wooden flooring, high ceilings and use of a communal garden.

Situated in a resident's parking area (please check with the Local Authority for availability and price). Please call Spencer Munson to arrange a viewing as this property will be popular and is offered on an unfurnished basis and available 9th June 2026 EPC rating C. Council Tax C

**Rent: £1,550 - Monthly**



## Hermon Hill, Wanstead, E11

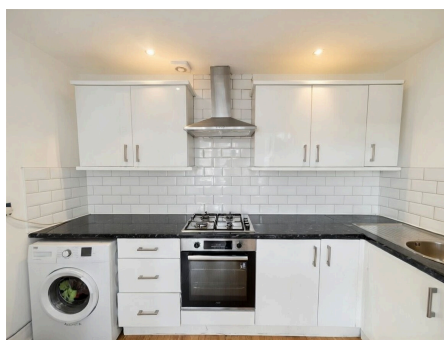
### Lounge

4.66m (15'3) x 3.29m (10'10)



### Kitchen

3.22m (10'7) x 1.49m (4'11)



### Bedroom One

3.73m (12'3) x 3.52m (11'7)

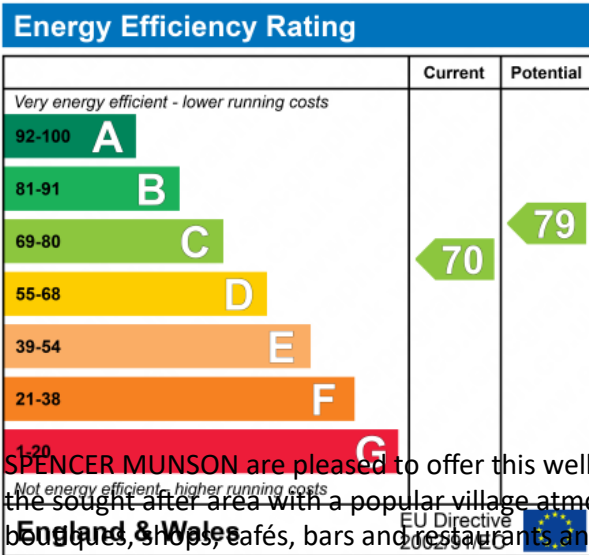


### Bathroom



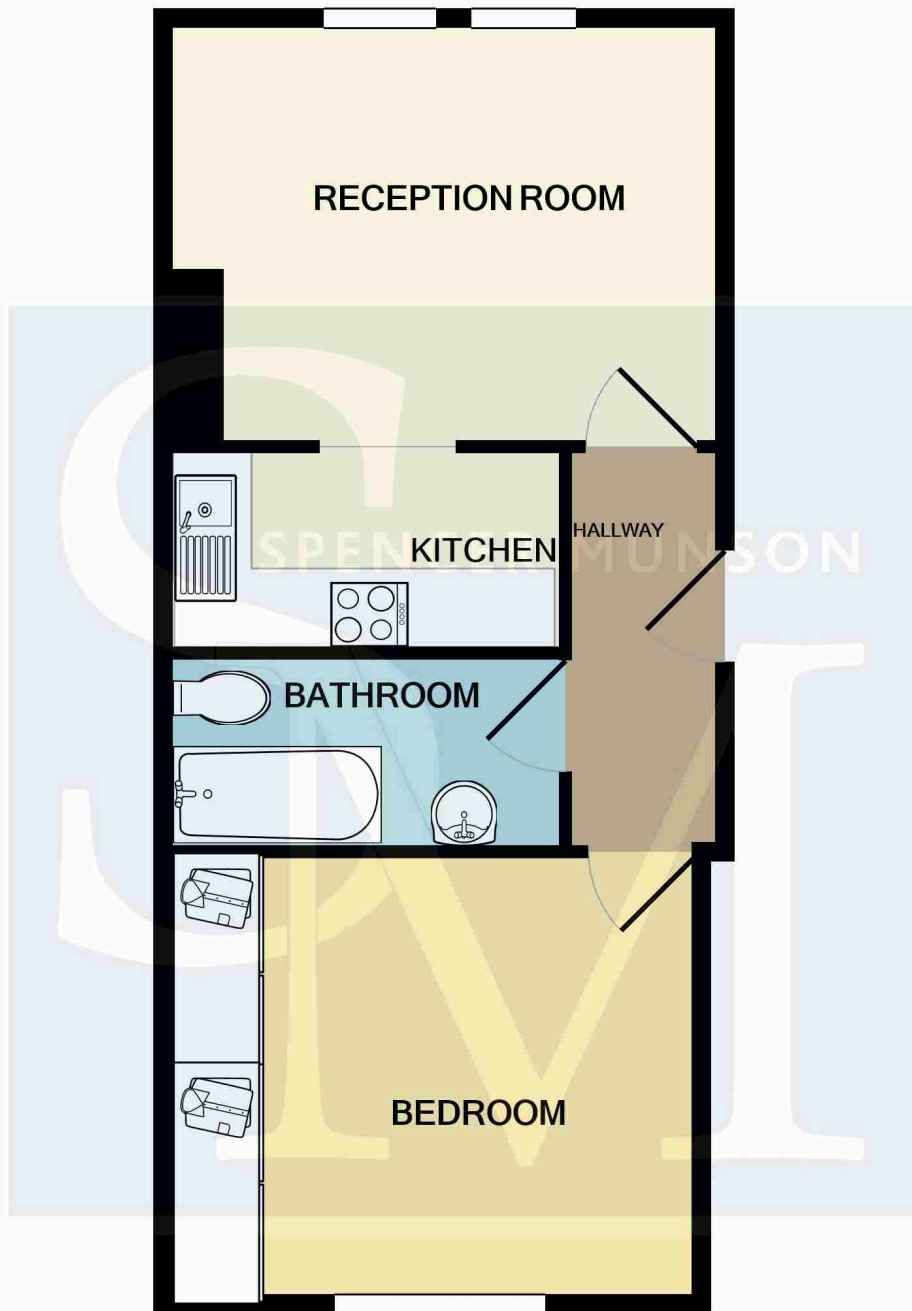
### Communal Garden





SPENCER MUNSON are pleased to offer this well presented one bedroom ground floor conversion apartment in the sought after area with a popular village atmosphere of Wanstead with its historic park, eclectic mix of pubs, shops, cafés, bars and restaurants and only a 6 minute walk to Snaresbrook Central Line Station which is only three stops to Stratford (Olympic Park, Westfield shopping and links to DLR and mainline networks) and onto The City and West End of London. Wanstead Central Line station on the loop line is also nearby providing further commuting options. This spacious apartment boasts a large living room with open plan fitted kitchen and a good size bedroom with fitted wardrobes and bathroom/wc. It has an attractive wooden flooring, high ceilings and use of a communal garden.

Situated in a resident's parking area (please check with the Local Authority for availability and price). Please call Spencer Munson to arrange a viewing as this property will be popular and is offered on an unfurnished basis and available 9th June 2026 EPC rating C. Council Tax C

**Hermon Hill, Wanstead, E11**

Whilst every attempt has been made to ensure the accuracy of the floor plan contained here, measurements of doors, windows, rooms and any other items are approximate and no responsibility is taken for any error, omission, or mis-statement. This plan is for illustrative purposes only and should be used as such by any prospective purchaser. The services, systems and appliances shown have not been tested and no guarantee as to their operability or efficiency can be given  
Made with Metropix ©2020

**Disclaimer**

These particulars are intended to give a fair and substantially correct overall description for the guidance of intending tenants/purchasers and do not constitute an offer or part of a contract. Prospective tenants/purchasers and/or lessees should seek their own professional advice. All descriptions, dimensions, reference to condition, fixtures, fittings and necessary permissions for use and occupation and other details are given in good faith and are believed to be correct. However, intending tenants/purchasers should not rely on them as statements or representations of fact, but must satisfy themselves by inspection or otherwise as to the correctness of each of them. Fixtures and fittings shown in pictures and on viewings may well not be included in any tenancy/sale and any prospective tenant/purchaser must clarify this for themselves. All measurements and floorplans are approximate and produced as a guide in good faith. Please note that some of the furniture and decor items shown in these images have been digitally added using AI technology for illustrative purposes. The actual property may differ in appearance. Prospective buyers or renters are encouraged to visit the property in person to get an accurate representation.