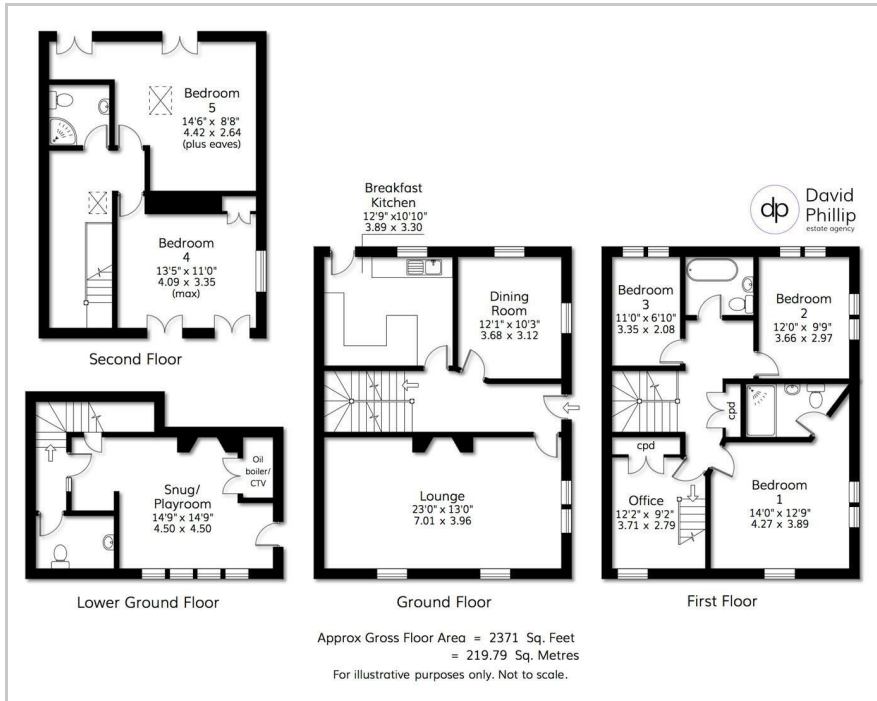




Castley Hall West Castley Lane, Otley, LS21 2PY
Price Guide £925,000

Floor Plan



Area Map



Accommodation

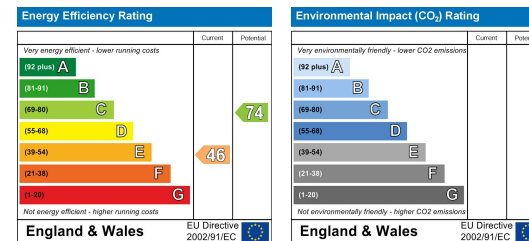
- * OFFERED CHAIN FREE * - A Particularly Fine Grade II Listed Stone Built Country Home
- A Semi-Detached Property Offering Five Bedrooms and Three Bathrooms
- Commanding Stunning Panoramic Views Across Picturesque Wharfedale
- Approximately 2,300 sq. ft. Of Flexible Spacious Living Space
- Formal Lawned Gardens including South Facing Terraces
- Private Gravelled Drive providing Large Parking Area with Garaging
- North Yorkshire Harrogate Council Tax Band G
- Energy Performance Certificate (EPC) Rating E



Viewing

Please contact our David Phillip Estate Agents Office on 01134 676 400 if you wish to arrange a viewing appointment for this property or require further information.

Energy Efficiency Graph



These particulars, whilst believed to be accurate are set out as a general outline only for guidance and do not constitute any part of an offer or contract. Intending purchasers should not rely on them as statements of representation of fact, but must satisfy themselves by inspection or otherwise as to their accuracy. No person in this firm's employment has the authority to make or give any representation or warranty in respect of the property.