



Caversham Road, NW9

£525,000

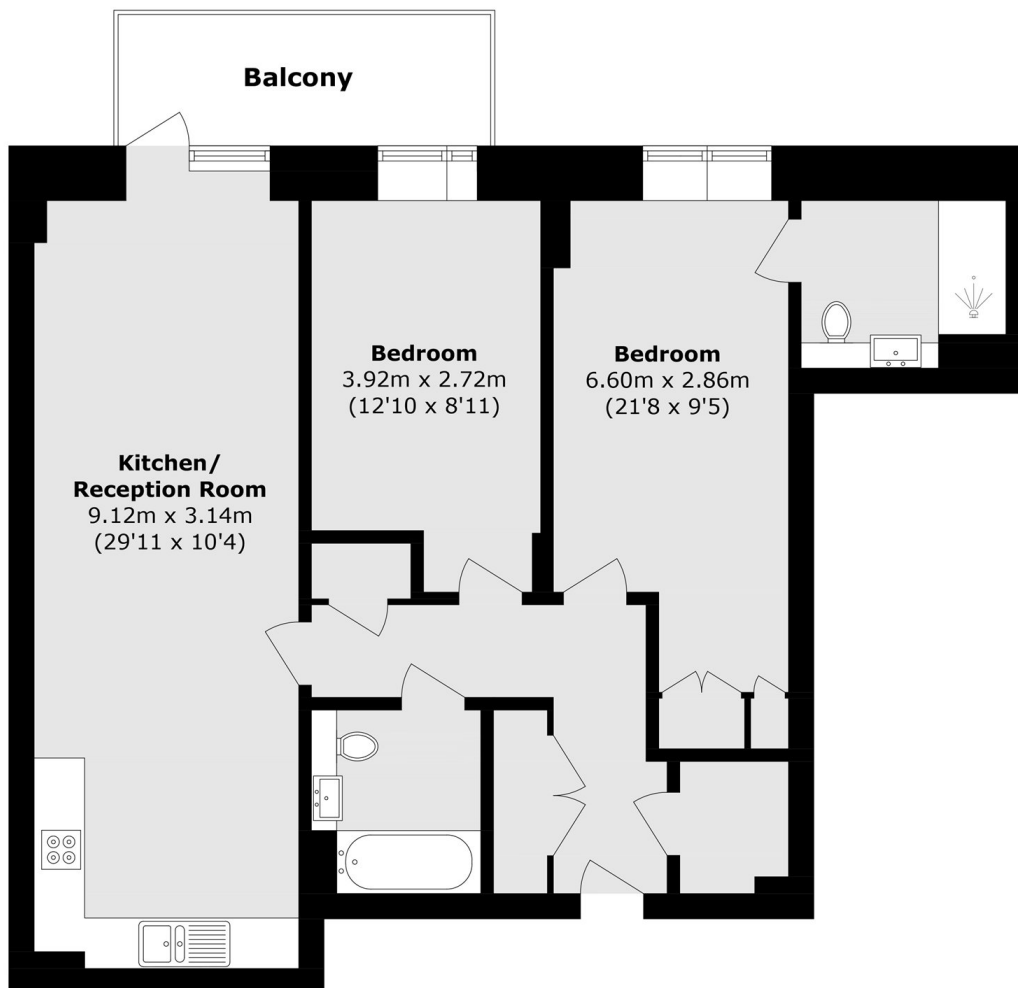
A stunning two double bedroom flat located on the seventh floor of this prestigious block. This home comes with a private balcony, two bathrooms, a large kitchen / reception room and benefits from private parking.

Cornelia House is conveniently located within close access of Colindale underground station and many local shops, cafés and restaurants.

Features

- Two Double Bedrooms
- Two Bathrooms
- Excellent Condition
- Private Parking
- Bright and Spacious
- Private Balcony

Caversham Road, London, NW9



Seventh Floor

Total area (approx.): 81.6 sq. m (878.3 sq. ft)
Balcony area (approx.): 7.3 sq. m (78.6 sq. ft)