



6 Cygnet Court, Reigate Road, Leatherhead. KT22 8QZ
£3,300 pcm

DAVIES
PROPERTY PARTNERS



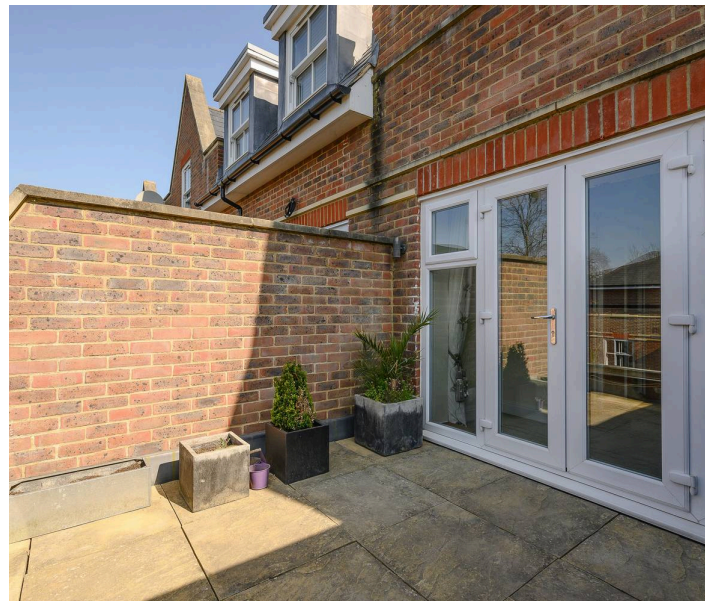
6 Cygnet Court, Reigate Road

Leatherhead, KT22 8QZ

Council Tax band: F

EPC Rating B

- Newly decorated and carpeted, well planned and an abundance of light
- Four bedrooms, three bathrooms, modern kitchen-breakfast room and spacious reception room
- Range of outside spaces; large smart patio, front garden and first floor terrace
- Off-street parking for two cars
- Less than a mile to the town centre and just over a mile to Leatherhead train station
- Unfurnished and available immediately

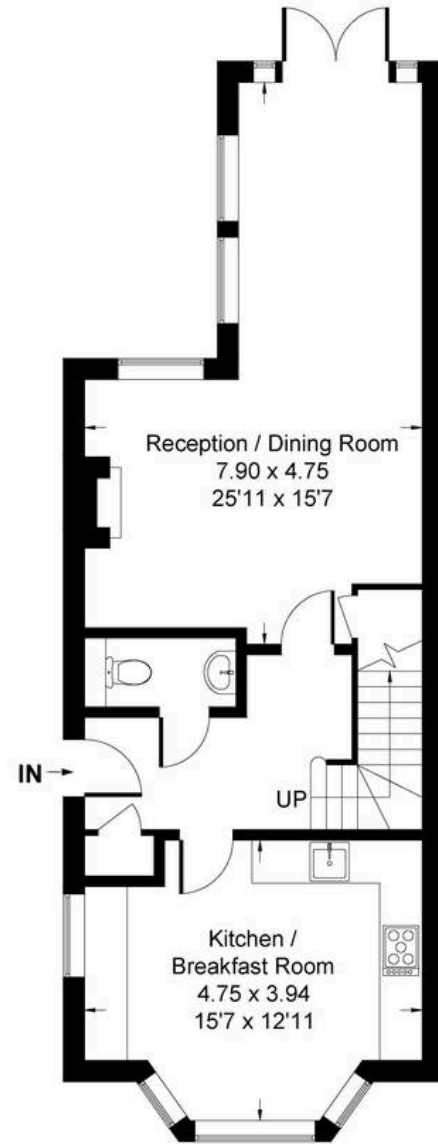
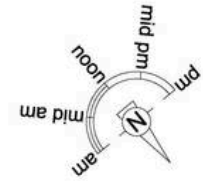


Call us to arrange a viewing on (01932) 588288

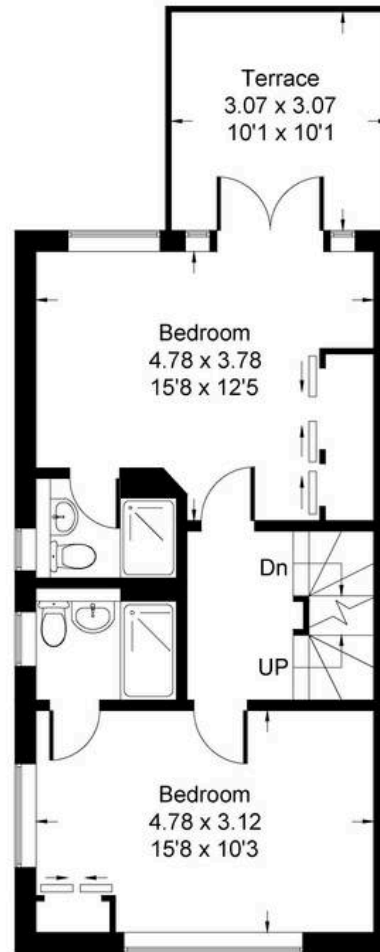


Reigate Road, Leatherhead KT22

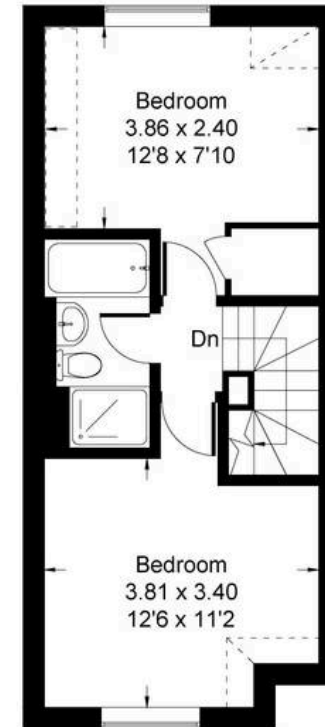
Approximate Gross Internal Area = 140.1 sq m / 1508 sq ft



Ground Floor



First Floor



Second Floor

Floor plan produced in accordance with RICS Property Measurement Standards incorporating International Property Measurement Standards (IPMS2 Residential).
Produced for DAVIES PROPERTY PARTNERS by IDENTIKA LTD

DAVIES
PROPERTY PARTNERS