



Holly Court, West Parkside, Greenwich SE10 0BS



Holly Court, Greenwich SE10

Leasehold (984 years remaining)

Offering both an allocated parking space & a large private terrace, this spacious 762 sq. ft. (70.7 sq. m.) ground floor flat comes to market. Perfectly located in North Greenwich with the additional benefit of no chain.

Key Features

- 2 Bedrooms, 1 Bathroom
- Large private terrace
- Perfect first home
- Council Tax: **C**
- Service Charge: **£3,600 P/A**
- Ground Rent: **£300 P/A**
- Excellent transport links
- EPC: **B**

The accommodation comprises; a large entrance hallway with doors leading to all rooms. The reception room is a generous size at 20'6 x 15'0 with sliding doors leading out to the 39'2 x 7'3 private terrace that runs the entire length of the property. The primary bedroom is a good sized double room at 13'2 x 10'4 with built-in wardrobe and the second bedroom is 13'2 x 6'11 which would make an ideal home office. Completing this property is the family bathroom.

Holly Court is located a short walk 15-minute from North Greenwich station, providing excellent links to Canary Wharf & The City via the Jubilee line. The O2 is also close by with the many attractions within, including bars and restaurants.

Transport connectivity is exemplary, with Greenwich station providing National Rail and DLR services, whilst North Greenwich offers direct Jubilee line access to Canary Wharf and the West End. The Thames Clipper river bus service adds another convenient commuting option. Cutty Sark DLR station further enhances connections across East London.









Holly Court

Approximate Gross Internal Area = 70.7 sq m / 762 sq ft

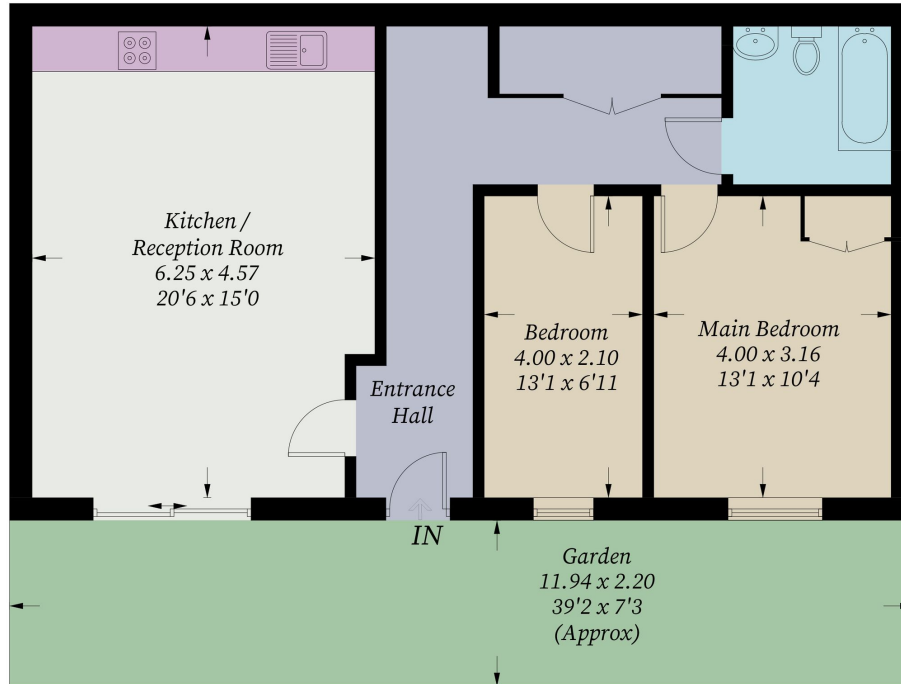


Illustration for identification purposes only, measurements are approximate, not to scale. Fourlabs.co © (ID1305738)