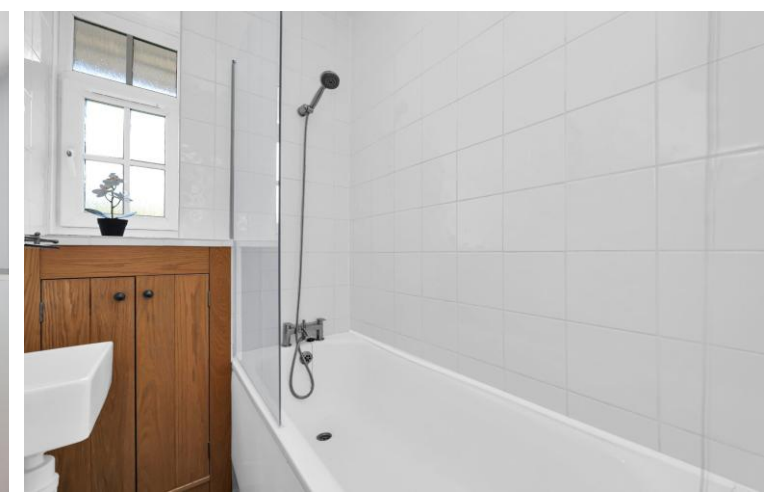
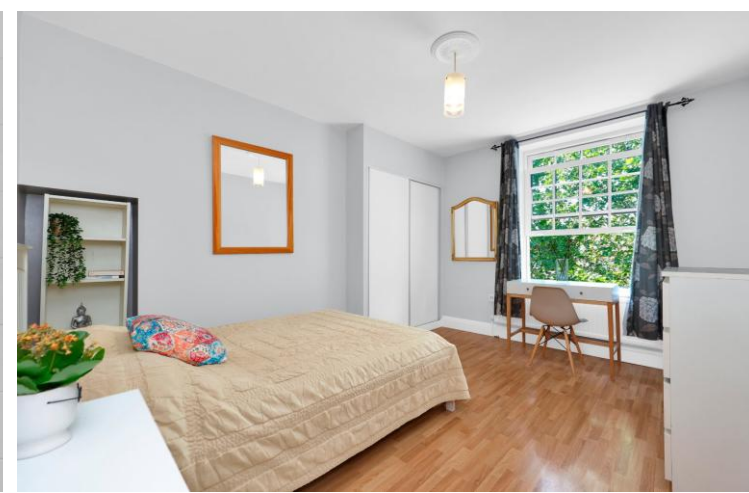




Wenham House
Ascalon Street, SW8

CHESTERTONS





A bright and well-presented two double bedroom apartment extending to approximately 548 sq ft (51 sq m), situated on the third floor of this well-maintained purpose-built development with lift access.

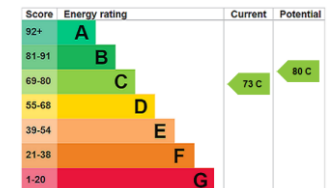
The property is offered in good decorative order throughout and comprises a spacious reception room with ample space for both seating and dining, a separate fitted kitchen, two well-proportioned double bedrooms, and a modern bathroom. The principal bedroom benefits from built-in wardrobes, while additional storage is provided off the entrance hall.

Flooded with natural light, the apartment enjoys a bright and airy feel throughout and offers a practical, well-balanced layout.

Ideally located, the property is within 0.3 miles of distance of Battersea Power Station (Northern Line), providing swift access to the West End, the City and King's Cross. The extensive amenities of Nine Elms and the iconic Battersea Power Station development, including an excellent selection of shops, cafés, restaurants and leisure facilities, are all close by, together with the green open spaces of Battersea Park and the River Thames.

- 548 sqft apartment
- Two well-proportioned double bedrooms
- Lift access
- Communal garden
- Off street parking
- 0.3 from Battersea Power Station

Asking Price £420,000



Tenure: Leasehold 89 years 8 months

Service Charge: TBC

Ground Rent: TBC

Local Authority: London Borough of Wandsworth

Council Tax Band: C

Chestertons Battersea Park & Nine Elms Sales

62-64 Battersea Bridge Road

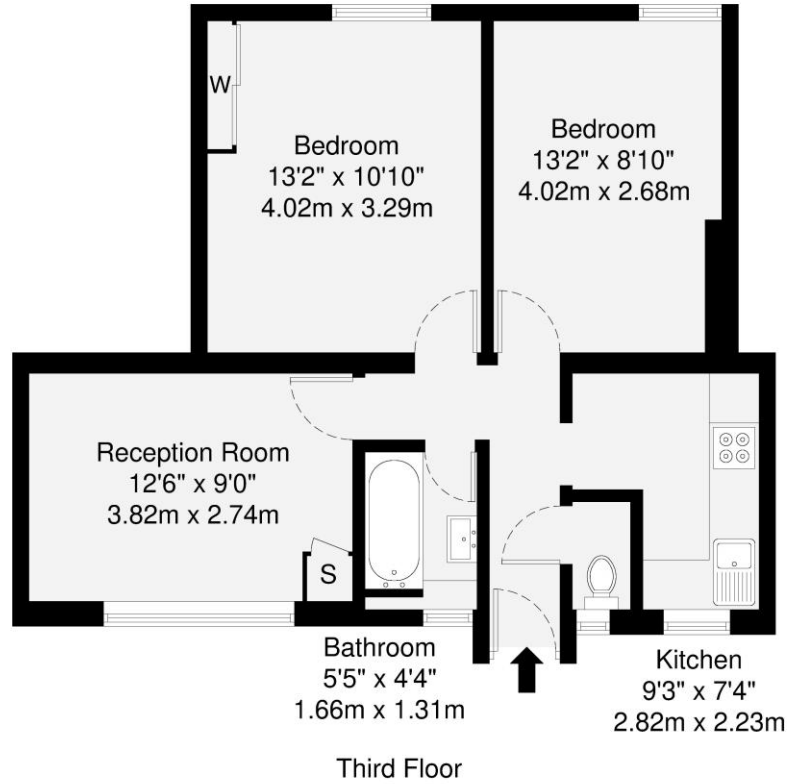
London

SW11 3AG

batterseapark@chestertons.co.uk

0203 040 8700

chestertons.co.uk



GROSS INTERNAL AREA (GIA)
The footprint of the property
51 sq m / 548 sq ft

TOTAL STORAGE SPACE
Storage and wardrobe total area
0.7 sq m / 7 sq ft

EXTERNAL FEATURES
Garden, Balcony, Terrace, Verandah etc.
0.0 sq m / 0.0 sq ft

RESTRICTED HEAD HEIGHT
Limited use area under 1.5m
0.0 sq m / 0.0 sq ft

Disclaimer: Floorplan measurements are approximate and are for illustrative purposes only. While we do not doubt the floorplan accuracy and completeness, you or your advisors should conduct a careful, independent investigation of the property in respect of monetary valuation.

Maison
VUE

