



Price
£700,000

Freehold

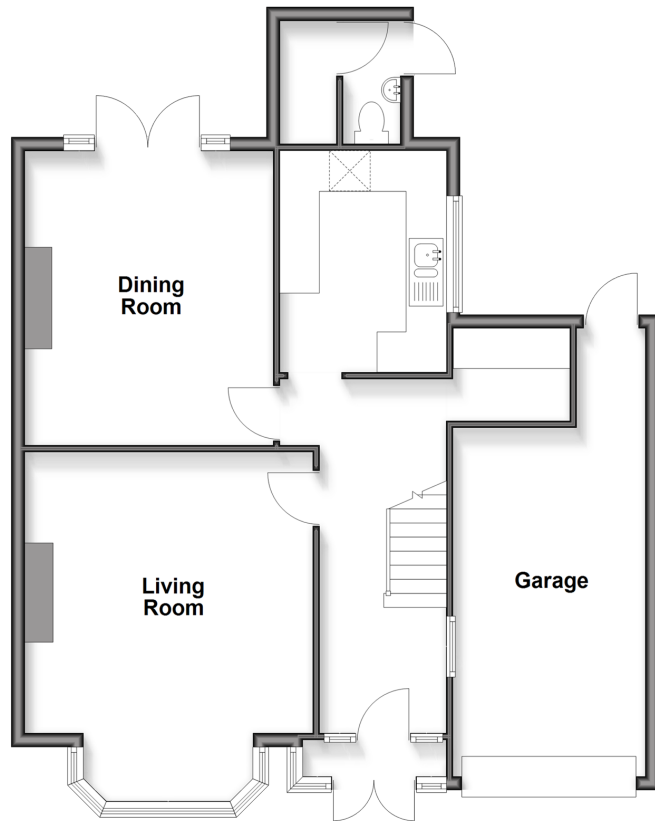
3x  1x  2x 

**Greencourt Gardens,
Croydon, Surrey, CR0**

cubitt & west
Helping you move forwards

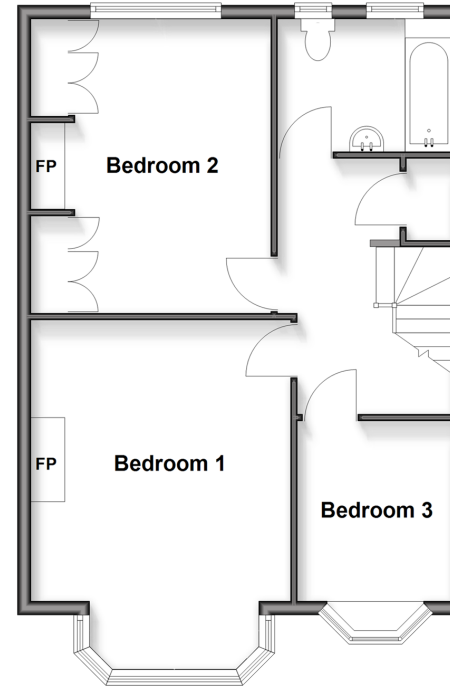
Ground Floor

Approx. 80.2 sq. metres (863.3 sq. feet)



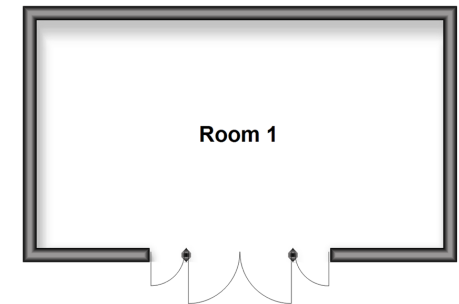
First Floor

Approx. 56.1 sq. metres (603.8 sq. feet)



Outbuilding

Approx. 20.3 sq. metres (218.5 sq. feet)



Accommodation

GROUND FLOOR

Porch
Hallway
Living Room: 17'7 x 13'8 (5.36m x 4.17m)
Dining Room: 14'9 x 11'9 (4.50m x 3.58m)
Kitchen: 10'8 x 7'10 (3.25m x 2.39m)
Utility Room : 6'2 x 4'4 (1.88m x 1.32m)
Separate Toilet

FIRST FLOOR

Landing
Bedroom 1: 18'3 x 12'6 (5.57m x 3.81m)
Bedroom 2: 14'3 x 11'8 (4.35m x 3.56m)
Bedroom 3: 8'9 x 7'4 (2.67m x 2.24m)
Family Bathroom : 8'0 x 6'11 (2.44m x 2.11m)

OUTBUILDING

Summer House: 19'8 x 11'1 (6.00m x 3.38m)

OUTSIDE

Front Garden
Back Garden
Garage
Off-Road Parking



Main features

- Ready to move into family home
- Moments away from local high street and transport links
- In the catchment area for outstanding schools
- Outbuilding perfect for home working
- Ample storage throughout
- Garage and off-road parking



Nearest Schools

Primary Schools: St John's CofE Primary 0.7 miles, Woodside Junior School 0.7 miles, Ashburton Junior School 0.7 miles

Secondary Schools: Trinity School 0.2 miles



Transport Information

Train Stations: East Croydon 1.2 miles, Selhurst 1.4 miles, Norwood Junction 1.4 miles



Address

Greencourt Gardens, Croydon, Surrey, CR0



Directions

For directions to this property please contact us.



cubitt&west
Helping you move forwards

Call Shirley Branch 020 8654 3037 ■ [cubittandwest.co.uk](https://www.cubittandwest.co.uk)



■ Legal advice should be taken to verify fixtures/fittings, planning, alterations and/or lease details ■ Appliances & services are untested, dimensions are approximate and floor plans are not to scale

21711805/20260220/GG/PH