

**Location:**

Cumberland Road is located close to the amenities of Acton and Shepherd's Bush. Both Acton Central and Acton Main Line stations are close by for links to and from central London.

**Key points:**

- Period Conversion
- One Double Bedroom
- Ideal For Couple
- Spacious Reception Room
- Poets Corner
- Walking distance to Acton Mainline Elizabeth Line

# Do Better:

**Acton**  
lettings@astonrowe.co.uk

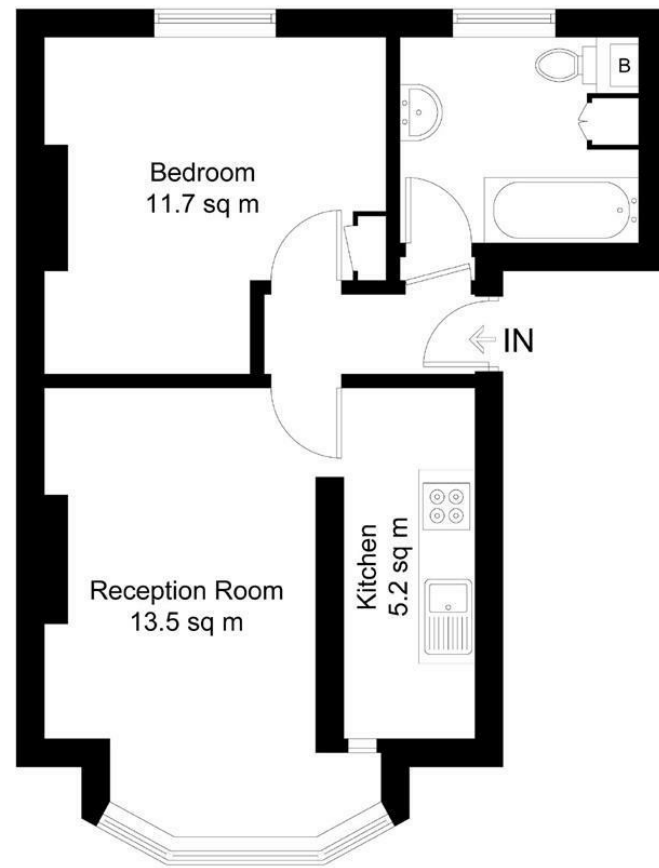
57-59 Churchfield Road,  
Acton, London, W3 6AY

020 8992 3600



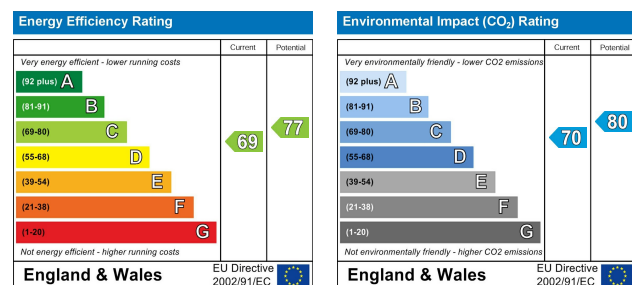
### Cumberland Road

Approximate Gross Internal Area = 41.2 sq m / 443 sq ft



### First Floor

Illustration for identification purposes only, measurements are approximate, not to scale. FloorplansUsketch.com © 2016 (ID301583)



**To Let: £1,800 Per Month**  
**Cumberland Road, Acton W3 6EZ**

- 1 Reception Rooms
- 1 Bedrooms
- 1 Bathrooms



A well presented one bedroom apartment, situated on the first floor of an impressive period property in the heart of Poets Corner. Ideal for a couple or a single professional, this property is neutrally decorated throughout and boasts a modern and separate kitchen, spacious reception room, double bedroom with ornate fireplace and a large bathroom. This property is located a convenient distance from Acton main line, Acton central and North Acton stations as well as easy access for the A40.

**The current tenant says:**

**The property is within walking distance of good local primary schools including Derwentwater Primary.**

**What's better:**

**A charming one bedroom apartment in Poets Corner.**

