



Huntington House, Prince of Wales Drive Asking Price £1,600,000

Extending to an impressive 1,223 sq ft, this beautifully presented three-bedroom, two-bathroom apartment has been thoughtfully designed to maximise light, space and comfort throughout. The spacious open-plan reception and kitchen area creates the perfect setting for both everyday living and entertaining, with floor-to-ceiling windows opening directly onto a private balcony — an ideal space to relax or enjoy al fresco dining.

The principal bedroom benefits from fitted storage and a stylish en suite bathroom, while two further well-proportioned bedrooms provide excellent flexibility for family living, guests or home working. A modern family bathroom, high-quality finishes and ample built-in storage complete the accommodation.

Huntington House forms part of the prestigious Prince of Wales Drive development in the heart of Battersea, offering an exceptional blend of contemporary design, generous living space and prime London convenience.

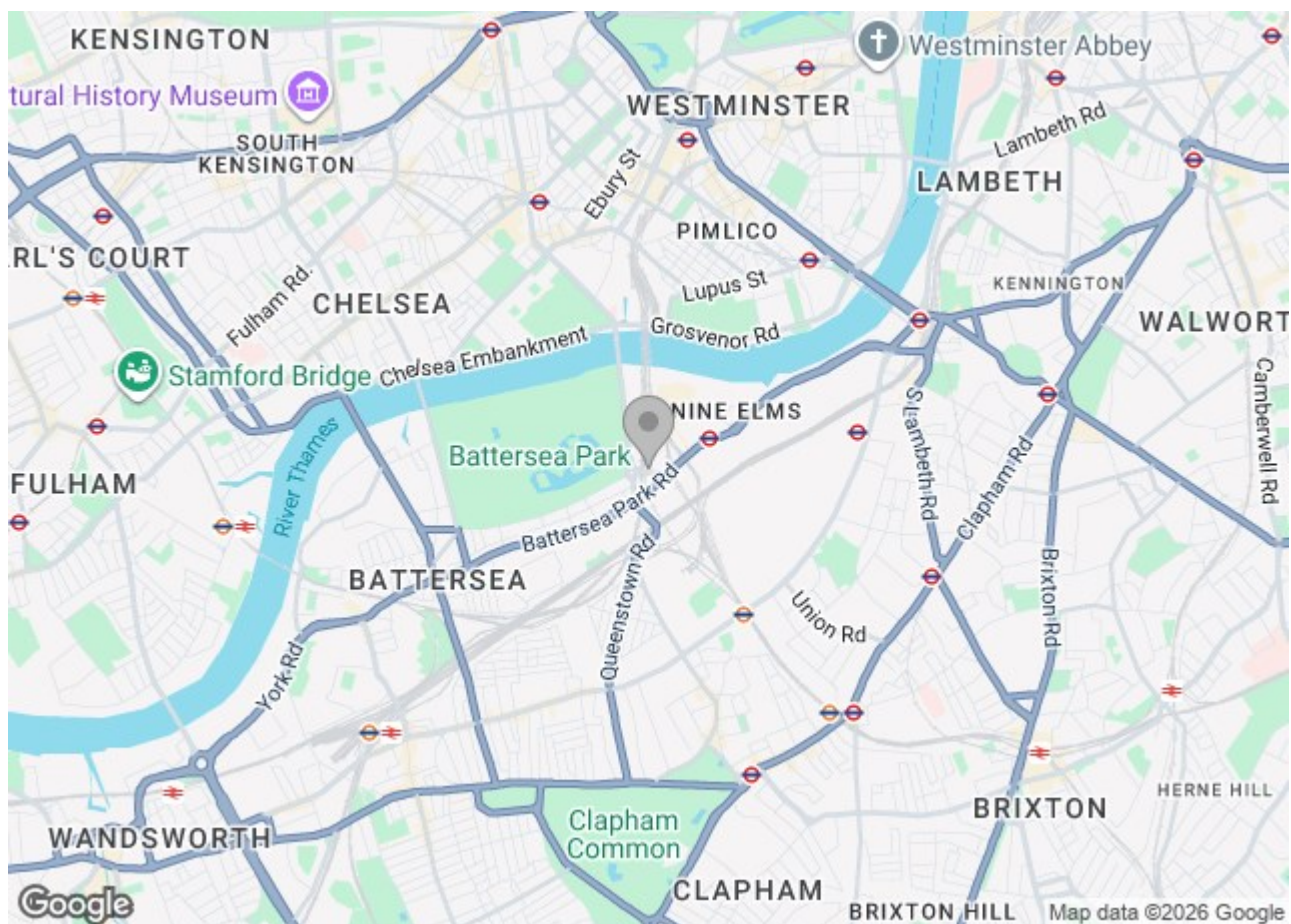
Residents of Prince of Wales Drive enjoy access to outstanding on-site amenities and beautifully landscaped surroundings, all moments from Battersea Park, Chelsea and the River Thames. The apartment further benefits from secure parking, adding rare convenience to this highly sought-after central London location.

Combining space, style and superb connectivity, Huntington House presents a fantastic opportunity to acquire a premium apartment within one of SW11's most desirable developments.

11 Palmer Road London



- Three double bedrooms
- Meeting rooms and work stations
- Private balcony
- Two bathroom (one en suite)
- 24 Hours Concierge
- Includes underground parking
- Swimming pool & spa
- Excellent location
- Furniture are computer generated images (CGI) for example only





Floor Plan

Huntington House,
Prince of Wales Drive, SW8
Approximate Gross Internal Area
114.56 sq m / 1,233 sq ft

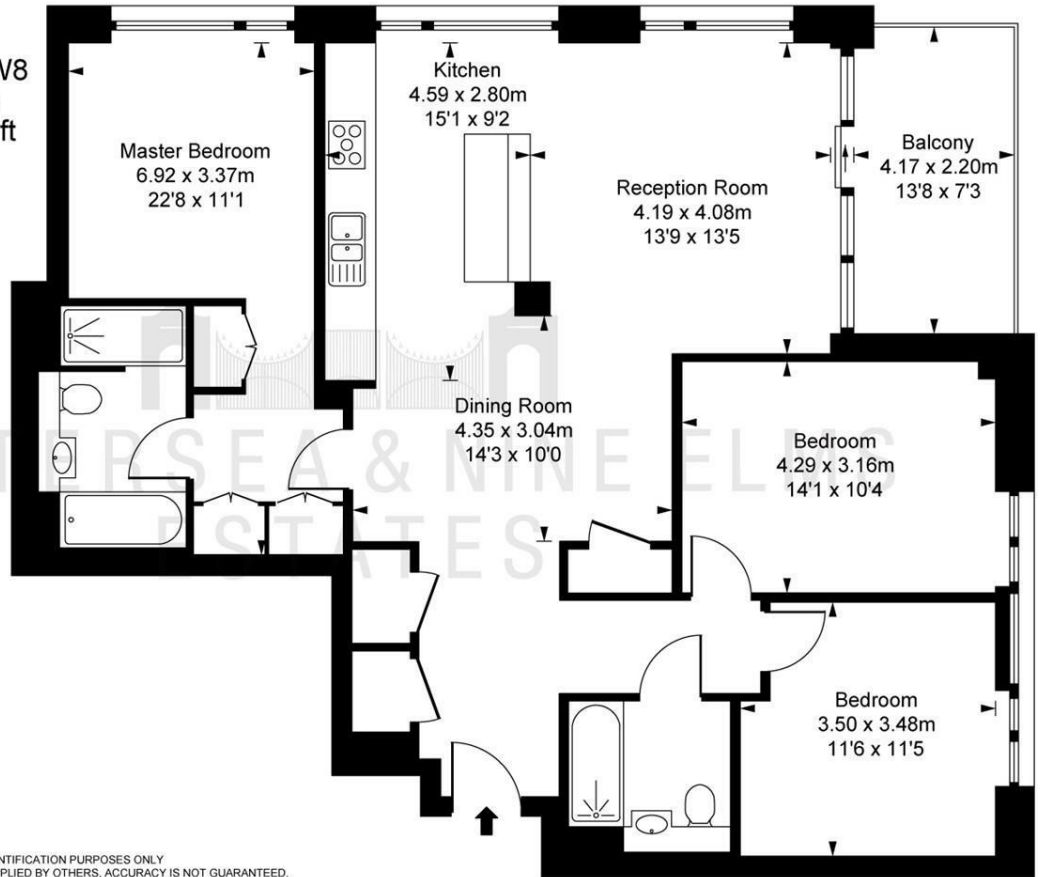


ILLUSTRATION FOR IDENTIFICATION PURPOSES ONLY.
ALL MEASUREMENTS AND AREA FIGURES SUPPLIED BY OTHERS. ACCURACY IS NOT GUARANTEED.
THIS PLAN MUST NOT BE REPRODUCED BY ANY OTHER PERSON WITHOUT PERMISSION

These particulars, whilst believed to be accurate are set out as a general outline only for guidance and do not constitute any part of an offer or contract. Intending purchasers should not rely on them as statements of representation of fact, but must satisfy themselves by inspection or otherwise as to their accuracy. No person in this firm's employment has the authority to make or give any representation or warranty in respect of the property.

