

Fenwicks estate agents are delighted to offer for sale a detached bungalow situated in a small cul de sac, within a sought after location – no onward chain.

The Accommodation Comprises

UPVC double glazed side glass panels and front door to:

Entrance Hall

Coved ceiling, storage cupboard housing combination boiler, access to loft space, thermostat to wall, radiator.

Lounge/Dining

UPVC double glazed window to front elevation, coved ceiling, gas feature fire place with tiled surround, space for dining table and chairs, hatch to kitchen, double and single radiators, glazed double doors to conservatory.

Kitchen

UPVC double glazed windows to rear elevation, UPVC double glazed patio door leading to conservatory, coved ceilings, kitchen is fitted with a range of base units with matching eye level units with undercounter lighting, stainless steel sink with drainer and mixer tap, integrated oven, gas hob with extractor hood over, integrated fridge, integrated freezer, space and plumbing for dishwasher, tiling to walls, plinth radiator.

Conservatory

UPVC double glazed windows, UPVC double glazed double doors and further single door to garden, polycarbonate roof, plumbing and space for washing machine.

Bedroom One

UPVC double glazed window to rear elevation, radiator.

Bedroom Two

UPVC double glazed window to front elevation, radiator.

Bathroom

Two obscured UPVC double glazed window to rear elevation, Close coupled WC, wash hand basin set in vanity unit, bath with shower over, glass shower screen, ladder style radiator.

Garage

Up and over door, light and power connected, courtesy side door. Agents Note: there is potential to convert to a third bedroom subject to the necessary permissions.

Outside

To the front of the property is a driveway for off-roading parking leading to the garage, side access to the rear garden, lawned area with mature hedges and shrubs, The rear garden is enclosed by wood panel fencing and mature hedges, primarily laid to lawn with patio area, shrubs and bushes to borders, summer house.

General Information

Construction - Traditional

Water Supply – Portsmouth Water

Electric Supply – Mains

Gas Supply - Mains

Sewerage - Mains

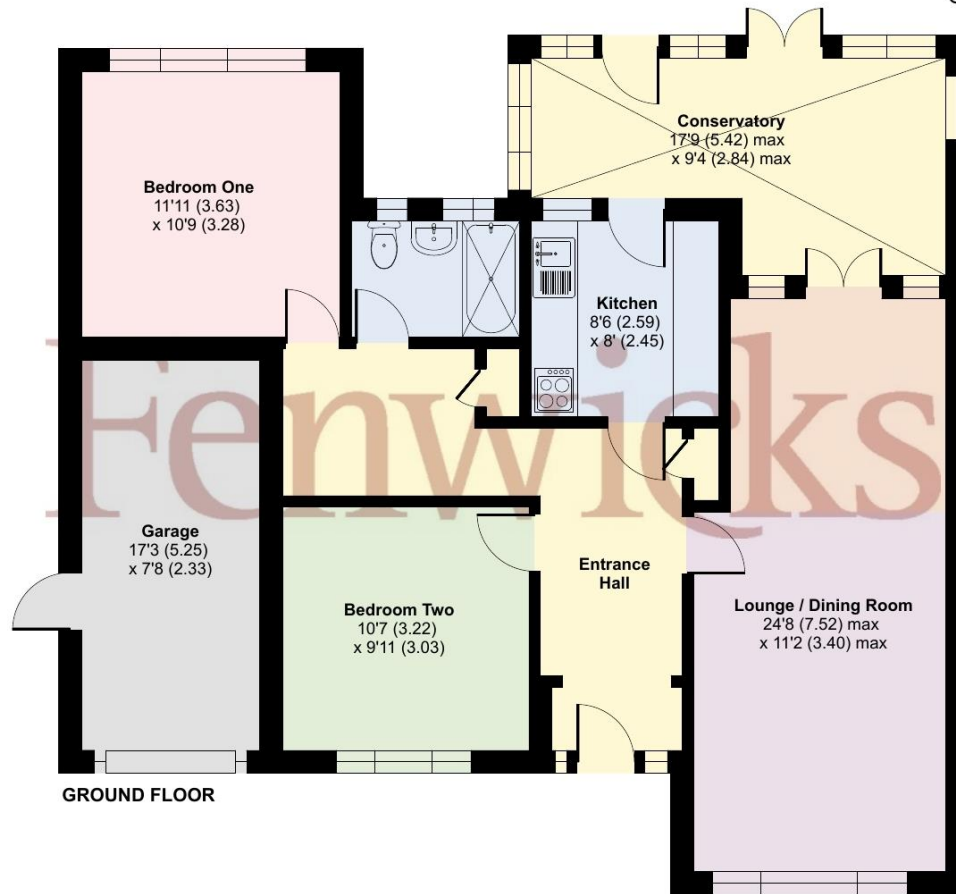
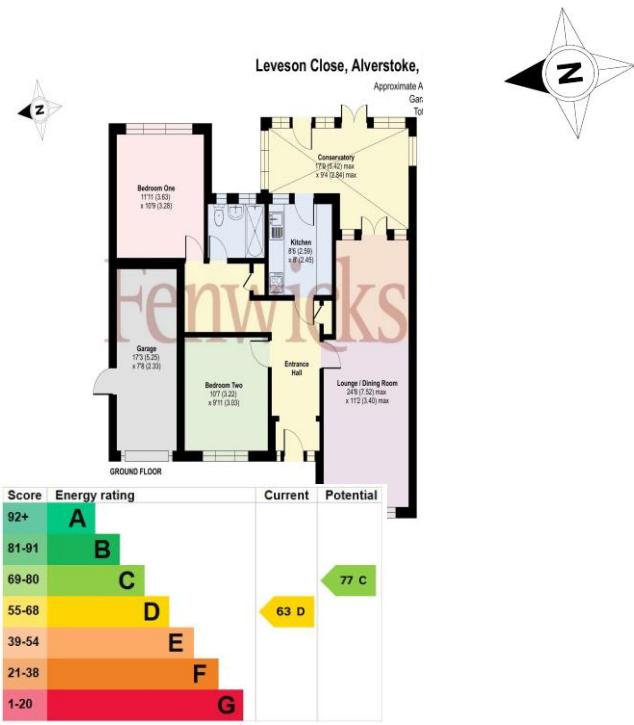
Mobile & Broadband coverage: <https://checker.ofcom.org.uk/>

Flood risk: www.gov.uk/check-long-term-flood-risk



Leveson Close, Alverstoke, Gosport, PO12

Approximate Area = 941 sq ft / 87.4 sq m
 Garage = 128 sq ft / 11.8 sq m
 Total = 1069 sq ft / 99.2 sq m
 For identification only - Not to scale



Tenure: Freehold

Council Tax Band: E

Floor plan produced in accordance with RICS Property Measurement 2nd Edition, Incorporating International Property Measurement Standards (IPMS2 Residential). © nichecom 2026. Produced for Fenwicks Estates (Lee & Gosport) Limited. REF: 1466467

Disclaimer: These particulars are set out as a general outline in accordance with the Consumer Protection from Unfair Trading Regulations 2008 (CPR's) and Business Protection from Misleading Marketing Regulations 2008 (BPR's) only for the guidance of intending purchasers or lessees, and do not constitute any part of an offer or contract. Details are given without any responsibility, and any intending purchasers, lessees or third parties should not rely on them as statements or representations of fact, but must satisfy themselves by inspection or otherwise as to the correctness of each of them.

We have not carried out a structural survey and the services, appliances and specific fittings have not been tested. All photographs, measurements, floor plans and distances referred to are given as a guide only and should not be relied upon for the purchase of carpets or any other fixtures or fittings. Gardens, roof terraces, balconies and communal gardens as well as tenure and lease details cannot have their accuracy guaranteed for intending purchasers. Lease details, service ground rent (where applicable) are given as a guide only and should be checked and confirmed by your solicitor prior to exchange of contracts.

No person in the employment of Fenwicks Estates Ltd has any authority to make any representation or warranty whatever in relation to this property. Purchase prices, rents or other prices quoted are correct at the date of publication and, unless otherwise stated, exclusive of VAT.

Data Protection: We retain the copyright in all advertising material used to market this Property.

Money Laundering Regulations 2017: Intending purchasers will be required to produce identification documentation once an offer is accepted.



£475,000

Leveson Close, Alverstoke, Gosport, PO12 2QJ

DRAFT DETAILS

Fenwicks - Gosport Office: 02392 529889 www.fenwicks-estates.co.uk

Fenwicks

THE INDEPENDENT ESTATE AGENT