



Park Drive

Ingatestone, CM4 9DT

This three-bedroom home presents the latest opportunity to buy a much sought-after, double-fronted property in the centre of Ingatestone village, offering excellent potential to extend, STPP. Council Tax band: E

Tenure: Freehold

EPC Energy Efficiency Rating:

EPC Environmental Impact Rating:

- Highly sought-after, double-fronted house type
- Superb potential to extend, subject to consents
- Spacious, south west facing garden
- Off-road parking
- Modern shower room with walk-in shower
- Bright interiors with large windows and natural light
- Excellent central village location





Park Drive

Ingatestone, CM4 9DT

This well-presented, three-bedroom home presents the latest opportunity to buy a much sought-after, double-fronted property in the centre of Ingatestone village, offering excellent potential to extend, subject to the usual consents.

Upon entry, you are greeted by a bright and welcoming hallway. The ground floor comprises two well-proportioned reception rooms: a cosy living area with a feature fireplace, and a charming dining area with a large window that fills the room with light. The kitchen is thoughtfully designed with classic wooden cabinetry, integrated appliances, and a breakfast area, all complemented by a large window overlooking the rear garden.

Upstairs, the landing benefits from further natural light and practical built-in storage, leading to three generous bedrooms, each finished with neutral decor and large windows to ensure excellent natural light. The contemporary family shower room boasts a walk-in shower and modern fixtures.

Externally, the property offers a neatly maintained front garden with a spacious driveway and off-road parking space for multiple vehicles. The south west facing rear garden is a true highlight, offering a generous lawn bordered by mature trees and shrubs for privacy, and a paved patio area. A garage also provides valuable additional storage.



• Highly sought-after, double-fronted house



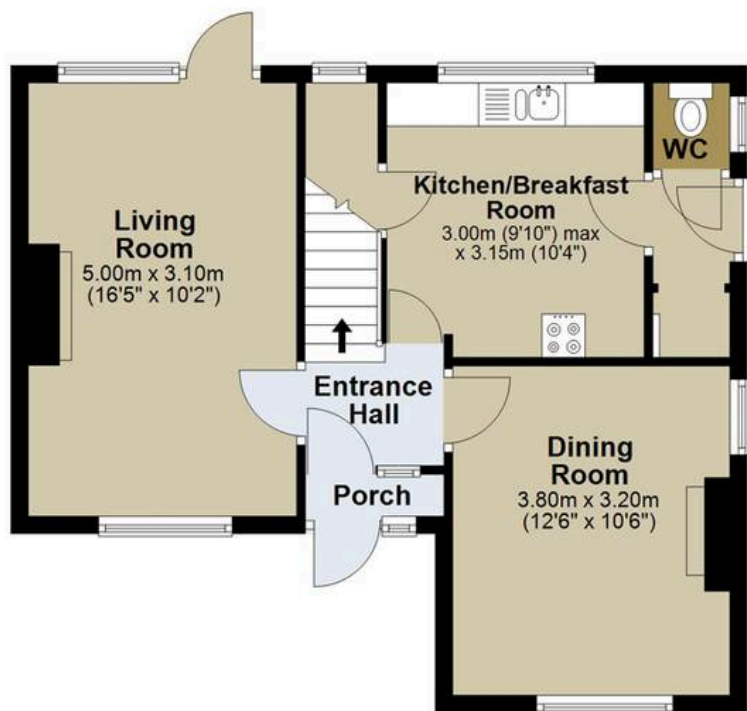






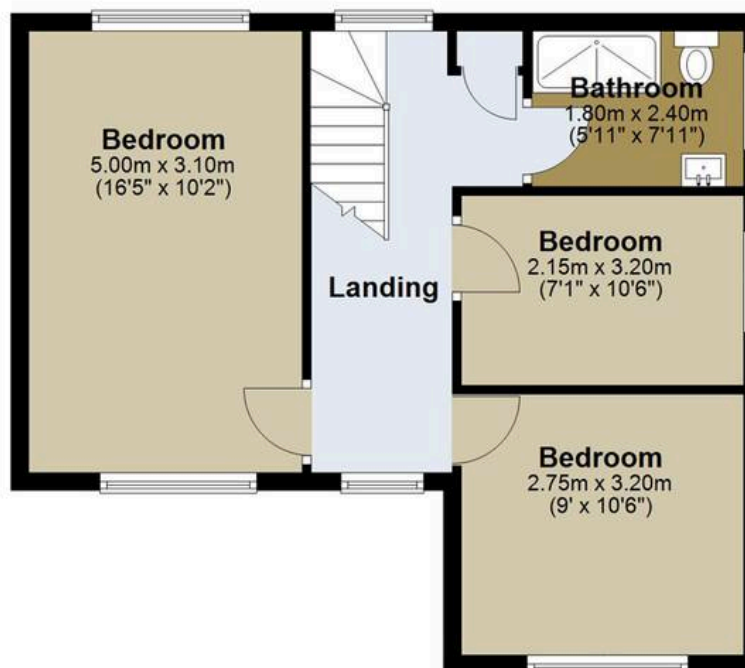
Ground Floor

Approx. 47.5 sq. metres (511.0 sq. feet)



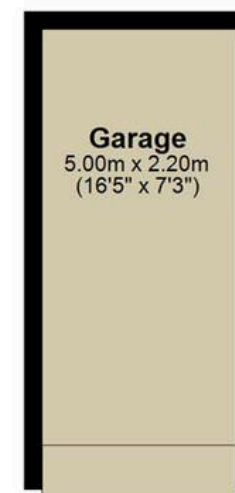
First Floor

Approx. 46.5 sq. metres (501.0 sq. feet)



Outbuilding

Approx. 11.0 sq. metres (118.4 sq. feet)



About Us

Walkers | People & Property is built on a lifelong family passion for homes. Martin, Gillian and Adam Walker lead a respected, professional team who live and breathe all aspects of property. With over 30 years of experience, we understand the moving process on a personal level and are committed to delivering exceptional results. Most of all, helping people move is our hobby, and handing over the keys to excited buyers remains our favourite moment.

Get In Touch



Browse Properties



Contact Us
01277 355005



Our Website
www.walkersstates.co.uk



Our Address
90 High Street
Ingatstone
CM14 9DW



www.walkersstates.co.uk

Walkers
People & Property

Psst... Have you heard of
Walkers discreet marketing?

Many people lose out on their dream home to someone in a better position. Often, it is because they have delayed putting their house on the market, preferring to find somewhere first and then sell.

That is why we have innovated a totally unique and highly confidential moving home solution to put you in a competitive position. Let us find you a buyer **without any advertising or pressure** and without the neighbours knowing.

Your secret is safe with us....

Get in touch for a **complimentary** valuation. Looking To Sell Or Let Your Home?

Book your free valuation to see how much your home is worth.