



Craven Hill Gardens, W2

£799,000

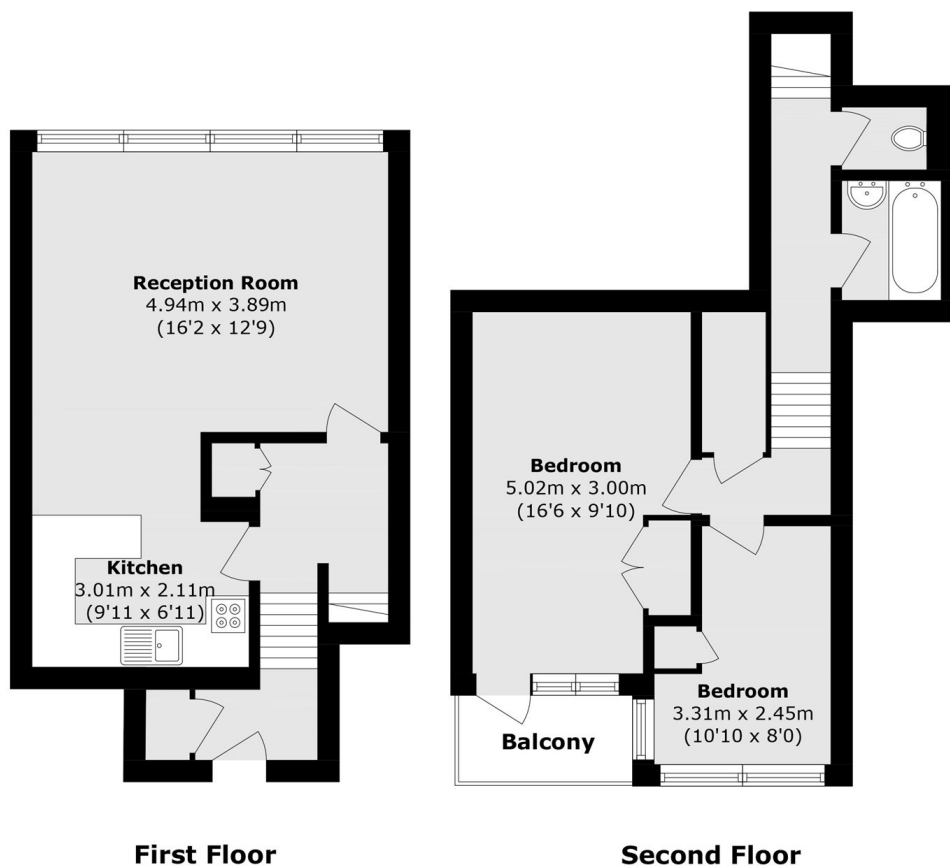
A two double bedroom, split level apartment on the first floor of a purpose built block, with a lift and private communal gardens. The property has an open plan kitchen/reception, built-in storage, a good size family bathroom and direct access to a balcony from the principal bedroom. A new lease with 125 years unexpired will be granted for the sale.

Craven Hill Gardens is a short walk away from Lancaster Gate and Paddington overground/underground stations, including all the amenities of Queensway, 'The Whiteley' regeneration, as well as the green space of Hyde Park.

Features

- Two Bedrooms
- Split Level
- Lift and Porter
- Private Communal Garden
- Balcony
- Hyde Park

Craven Hill Gardens, London, W2



Total area (approx): 73.1 sq. m (786.8 sq. ft)
Balcony area (approx): 2.8 sq. m (30.1 sq. ft)