



**CAMBRIDGE STREET**  
PIMLICO

**JACKSON-STOPS** 

## CAMBRIDGE STREET PIMLICO, SW1V

ASKING PRICE: £1,500,000

A rare opportunity to acquire a three-bedroom maisonette arranged over the first and second floors, ideally located within the ever-popular Pimlico Grid, SW1.

Extending to approximately 1,230 sq ft, the property offers well-balanced and versatile accommodation. The first floor features a separate, well-appointed kitchen alongside an elegant double reception room, providing ample space for both formal dining and a comfortable sitting area. Floor-to-ceiling sash windows open onto a charming 'portico' balcony.

The upper levels comprise three bedrooms and two bathrooms, arranged across the mezzanine and second floor, making the apartment equally suited to family life and hosting guests.

Additionally, there is the increasingly rare potential (subject to the necessary consents) to extend further by adding a third-floor mansard and/or roof terrace.

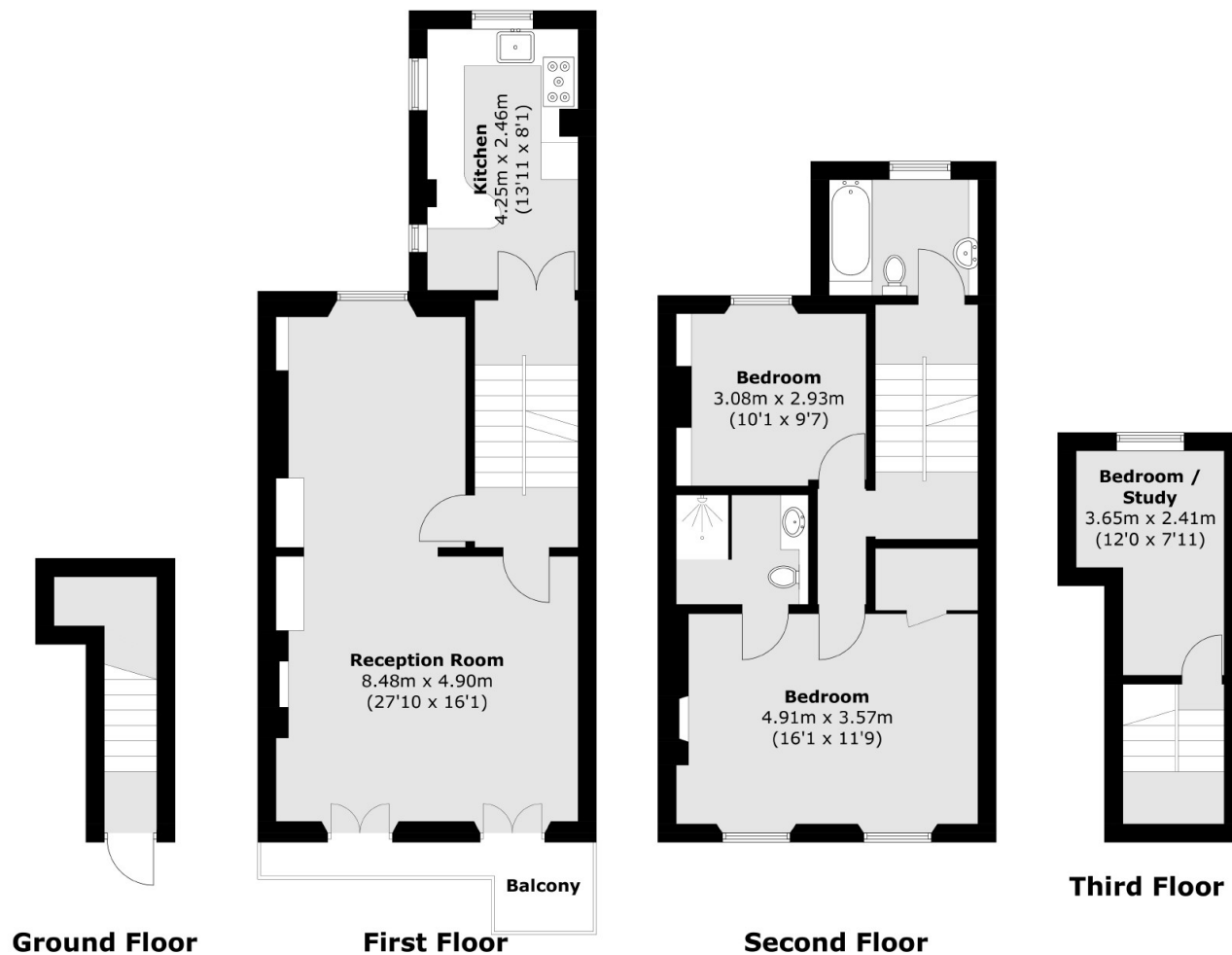
This property would suit a wide range of purchasers, including those seeking a family home, a sizeable pied-à-terre, or a well-located downsizing opportunity in Prime Central London. It is conveniently positioned for an excellent selection of local amenities, transport links, as well as Battersea Park and Battersea Power Station.

### KEY FEATURES

- Share of Freehold
- Maisonette
- Three Bedrooms
- Portico Balcony (undemised)
- Service Charge: £3726.5pa







**Ground Floor**

**First Floor**

**Second Floor**

**Third Floor**

Total area (approx.): 114.7 sq. m (1,234.6 sq. ft)  
 Balcony (approx.): 4.4 sq. m (47.4 sq. ft)

Energy Rating: D. We aim to make our particulars both accurate and reliable. However they are not guaranteed; nor do they form part of an offer or contract. If you require clarification on any points then please contact us, especially if you are travelling some distance to view. Please note that appliances and heating systems have not been tested and therefore no warranties can be given as to their good working order.

**ASKING PRICE: £1,500,000**

**PIMLICO**

**020 7828 4050**

pimlicosales@jackson-stops.com

jackson-stops.co.uk

**JACKSON-STOPS** 