

# Frank Harris & Co.



## Rashleigh House, WC1H

£450,000

Offers in excess of: Rashleigh House is a redbrick building set towards the north of Bloomsbury. This one bedroom flat just shy of 500 sq.ft has been refurbished to a modern finish and comprises of a fully fitted kitchen, a bathroom and a spacious living space.



Rashleigh House is located on Thanet Street, Kings Cross, St Pancras International, Euston and Euston Square stations are a short walk away. Rashleigh House is also located in a great location easily accessible to London's top universities

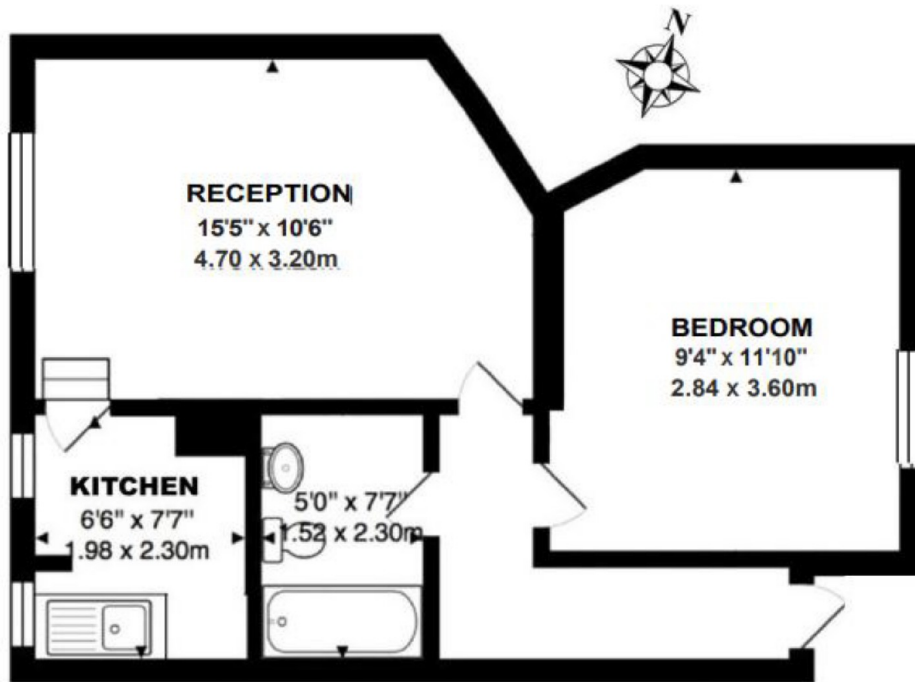
- Share Of The Freehold • Second Floor • Period Mansion Block •
- Long Lease • Central Location • No Chain •







# Frank Harris & Co.



**Total Area Approximately 46 Sq M/495 Sq Ft**

Whilst every attempt has been made to ensure the accuracy of the floor plan contained here, measurements of doors, windows, rooms and any other items are approximate and no responsibility is taken for any error, omission, or mis-statement. This plan is for illustrative purposes only and should be used as such by any prospective purchaser. The services, systems and appliances shown have not been tested and no guarantee as to their operability or efficiency can be given

Frank Harris & Co. Bloomsbury and Kings Cross  
81 Marchmont Street,  
London, WC1N 1AL  
020 7405 4444  
bloomsburysales@frankharris.co.uk

Energy Rating: . We aim to make our particulars both accurate and reliable. However they are not guaranteed; nor do they form part of an offer or contract. If you require clarification on any points then please contact us, especially if you're traveling some distance to view. Please note that appliances and heating systems have not been tested and therefore no warranties can be given as to their good working order.

