



**Guide Price**  
**£650,000**

**Freehold**

4x  2x  2x 

**Carmans Close, Loose,  
Maidstone, Kent, ME15**

**OVER 60?**

Secure this property  
for up to **59% less!**

*Wards*  
Helping you move forwards



## Main features

- Beautifully presented family home, tucked away in a quiet location
- Generous size, sunny rear garden, complete with summer house
- Useful study, ideal for those who work from home
- Spacious size rooms throughout
- Popular location, with sought after schools in walking distance

## Accommodation

### GROUND FLOOR

- Entrance Hall
- Downstairs Cloakroom: 7'1 x 3'0 (2.16m x 0.92m)
- Lounge: 20'1 x 11'1 (6.13m x 3.38m)
- Dining Room: 11'1 x 11'0 (3.38m x 3.36m)
- Study: 7'1 x 7'1 (2.16m x 2.16m)
- Kitchen/Breakfast Room: 14'1 x 13'0 (4.30m x 3.97m)
- Utility Room: 7'1 x 5'1 (2.16m x 1.55m)

### FIRST FLOOR

- Landing
- Bedroom 1: 19'0 x 11'1 (5.80m x 3.38m)
- En Suite Shower Room: 7'1 x 4'0 (2.16m x 1.22m)
- Bedroom 2: 13'1 x 11'0 (3.99m x 3.36m)
- Bedroom 3: 11'0 x 9'0 (3.36m x 2.75m)
- Bedroom 4: 11'0 x 8'1 (3.36m x 2.47m)
- Bathroom: 7'0 x 5'1 (2.14m x 1.55m)

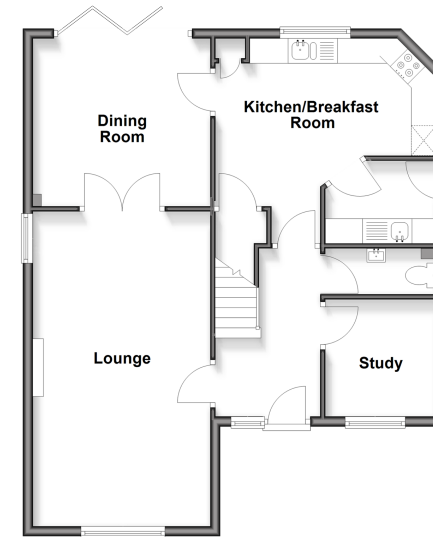
### OUTBUILDING

- Double Garage

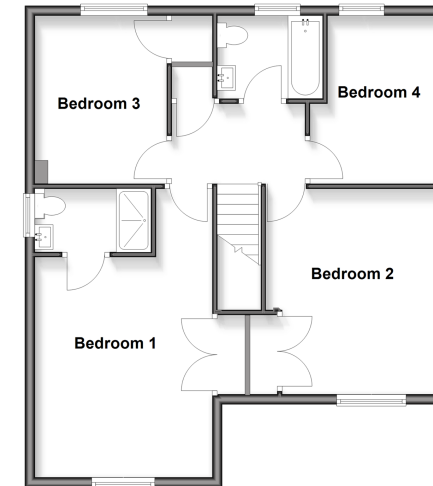
### OUTSIDE

- Front and Rear Gardens
- Summer House
- Driveway

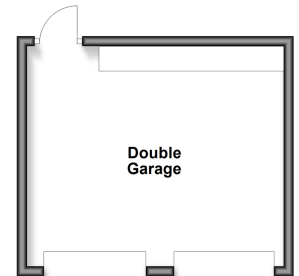
**Ground Floor**  
Approx. 69.8 sq. metres (751.4 sq. feet)



**First Floor**  
Approx. 66.4 sq. metres (735.6 sq. feet)



**Outbuilding**  
Approx. 23.0 sq. metres (248.0 sq. feet)



**Call Loose - 01622 744067 ■ [wardsof Kent.co.uk](http://wardsof Kent.co.uk)**

- Legal advice should be taken to verify fixtures/fittings, planning, alterations and/or lease details
- Appliances & services are untested, dimensions are approximate and floor plans are not to scale
- Through a Homewise Home For Life Plan people aged 60+ can secure this property for up to 59% less, by purchasing a Lifetime Lease



13021688/20260304/KIR/VMK