



St. Johns Road, TW7

£400,000

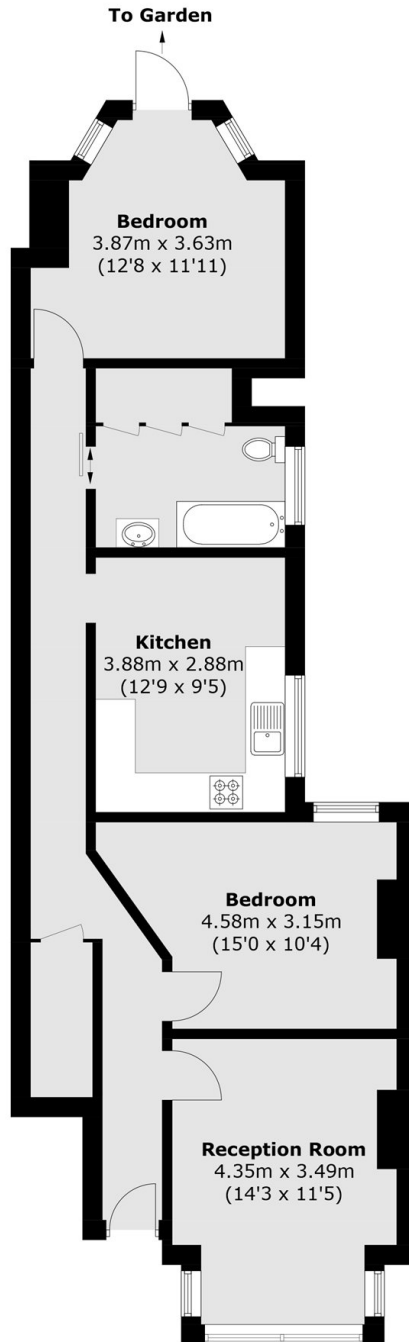
A well looked after two double bedroom ground floor maisonette. The property benefits include a front garden, ample internal storage, lots of period features, no service charge and a large private garden. Residents permit parking is available.

St Johns Road is superbly positioned in the heart of Isleworth close to Isleworth train station, local parks and amenities. St. Margarets and Richmond are a pleasant walk away or short bus journey.

Features

- No Service Charge
- Private Garden
- Period Maisonette
- Close to Amenities
- Close to Train Station
- On Road Parking

St. Johns Road, Isleworth, TW7



Total area (approx.): 74.7 sq. m (804.1 sq. ft)