



## THE PAPERWORKS, SW12

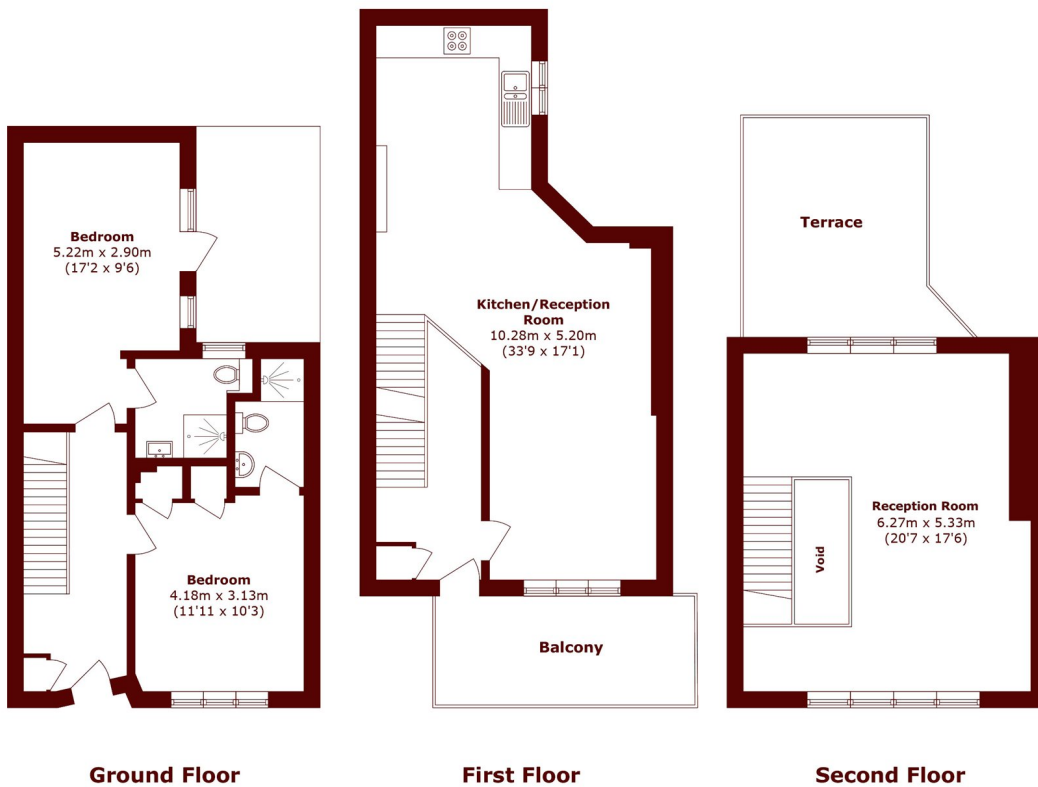
£3,800 per month

Immaculately presented two-bedroom house finished to a high standard, offering excellent natural light, high ceilings and wooden floors, with two en suites, private terraces and generous living space.

Two double bedrooms  
Two terraces  
High ceilings

Wooden flooring  
Nightingale Triangle  
Energy rating: d.

# STEP INSIDE THE PAPERWORKS



Total area (approx.): 118.7 sq. m (1277.6 sq. ft)  
(Excluding Void)  
Balcony area (approx.): 9.7 sq m (104.4 sq. ft)  
Terrace area (approx.): 14.2 sq. m (152.8 sq. ft)

Balham & Clapham South  
020 8772 9200

Energy Rating: D We aim to make our particulars both accurate and reliable. However, they are not guaranteed; nor do they form part of an offer or contract. If you require clarification on any points then please contact us, especially if you're traveling some distance to view. Please note that appliances and heating systems have not been tested and therefore no warranties can be given as to their good working order

MARSH &  
PARSONS