



The Sycamores | Lichfield | WS14 9ES

£850 PCM

 **Webbs**
estate agents

Summary

Webbs Estate Agents are pleased to present this newly decorated one bedroom mid terraced house to rent in the desirable Sycamores development. Located just a five minute drive from Lichfield town centre and close to Lichfield city train station.

In brief the property comprises of living room, kitchen. Upstairs a double bedroom and bathroom. Externally there is off road parking for one vehicle.

Early viewing is highly recommended.

Key Features

Rooms and Dimensions

PROPERTY DETAILS

Living Room

15'0" x 8'10" (4.58 x 2.71)

Kitchen

9'7" x 5'1" (2.93 x 1.56)

Bedroom

15'1" x 10'10" (4.61 x 3.32)

Bathroom

4'10" x 8'4" (1.49 x 2.55)

TENANCY INFORMATION & IMPORTANT NOTES





Webbs
estate agents



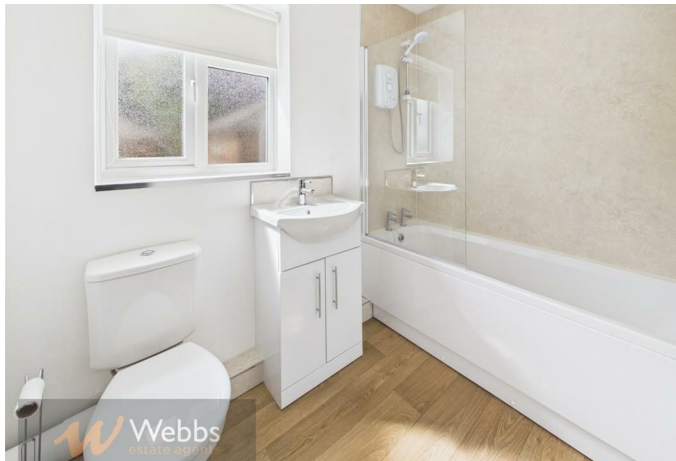
Webbs
estate agents



Webbs
estate agents



Webbs
estate agents



Webbs
estate agents



Webbs
estate agents

