



Prince Regent Road, TW3

£255,000

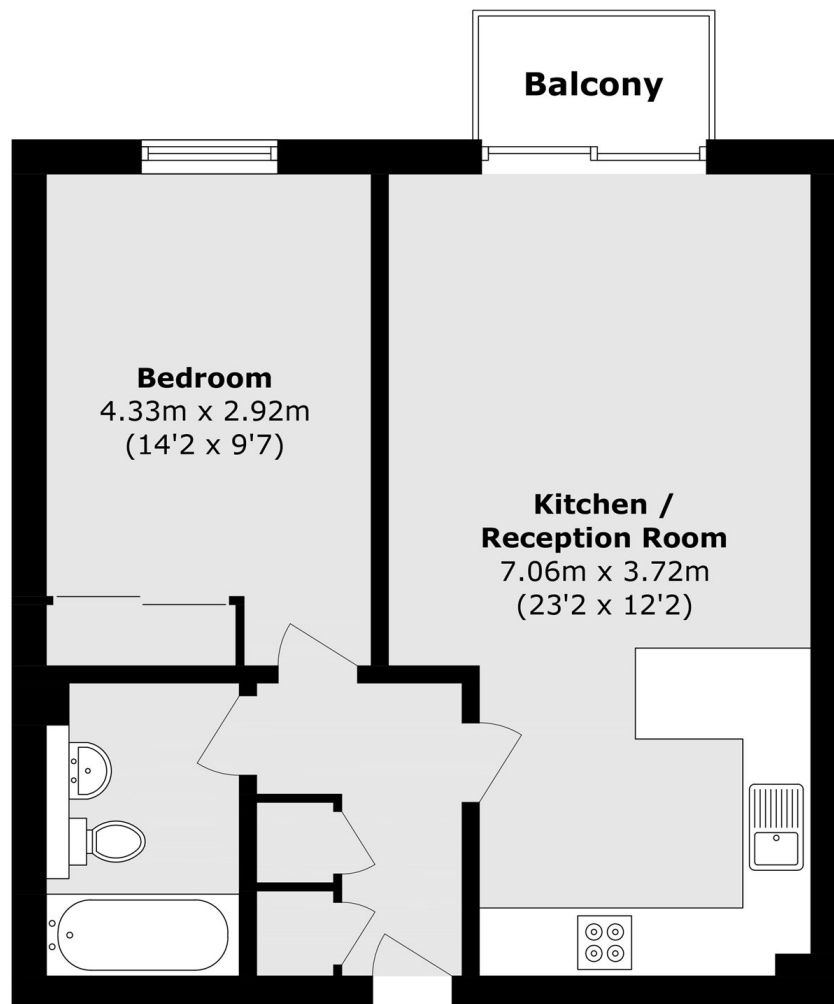
We are delighted to bring to the market this one double bedroom apartment positioned on the 6th floor of this popular and centrally located development. Benefits include a long lease, lift service and private balcony with stunning views.

Baroque Court is a popular and sought after development situated in the heart of Hounslow and located moments away from the High Street, local amenities and both Hounslow East and Hounslow Central Station (Piccadilly Line).

Features

- One Double Bedroom
- Long Lease
- Excellent Condition
- Balcony
- Stunning Skyline Views
- Central Location

Prince Regent Road, Hounslow, TW3



Total area (approx.): 47.5 sq. m (511.2 sq. ft)

Balcony area (approx.): 2.4 sq. m (25.8 sq. ft)