



North End Road, NW11

£1,250,000

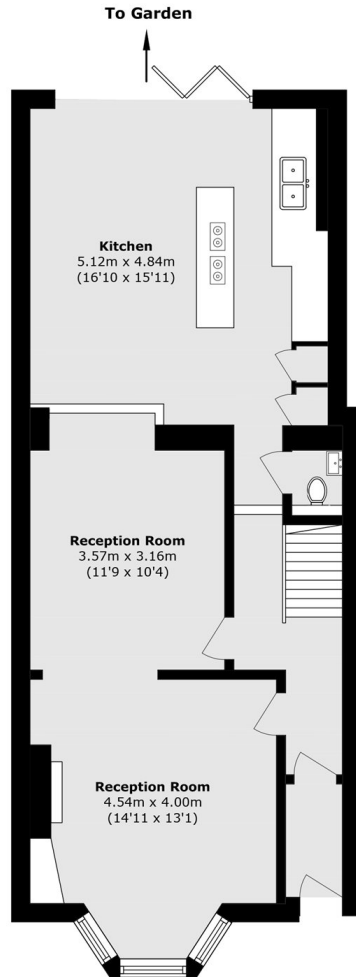
A chain free freehold house of approximately 1,650 sq ft arranged over three floors, offering excellent family accommodation. The property features a double reception room, four bedrooms, two bathrooms, a guest WC, and a private garden.

North End Road is a sought after residential address in the heart of Hampstead Garden Suburb. The area offers a peaceful village atmosphere while being close to the shops, cafés, and amenities of Temple Fortune. Excellent transport links are available via Golders Green Underground Station (Northern Line) and nearby bus routes.

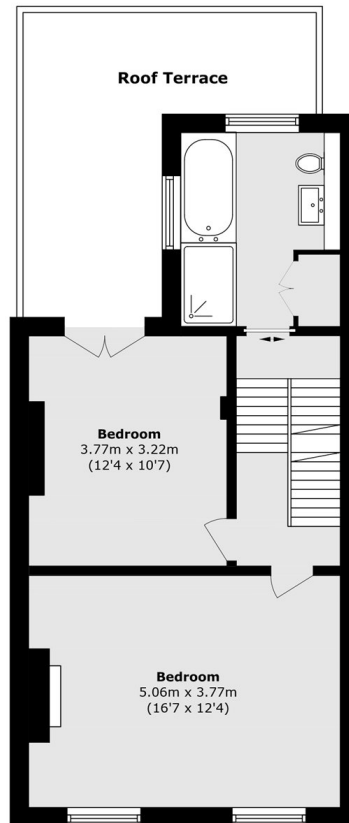
Features

- Four Bedrooms
- Approximately 1650 Sq.Ft
- Chain Free
- Two Bathrooms
- Private Garden
- Opposite Golders Hill Park

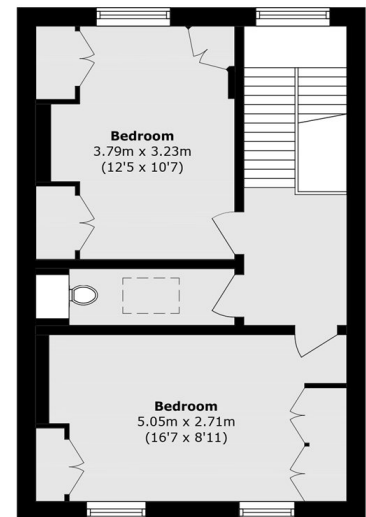
North End Road, London, NW11



Ground Floor



First Floor



Second Floor

Total area (approx.): 151.9 sq. m (1635.0 sq. ft)

Roof Terrace area (approx.): 15.3 sq. m (164.6 sq. ft)