



Hazelmere, Hambleton Way, Winsford CW7 1TN

Guide price £100,000

 2
  1
  1
  B



Hazelmere

Hambleton Way, Winsford, CW7 1TN

Guide price £100,000



Communal Areas

The apartment available is located on the second floor with lovely views over the fields at the front, two bedrooms, a full wet room, kitchen, lounge and a lovely balcony. White washed walls throughout, with an automatic door with fob which majority of these apartments don't have so a fantastic extra.

On-site facilities include: Extra Care scheme with on-site care staff (24 hours / 7 days)

Careline alarm service, Wheelchair accessible, Lifts, Cats and dogs generally accepted

They have many activities and performances (entertainment acts) with a monthly calendar of events.

Other Facilities include:

Sensory room, Spa, Beautify Salon/Hairdressers, Village Hall, Restaurant with indoor and outdoor seating, Library, Launderette, Jacuzzi baths (one on each floor), Fitness Centre (gym), Craft room, Assisted bathing facilities, Guest bedroom and facilities, Communal gardens, Winter Garden, Conservatory, Shop

Well tendered communal gardens for all residents.

Hallway

12'5" x 9'2" (3.791m x 2.810m)

Lounge With Balcony

16'0" x 12'5" (4.902m x 3.793m)

Kitchen

14'1" x 12'4" (4.308m x 3.762m)

Master Bedroom

14'1" x 11'8" (4.310m x 3.580m)

Bedroom Two

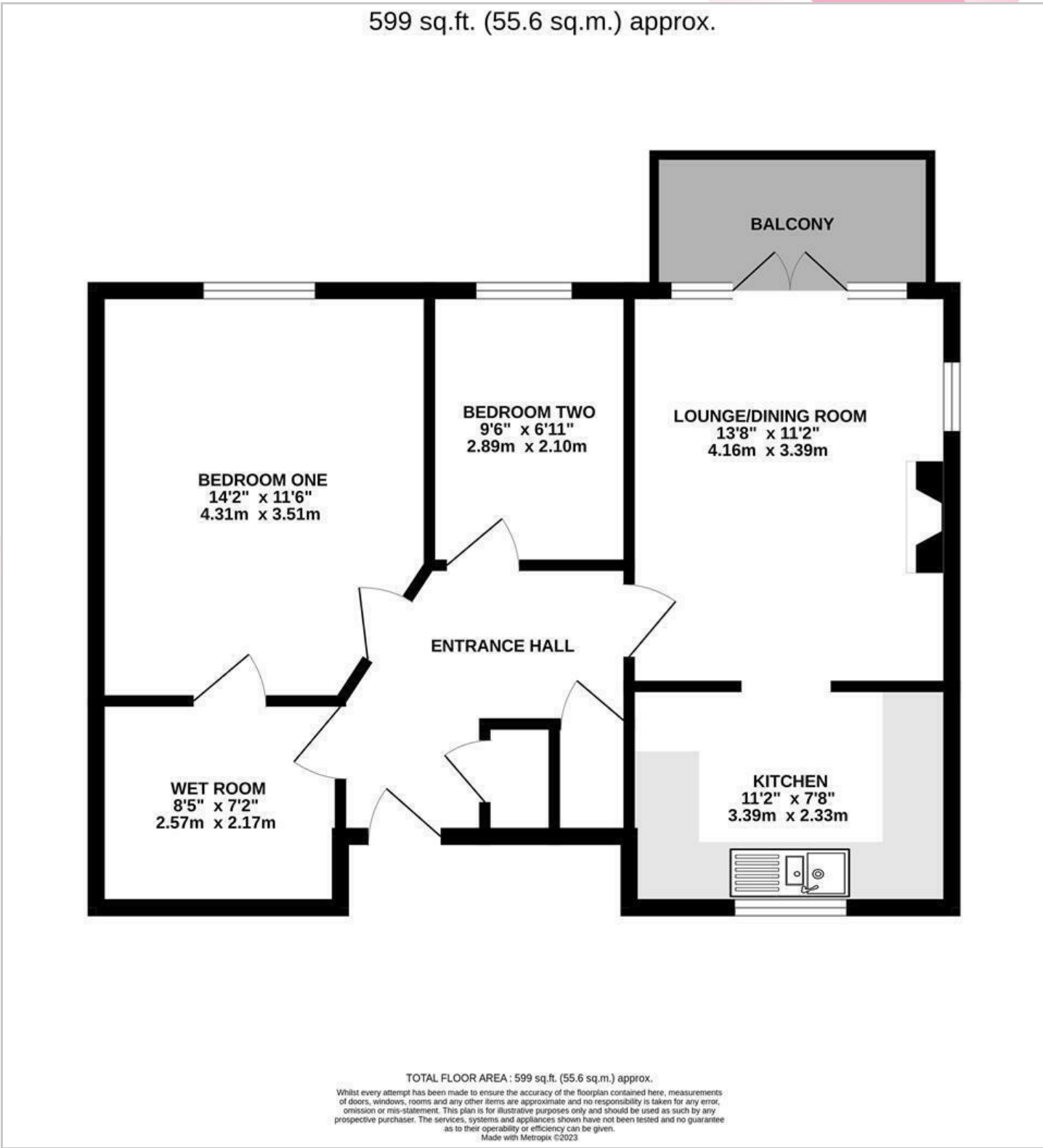
11'0" x 9'2" (3.096m x 2.816m)

Wet Room

Externally



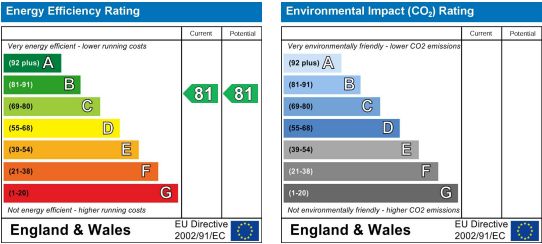
Floor Plan



Viewing

Please contact us on 01606 514 152 if you wish to arrange a viewing appointment for this property or require further information.

Energy Efficiency Graph



These particulars, whilst believed to be accurate are set out as a general outline only for guidance and do not constitute any part of an offer or contract. Intending purchasers should not rely on them as statements of representation of fact, but must satisfy themselves by inspection or otherwise as to their accuracy. No person in this firm's employment has the authority to make or give any representation or warranty in respect of the property.