



Craddocks Parade, Ashtead

Craddocks Parade

Ashtead

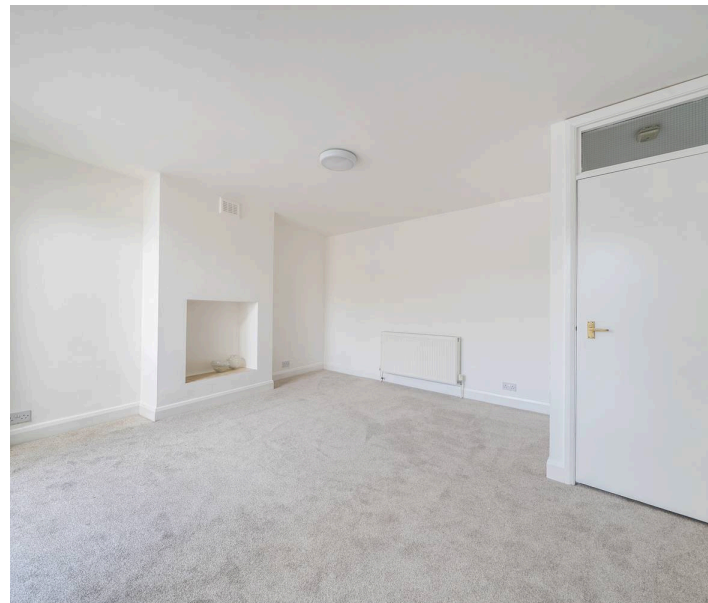
Council Tax band: B

Tenure: Leasehold

EPC Energy Efficiency Rating: C

EPC Environmental Impact Rating: C

- Two Bedrooms
- Recently Renovated
- New Lease
- First Floor Maisonette
- Own Front Door
- Close to Ashtead Station
- Over 620 sq ft
- Permit Parking Available





Craddocks Parade

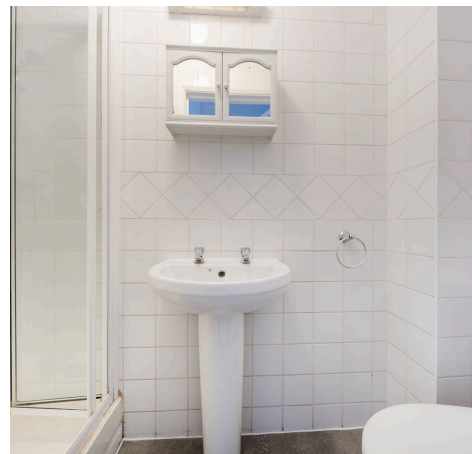
Ashtead

V&H Homes are delighted to present this beautifully redecorated two bedroom first floor apartment, ideally positioned within Craddocks Parade, Ashtead, offering a superb blend of modern styling and everyday convenience. The property has been thoughtfully refreshed throughout, creating a bright and welcoming interior ready for immediate occupation. At its heart is a generous living room, providing ample space for both relaxation and dining, with an abundance of natural light. The adjoining kitchen is neatly arranged and well-proportioned, offering practical workspace and storage.

There are two well-sized bedrooms, including a spacious principal bedroom and a versatile second bedroom, ideal for guests, a home office or nursery. A bathroom suite completes the accommodation.

Further benefits include a new lease to be granted, providing peace of mind for prospective purchasers, along with a highly convenient location above local amenities and within easy reach of Ashtead Village, excellent transport links and green open spaces.

An ideal purchase for first-time buyers, investors or those seeking a low-maintenance home in a sought-after village setting. Early viewing is highly recommended.



Craddocks Parade, Ashted, KT21

Approximate Area = 632 sq ft / 58.7 sq m

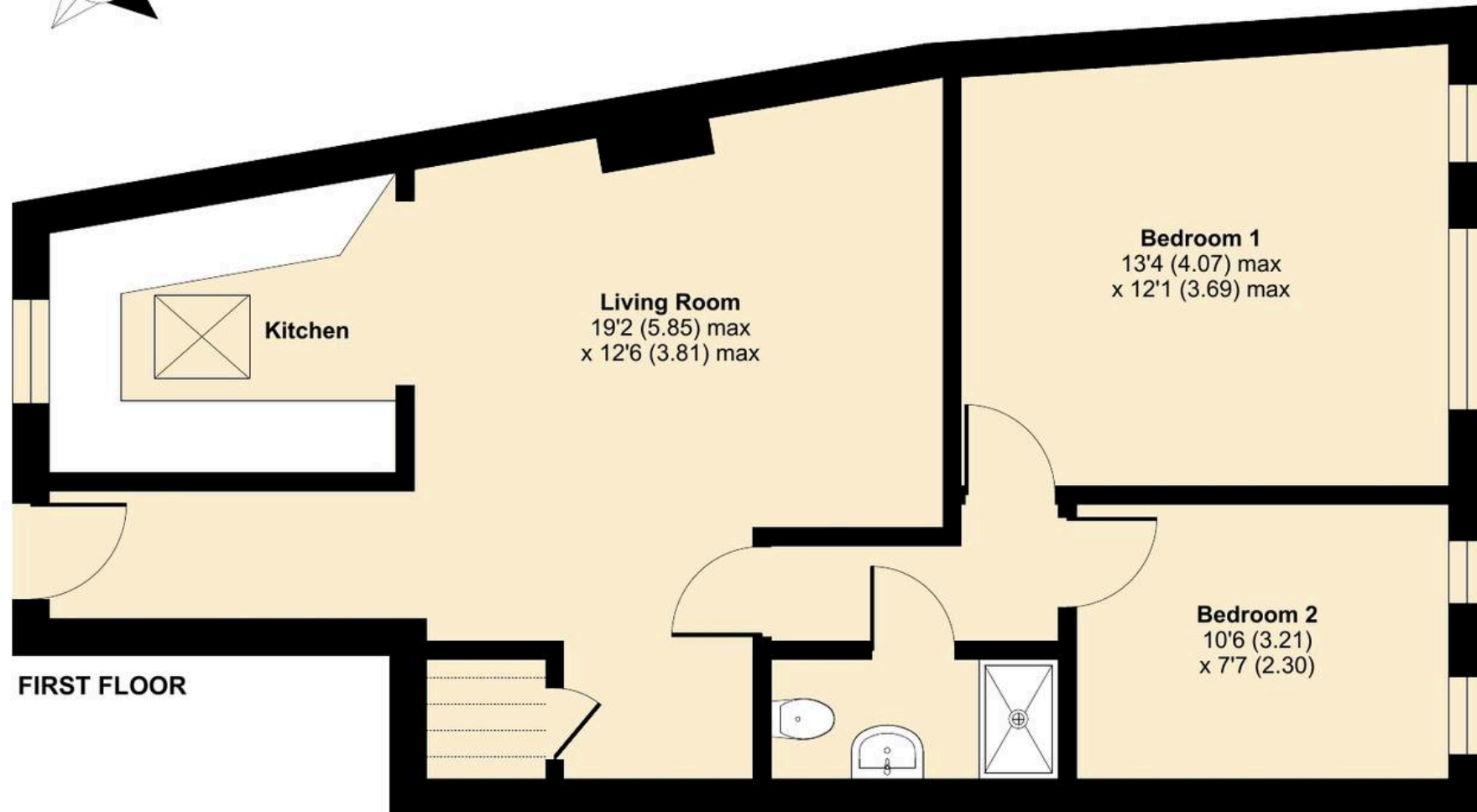
Limited Use Area(s) = 14 sq ft / 1.3 sq m

Total = 646 sq ft / 60 sq m

For identification only - Not to scale



Denotes restricted head height



Floor plan produced in accordance with RICS Property Measurement 2nd Edition, Incorporating International Property Measurement Standards (IPMS2 Residential). © nichecom 2026. Produced for V&H Homes. REF: 1441561

