



LADBROKE GROVE, W11

£3,500 per month

Offering a large, spacious reception room with adjoining kitchen, two double bedrooms and a bathroom. The property is offered on a furnished basis and has access to large communal gardens and Ladbroke Square.

Two Double bedrooms

Beautiful Reception Room

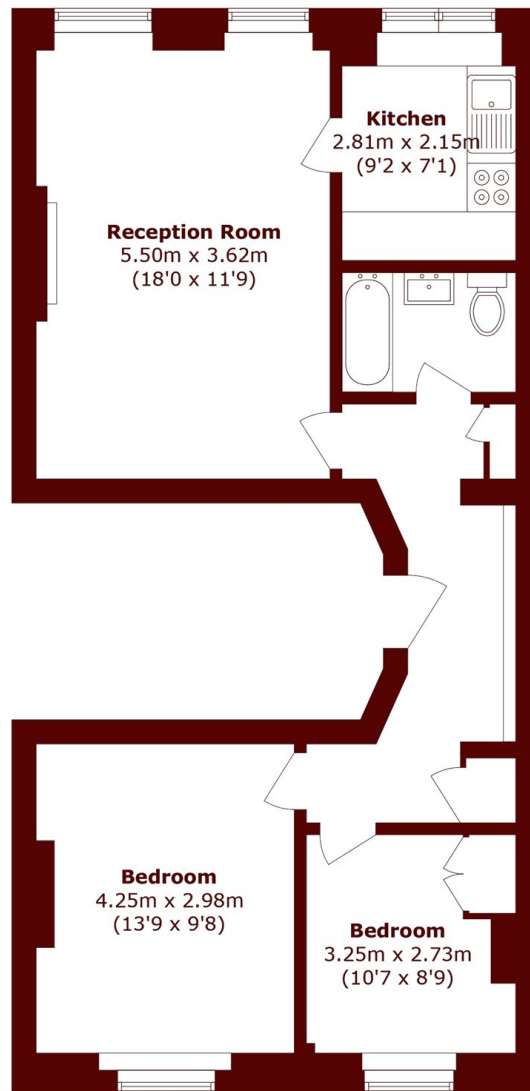
Access to Communal Gardens

Second Floor

Period Property

Sought After Location

STEP INSIDE LADBROKE GROVE



Total area (approx.): 60.9 sq. m (655.5 sq. ft)

Holland Park
020 7605 6895

Energy Rating: D We aim to make our particulars both accurate and reliable. However, they are not guaranteed; nor do they form part of an offer or contract. If you require clarification on any points then please contact us, especially if you're traveling some distance to view. Please note that appliances and heating systems have not been tested and therefore no warranties can be given as to their good working order

MARSH &
PARSONS