



## Kings Avenue, SW4

£2,400 Per calendar month

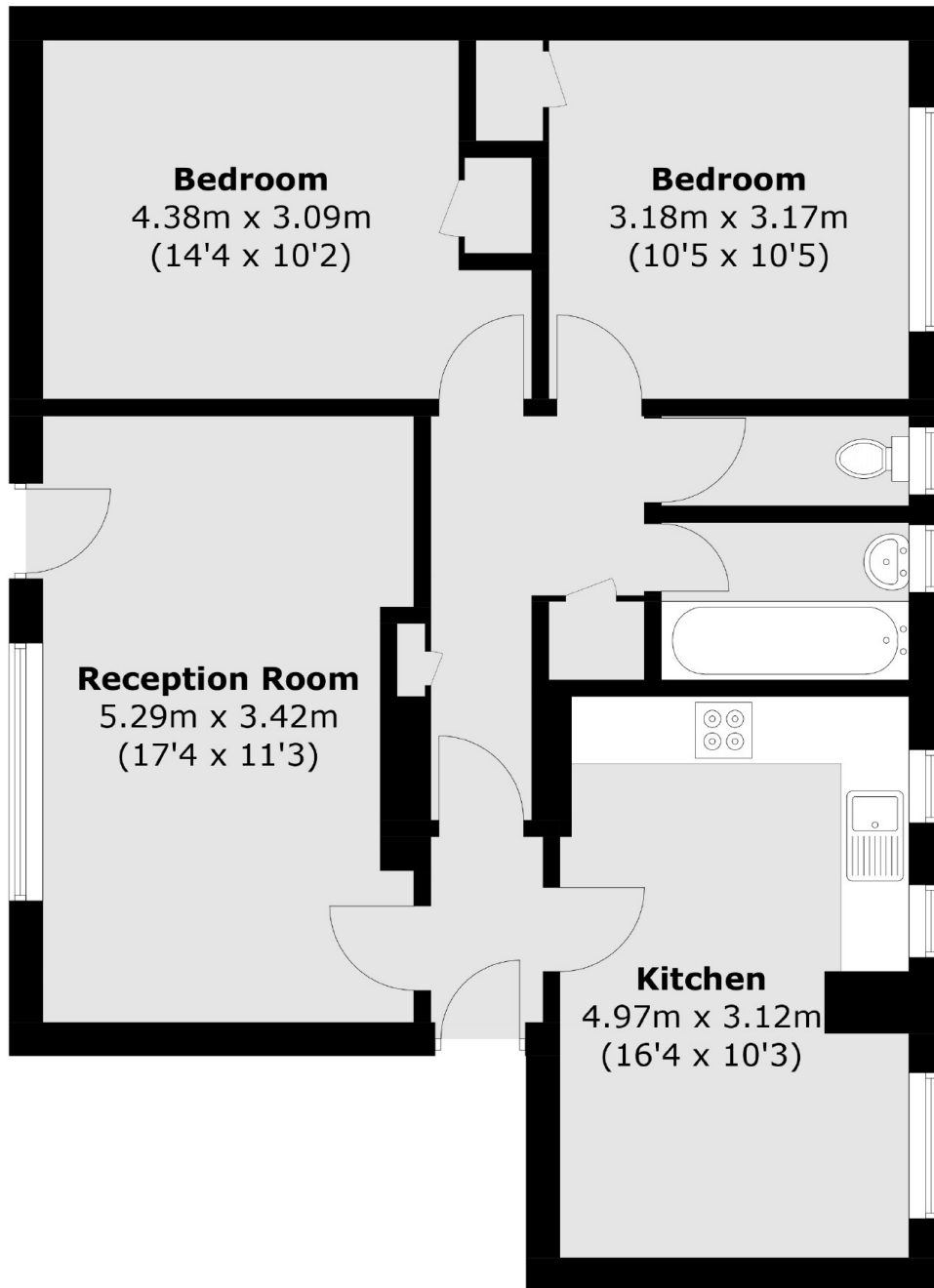
This two bedroom apartment is situated on the third floor of purpose-built development. The property extends to a generous 797 sq. ft and comprises a 17 ft reception room and a Juliet balcony that overlooks the large communal garden.

Situated on Kings Avenue, conveniently located for access to Clapham High Street, Abbeville Village and Brixton, nearby transport links include Clapham Common and Brixton underground.

### Features

- Two Double Bedrooms
- Spacious Reception Room
- Eat-In Kitchen
- Communal Gardens
- Juliet Balcony
- Nearby Transport Links

Kings Avenue,  
London, SW4



Total area (approx.): 74.1 sq. m (797.6 sq. ft)