



## 3sfsg Elmdon Road, Selly Oak, Birmingham, B29 7LP £144 Per Week



2026/2027 ACADEMIC YEAR - 1 BEDROOM IN AN 8 BEDROOM HOUSE SHARE - £144.47 PPPW ALL BILLS INCLUDED (Internet, Water, Gas, Electricity & Communal Cleaning)

Stunning House Share - Selly Oak

Looking for modern, spacious, and secure accommodation for the 2026/2027 academic year? This exceptional 1 bedroom in an 8 bedroom house share in the heart of Selly Oak is perfect for University of Birmingham students or professionals seeking comfort, style, and convenience.

Prime Location  
Just a 10-minute walk to the South Gate of the University of Birmingham and close to all local amenities.

Low Deposit: £400 per person

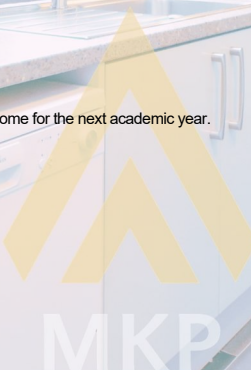
Property Features:  
Newly refurbished to a high standard  
Spacious interior with no single rooms - all bedrooms generously sized  
Modern kitchen and communal living areas  
Central heating & double glazing  
Security alarm system (fitted in all MKP Management properties)  
Large rear garden  
Front drive with convenient off-road parking

This property offers the perfect balance of comfort, security, and location — making it an ideal home for the next academic year.

Viewings by appointment only with MKP Management.  
Secure your 2026/2027 home in Selly Oak today!

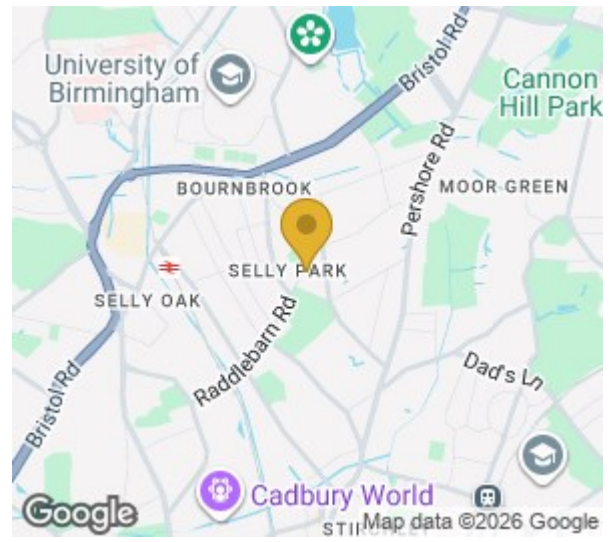
### Viewing

Please contact our MKP MANAGEMENT Office on 0121 472 5897 if you wish to arrange a viewing appointment for this property or require further information.

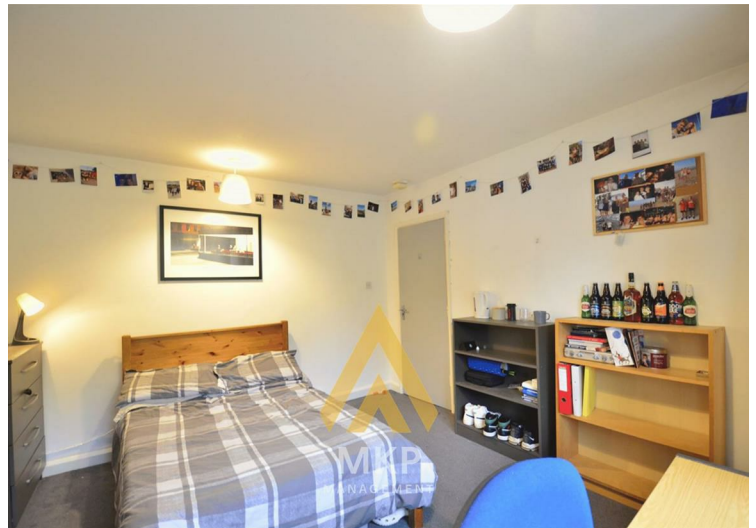




43 Elmdon Road, Birmingham



| Energy Efficiency Rating                    |                         | Environmental Impact (CO <sub>2</sub> ) Rating |                                                                 |
|---------------------------------------------|-------------------------|------------------------------------------------|-----------------------------------------------------------------|
| Very energy efficient - lower running costs | Current                 | Potential                                      | Very environmentally friendly - lower CO <sub>2</sub> emissions |
| (92 plus) A                                 |                         |                                                | (82 plus) A                                                     |
| (81-91) B                                   |                         |                                                | (81-91) B                                                       |
| (69-80) C                                   |                         |                                                | (69-80) C                                                       |
| (55-68) D                                   |                         |                                                | (55-68) D                                                       |
| (39-54) E                                   |                         |                                                | (39-54) E                                                       |
| (21-38) F                                   |                         |                                                | (21-38) F                                                       |
| (1-20) G                                    |                         |                                                | (1-20) G                                                        |
| Not energy efficient - higher running costs |                         |                                                | Not environmentally friendly - higher CO <sub>2</sub> emissions |
|                                             | 64                      | 73                                             | 54                                                              |
| <b>England &amp; Wales</b>                  | EU Directive 2002/91/EC |                                                | <b>England &amp; Wales</b>                                      |
|                                             | EU Directive 2002/91/EC |                                                |                                                                 |



These particulars, whilst believed to be accurate are set out as a general outline only for guidance and do not constitute any part of an offer or contract. Intending purchasers should not rely on them as statements of representation of fact, but must satisfy themselves by inspection or otherwise as to their accuracy. No person in this firm's employment has the authority to make or give any representation or warranty in respect of the property.