



Taylor's
Est. 1992

Main Street, Dunton Bassett, Lutterworth, LE17 5JH
Lutterworth

Offers in the Region of
£195,950

Set in the quietly picturesque village of Dunton Bassett, this enchanting one-bedroom cottage is a fine example of vernacular rural architecture, its whitewashed façade softened by areas of exposed brick and punctuated with elegant sash-style windows. It sits comfortably within its surroundings, offering a gentle introduction to village life.

The internal arrangement is both intuitive and carefully considered. The sitting room, positioned to the front, is an inviting space where a wood-burning stove forms a natural focal point, lending warmth and atmosphere. Light filters in through a generously sized window, illuminating a palette of simple, tactile materials. To the rear, the kitchen is composed of classic shaker cabinetry, timber worktops and a butler sink, its understated design both functional and enduring. Beyond lies a dining area, quietly oriented towards the courtyard garden.

Upstairs, the bedroom is calm and restorative in character, while the bathroom is notably spacious, appointed with a roll-top bath and timber flooring underfoot. Throughout, the house retains a gentle sense of its history, balanced by a freshness that makes it immediately liveable.

A walled courtyard garden extends from the rear of the plan, enclosed and private, with established planting that brings softness and seasonal variation. It is a quietly atmospheric space, well suited to both morning and evening use.

The cottage lies within easy walking distance of the village pub and surrounding countryside, with the nearby market town of Lutterworth a short drive away, along with convenient connections to the wider road network.

A rare and considered offering, this is a house of modest scale but enduring appeal—equally suited as a primary residence, a retreat from the city, or a carefully chosen first home.

Why Dunton Bassett?

Dunton Bassett is a picturesque south Leicestershire village, surrounded by open countryside and known for its peaceful, rural character. Its mix of period cottages and historic buildings creates a timeless setting, with a popular village pub and scenic walking routes close at hand.

Despite its tranquil feel, the village is well placed for access to Lutterworth and major road links, offering a





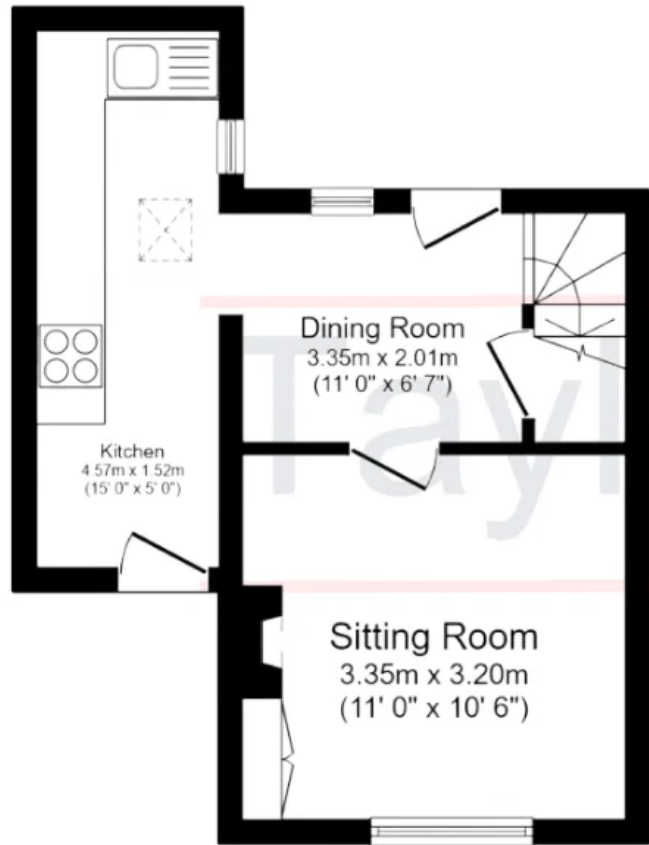
Beautiful cottage with NO CHAIN | Idyllic village location | Period features throughout | Ideal investment or first home | Available with no onward chain | Please get in touch to arrange your visit

- Charming Character Cottage in Sought-After Village Location
- One Double Bedroom – Ideal First-Time Buy or Weekend Retreat
- Cosy Living Room with Feature Wood-Burning Stove
- Private Walled Courtyard
- Stylish Shaker Kitchen with Butler Sink & Wooden Worktops
- Separate Dining Area Overlooking Courtyard Garden
- Spacious Bathroom with Roll-Top Bath
- Private Walled Courtyard Garden – Low Maintenance
- Beautiful Period Features Throughout
- No Chain

Tenure: Freehold

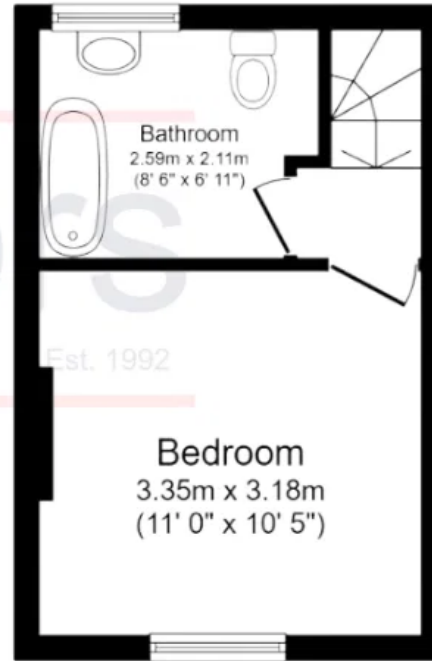
Property Type: Cottage





Ground Floor

Floor area 25.9 sq.m. (279 sq.ft.)



First Floor

Floor area 17.8 sq.m. (191 sq.ft.)



Taylor's Estate Agency

4 Woodgate Rothley Leicester, Rothley Leicester, Leicester

0116 326 6464

hello@taylorsestate.agency

https://taylorsestate.agency/