

Bacton Street, Bethnal Green E2

London

£1,800 pcm



## Bacton Street, Bethnal Green E2

One bedroom top floor apartment located in the exciting and vibrant hub of Globe Town, close to Bethnal Green underground station and Victoria Park.

- One Bedroom Flat
- Top Floor
- Globe Town Location
- Bright and Spacious
- Close to Bethnal Green Tube Station
- Victoria Park Nearby
- Part Furnished
- Available from 18th July 2026



One bedroom top floor flat located in the exciting and vibrant hub of Globe Town, close to Bethnal Green underground station and Victoria Park.

Comprising of a bright and spacious reception, separate fitted kitchen, double bedroom with built-in storage and a bathroom, this fourth floor flat is set within a secure development with a lift.

The amenities of trendy Globe Town and Roman Road are on your doorstep, with Bethnal Green underground station and Victoria Park, featuring a popular Sunday food market, only a short distance away. Stepney Green underground station is also nearby and the area is very well served by bus routes into Shoreditch and the City.

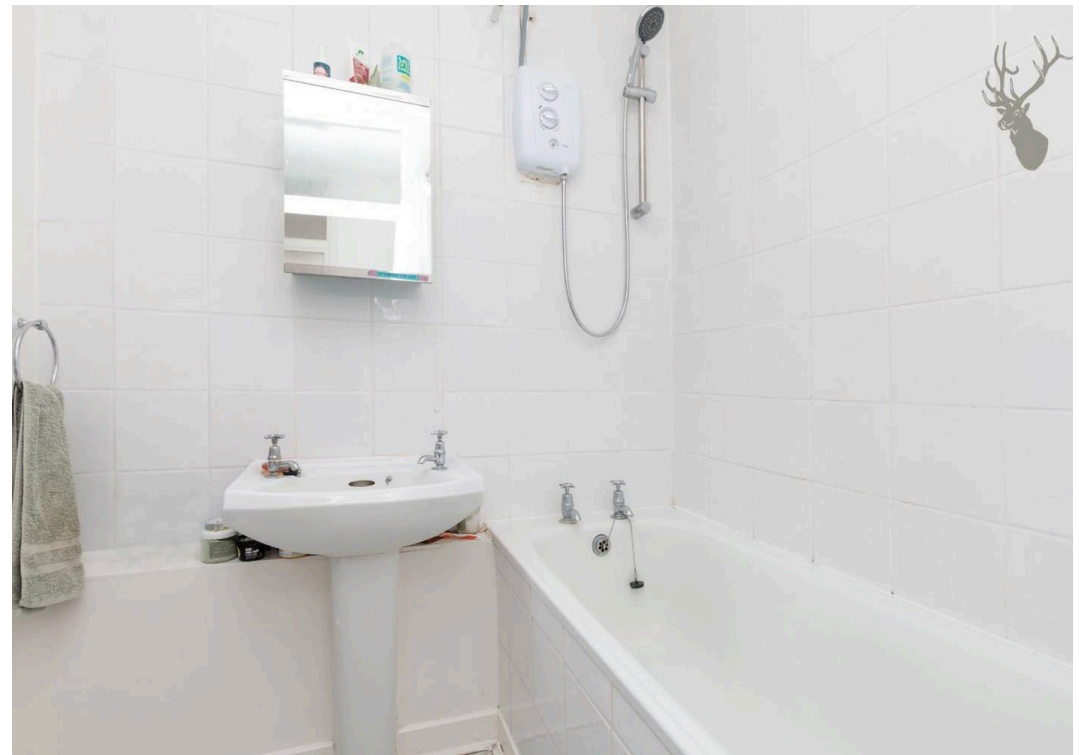
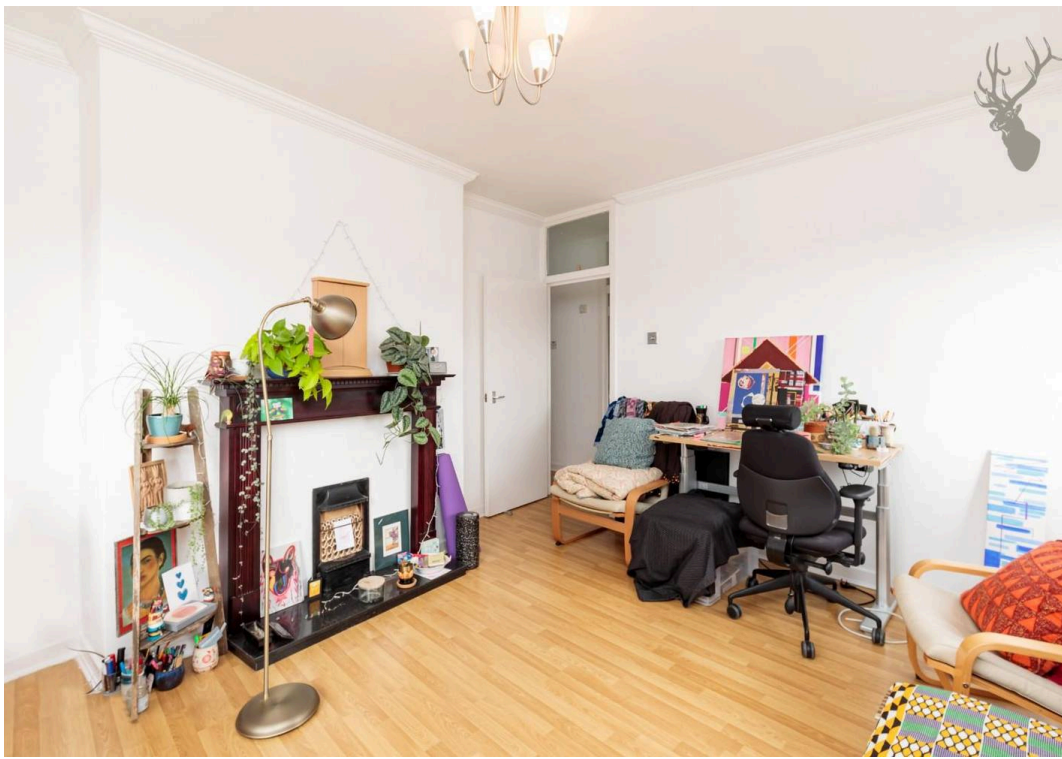
Perfect for a single professional or couple, this property is offered part furnished and is available from 18th July 2026.

Council Tax band: B

EPC Energy Efficiency Rating: D

EPC Environmental Impact Rating: D

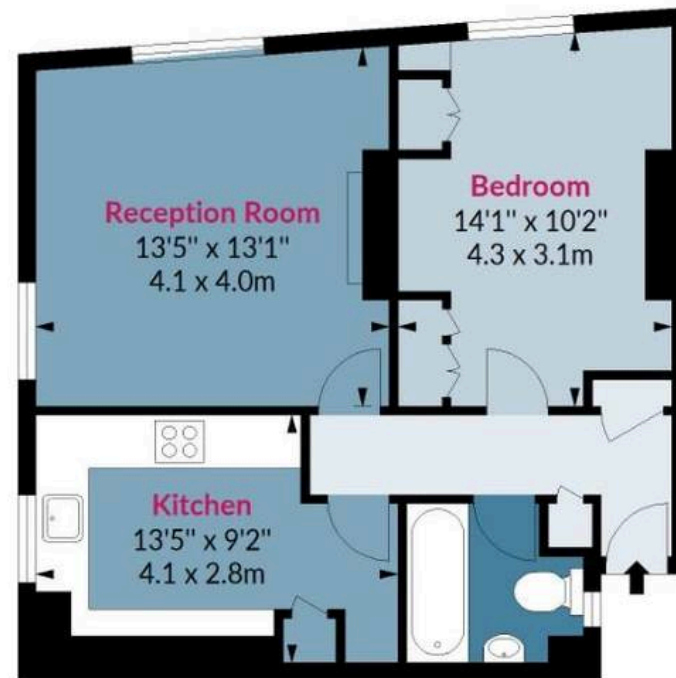






# Butler House, E2

Approx. Gross Internal Area 513 Sq Ft - 47.66 Sq M



## Fourth Floor

Floor Area 513 Sq Ft - 47.66 Sq M



Measured according to RICS IPMS2. Floor plan is for illustrative purposes only and is not to scale. Every attempt has been made to ensure the accuracy of the floor plan shown, however all measurements, fixtures, fittings and data shown are an approximate interpretation for illustrative purposes only. 1 sq m = 10.76 sq feet.

lpaplus.com

Date: 17/7/2023

# FROM EAST LONDON ENERGY TO WEST ESSEX EASE

## We Make Moving Home Easy.

At Butler and Stag, we do more than just connect London to West Essex – we make the move seamless. With offices spanning from vibrant East London to the tranquillity of West Essex, we understand the nuances of each area and the journey people take between them. Our marketing goes beyond standard listings, showcasing every property with precision, creativity, and reach that others simply can't match. Coupled with an unparalleled attention to detail, from first enquiry to final move-in, we ensure every client and customer feels informed, supported, and confident. Simply put, we do the little things that make a big difference, setting us apart in every step of the property experience.



LONDON   STRATFORD   SOUTH WOODFORD   BUCKHURST HILL   LOUGHTON   EPPING   BEYOND

# Like what you see? Let's talk

Book your **FREE** valuation now



020 8102 1236

[london@butlerandstag.com](mailto:london@butlerandstag.com)

508 Roman Road, Bow, London, E3 5LU

[butlerandstag.uk](http://butlerandstag.uk)

IMPORTANT NOTICE - These particulars have been prepared in good faith and they are not intended to constitute part of an offer or contract. We have not performed a structural survey on this property and the services, appliances and specific fittings have not been tested. All photographs, measurements, floor plans and distances referred to are given as a guide and should not be relied upon.

BUTLER & STAG

