

Bluebell

ESTATES



18, Medway Court, Aylesford, ME20 7QN
Offers In Excess Of £475,000

About this property.....

A truly stunning and versatile, chain free, 4/5 bedroom townhouse with beautiful river views, set in the heart of historic Aylesford village and perfectly positioned for excellent transport links.

This generously proportioned home offers an adaptable layout ideal for modern family living. The ground floor is designed for self-contained accommodation, featuring a living area with a fitted kitchen zone and an en-suite shower room, an ideal setup for multi-generational living, older relatives, or independent teenage/adult children.

The first floor boasts a light-filled living room with a balcony with useful awning, overlooking the river, creating a serene spot to unwind. A spacious kitchen-dining room, recently upgraded family bathroom, and an additional bedroom complete this level.

The top floor boasts the impressive principal suite, flooded with natural light and enjoying elevated river views. This luxurious space includes a generous en-suite and ample built in storage. A further two bedrooms are situated on this floor, one with another en-suite.

Outside, the property offers an enclosed, low maintenance rear garden, with a spiral staircase leading directly up to the balcony, a charming feature that enhances the indoor-outdoor flow. A garage and driveway for two cars provide excellent parking and storage options.

A rare opportunity in a sought-after riverside setting. This exceptional home must be viewed to be fully appreciated.

Situation.....

Aylesford village is a true gem that we can't help but adore! It exudes an incredible community spirit and boasts an array of historic properties and enticing dining spots. Our top pick is The Hengist with its fine dining and cocktails but we also have a soft spot for The Little Gem, a traditional alehouse dating back to the 1100s. There is also The Bush public house which serves food and The Chequers boasts a fantastic riverside courtyard garden. You'll have endless options for scenic strolls, with riverside walks, countryside hikes, and The Friars, an ancient religious house with a cafe, farmers market, and tranquil gardens right on the village's edge. Aylesford boasts a good rated primary school in the centre of the village and an outstanding rated primary just outside the village along with a secondary school in the wider Aylesford area. Shopaholics will relish the proximity of an M&S food store, Sainsbury's, and an Aldi just up the road. Commuters are well-catered too, with London-bound services (changing at Strood) from Aylesford station, while Ebbsfleet International is just 23 minutes away by car, with trains to London St. Pancras in a mere 19 minutes. Plus, both the M2 and M20 motorways are a stone's throw away. And if all that isn't enough, Maidstone's County Town is just 4 miles away, offering a plethora of retail, educational, and recreational facilities.











What the owner says.....

When I viewed this house I knew it was right for me and have loved living here. Relaxing on the balcony watching the boats go by and the abundance of wildlife we are so lucky to experience. The river looks different as it is often a high tide or low.

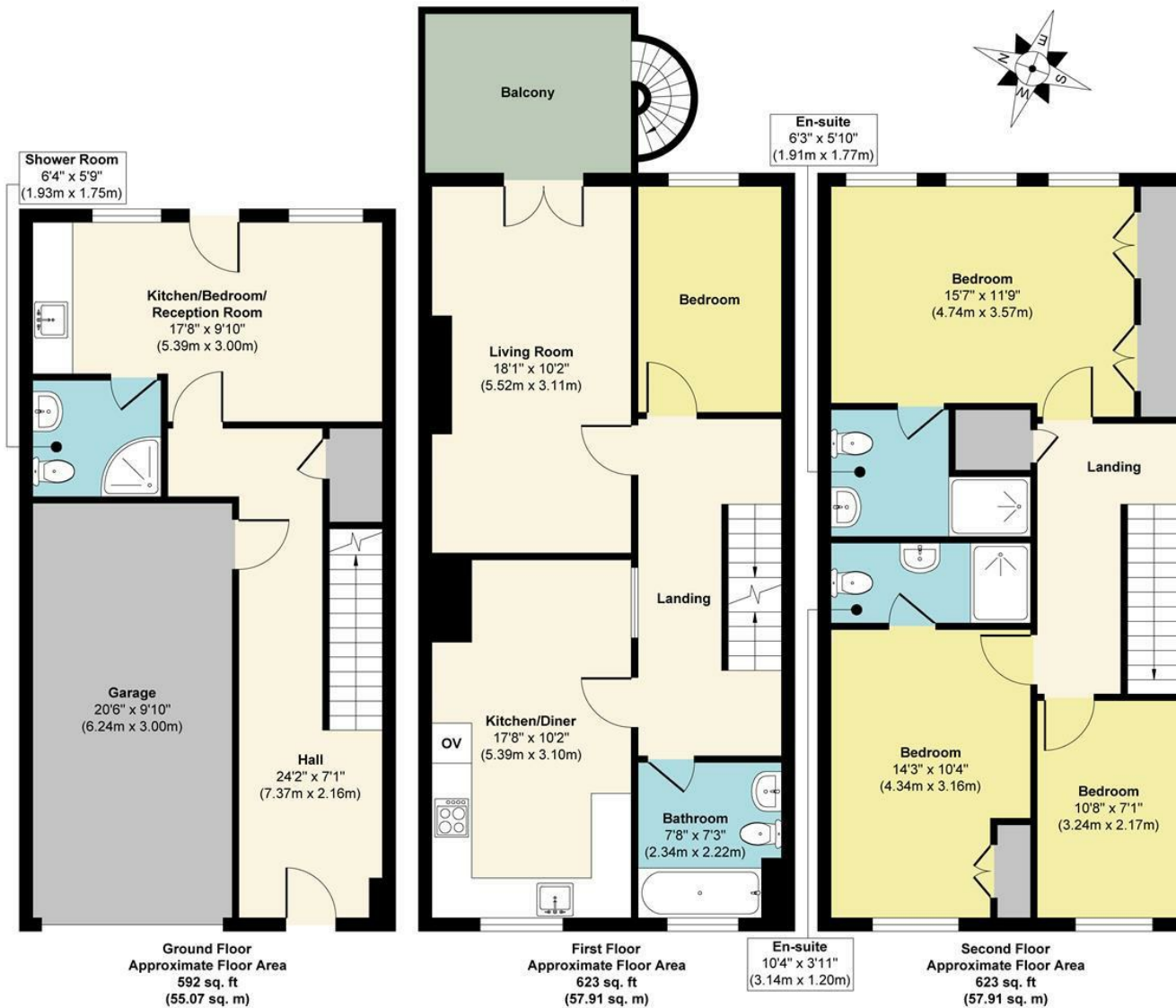
I am lucky to have lovely neighbours who I now call friends and will stay in touch with. Life has changed with my children moving to the South West and I want to be closer to them so a new adventure awaits but with the sadness of leaving my dream home.





18, Medway Court, Aylesford, ME20 7QN

18 Medway Court



Approx. Gross Internal Floor Area 1838 sq. ft / 170.89 sq. m

Illustration for identification purposes only, measurements are approximate, not to scale.

Produced by Elements Property

Agents Notes

Floor plans produced for illustrative purposes only. The position and sizes of doors, windows, rooms and other items are approximate and no responsibility is taken for any error, omission or mis-statement. These particulars are produced for information only and do not form part of any contract. The agent has not had sight of any title documents. Fixtures, fittings and services not tested.





