

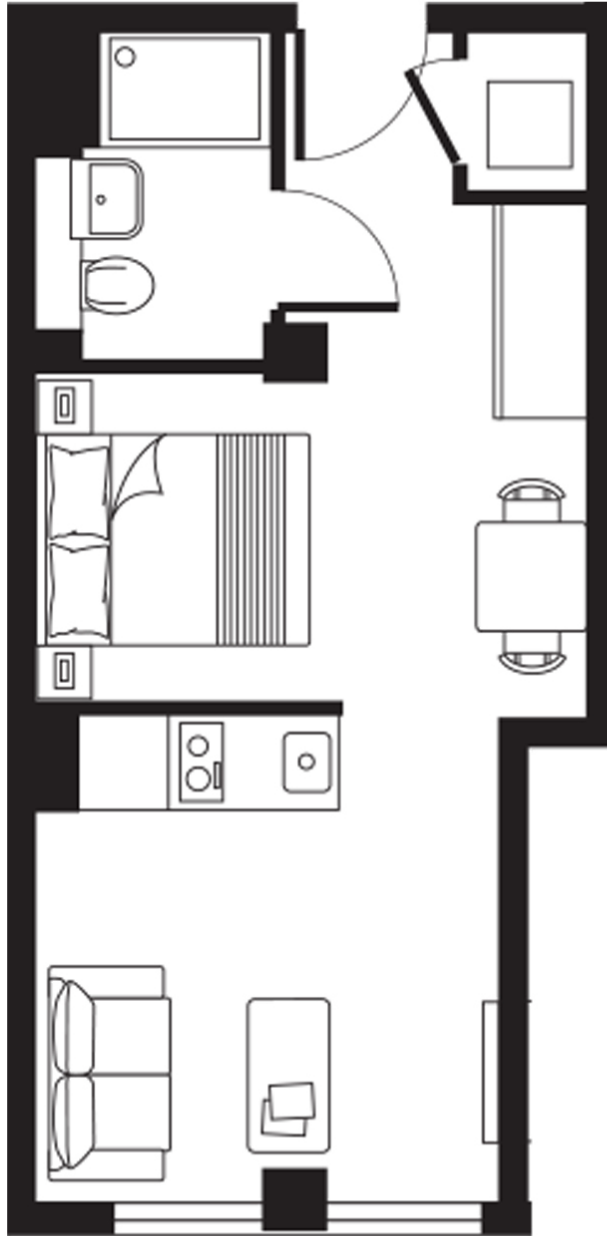


## BATH ROAD, SL1

**£1,075 pcm**

Spacious and modern studio apartment with nifty storage spaces. Located in Atria House, a secure building with fob entry, close to Slough Industrial Estate and multiple public transport options to central London.

- Modern
- Luxury Studio
- Designer Open Plan
- 281 sq. ft
- Video Security System
- EPC Rating D



Approx area:  
29.9 sq m / 322 sq ft

**LiFE RESIDENTIAL**

203 Trentham Court, Victoria  
Road, London, W3 6BT  
Sales: 020 3668 1112  
Lettings: 020 3668 1111

Energy Rating: D. We aim to make our particulars both accurate and reliable. However they are not guaranteed; nor do they form part of an offer or contract. If you require clarification on any points then please contact us, especially if you're traveling some distance to view. Please note that appliances and heating systems have not been tested and therefore no warranties can be given as to their good working order.