

BUTLER & STAG



2 Ardmore Place Ardmore Lane, Buckhurst Hill

Buckhurst Hill

£4,750 pcm



2 Ardmore Place Ardmore Lane

Buckhurst Hill

A beautifully presented detached five bedroom house in a gated development, positioned in the heart of Buckhurst Hill.

- Garage
- School Catchment Area
- Five Bedroom House
- Private Gated Development
- Great Location
- Detached





Set within this private gated development, is this fantastic five-bedroom detached home.

The internal accommodation is arranged over two floors. The ground floor comprises of a spacious through lounge, separate dining room, study room and a modern open plan kitchen which includes fitted appliances and beautiful living space. There also is a utility room with internal door to a garage creating easy access for further storage if required alongside a downstairs W/C.

Upon entrance to the first floor, there are five double bedrooms, two bedrooms have en-suite bathrooms, and there is also a contemporary family bathroom.

The rear garden has been beautifully landscaped with access to an outhouse. To the front of the property there is spacious driveway providing parking for a number of cars and a double garage.

Ardmore Place is located within easy reach of Buckhurst Hill Station (Central Line) for swift access into the City, Canary Wharf, West End and beyond. Also, within close proximity, is the ever-popular parade of shops on Queens Road with its comprehensive range of independent shops, delightful boutiques, eateries and restaurants. This area is renowned for its high quantity of excellent primary and secondary schools, both private and state.

Council Tax Band - G

Council Tax band: G

EPC Energy Efficiency Rating: C

EPC Environmental Impact Rating: C







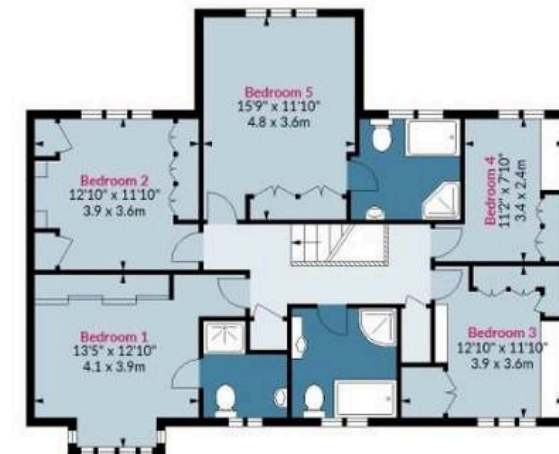
Ardmore Place, IG9

Approx. Gross Internal Area(Including Garage/Gym/Garden Room) 2826 Sq Ft - 262.54 Sq M
Approx. Gross Internal Area(Excluding Garage/Gym/Garden Room) 2140 Sq Ft - 198.81 Sq M



Ground Floor

Floor Area 1070 Sq Ft - 99.40 Sq M



First Floor

Floor Area 1070 Sq Ft - 99.40 Sq M



Floor plan is for illustrative purposes only and is not to scale. Every attempt has been made to ensure the accuracy of the floor plan shown, however all measurements, fixtures, fittings and data shown are an approximate interpretation for illustrative purposes only.

FROM EAST LONDON ENERGY TO WEST ESSEX EASE

We Make Moving Home Easy.

At Butler and Stag, we do more than just connect London to West Essex – we make the move seamless. With offices spanning from vibrant East London to the tranquillity of West Essex, we understand the nuances of each area and the journey people take between them. Our marketing goes beyond standard listings, showcasing every property with precision, creativity, and reach that others simply can't match. Coupled with an unparalleled attention to detail, from first enquiry to final move-in, we ensure every client and customer feels informed, supported, and confident. Simply put, we do the little things that make a big difference, setting us apart in every step of the property experience.



LONDON STRATFORD SOUTH WOODFORD BUCKHURST HILL LOUGHTON EPPING BEYOND

Like what you see? Let's talk

Book your **FREE** valuation now



01992 667666

theydon@butlerandstag.com

4 Forest Drive, Theydon Bois, CM16 7EY

[butlerandstag.uk](https://www.butlerandstag.uk)

IMPORTANT NOTICE - These particulars have been prepared in good faith and they are not intended to constitute part of an offer or contract. We have not performed a structural survey on this property and the services, appliances and specific fittings have not been tested. All photographs, measurements, floor plans and distances referred to are given as a guide and should not be relied upon.

BUTLER & STAG

