



HARTFIELD ROAD, SW19

£3,500 per month

Three bedrooms
Two bathrooms
Wrap around balcony
Unfurnished
Penthouse
Energy rating: b

@marshandparsons
marshandparsons.co.uk

MARSH &
PARSONS



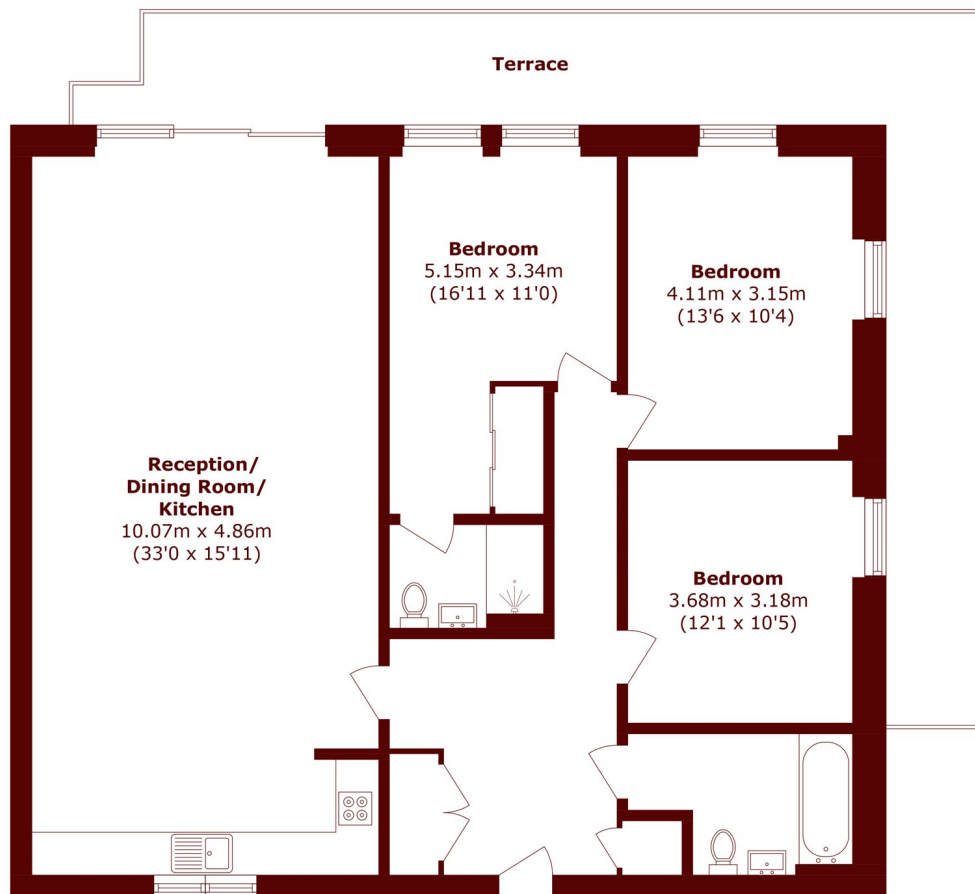
ABOUT THE PROPERTY

Finished to a high specification, this spacious three double bedroom penthouse apartment is set in a well maintained block with lift service. The apartment includes a spacious lounge with open plan fitted kitchen with access to a wrap around balcony, family bathroom, en-suite shower room to master, large terrace with fantastic views across the city.

The property is within walking distance to Wimbledon town centre and the mainline station.



STEP INSIDE HARTFIELD ROAD



Total area (approx.): 119.2 sq. m (1283.1 sq. ft)
Terrace Total (approx.): 31.9 sq. m (343.4 sq. ft)

Wimbledon
020 8879 6661

Energy Rating: B We aim to make our particulars both accurate and reliable. However, they are not guaranteed; nor do they form part of an offer or contract. If you require clarification on any points then please contact us, especially if you're traveling some distance to view. Please note that appliances and heating systems have not been tested and therefore no warranties can be given as to their good working order

MARSH &
PARSONS