



James Chiltern
Estate Agents



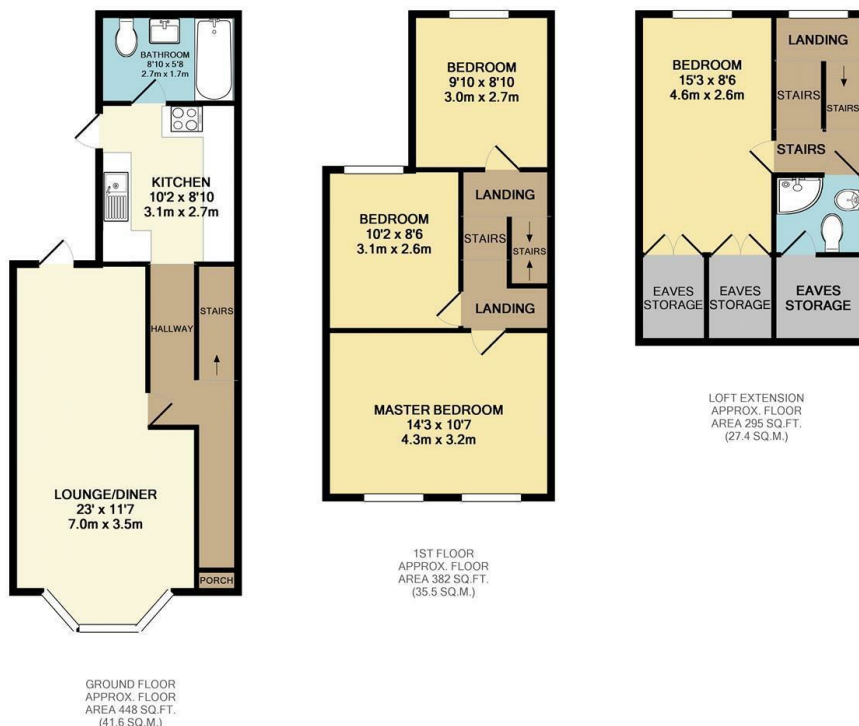
22 Dennett Road, Croydon, CR0 3JA

£2,500 Per Month

- Four-bedroom house arranged over three floors
- Well-maintained throughout
- Short distance to Croydon Town Centre
- Ideal for families or professional households
- Large double reception room
- Private rear garden
- Excellent transport links nearby
- Upstairs and downstairs bathrooms
- Spacious and flexible living accommodation
- Close to shops and local amenities

182 London Road, Croydon, Surrey, CR0 2TE
0208 681 8133

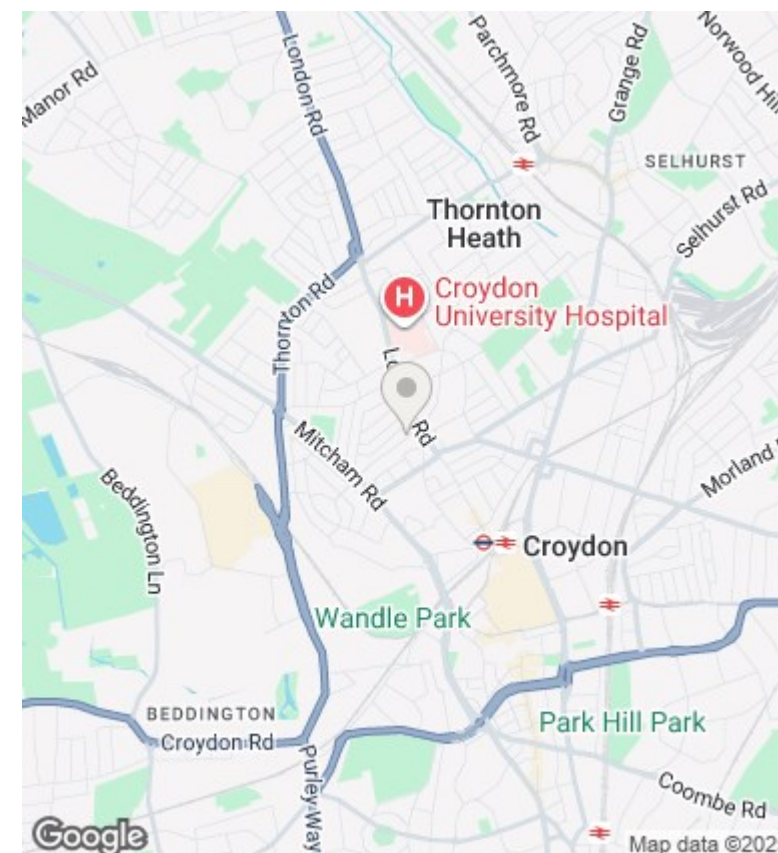
lettings@jameschiltern.com
www.jameschiltern.com



TOTAL APPROX. FLOOR AREA 1125 SQ.FT. (104.5 SQ.M.)

Whilst every attempt has been made to ensure the accuracy of the floor plan contained here, measurements of doors, windows, rooms and any other items are approximate and no responsibility is taken for any error, omission, or mis-statement. This plan is for illustrative purposes only and should be used as such by any prospective purchaser. The services, systems and appliances shown have not been tested and no guarantee as to their operability or efficiency can be given.

Made with Metropix ©2015



Directions

Viewings

Viewings by arrangement only. Call 0208 681 8133 to make an appointment.

Council Tax Band

C

EPC Rating:

D

Energy Efficiency Rating		
	Current	Potential
Very energy efficient - lower running costs		
(92 plus) A		
(81-91) B		82
(69-80) C		
(55-68) D	65	
(39-54) E		
(21-38) F		
(1-20) G		
Not energy efficient - higher running costs		
England & Wales	EU Directive 2002/91/EC	