



Connells

Northwick Road
Watford



Property Description

Connells are delighted to present this charming five-bedroom 'non-standard' end-of-terrace home located on the ever-popular Northwick Road. Offering generous living space throughout and the potential for further extension (STPP), the property features a bright reception room with access to the rear garden, a separate dining room, and a spacious modern kitchen.

Upstairs, there are five well-proportioned bedrooms, with the fifth currently used as a study, along with a family bathroom and separate WC. Outside, the home benefits from a large private rear garden and off-street parking.

Ideally positioned close to South Oxhey's shops and amenities, the property is also within easy reach of Carpenders Park Station, providing fast links to London Euston. Oxhey Woods is just a short walk away, offering beautiful green space for outdoor leisure.

A fantastic opportunity for families or professionals - for more information or to arrange a viewing, please contact Connells today.

Entrance Hall

Door to front aspect, window to front aspect, stairs to first floor landing, radiator.

Dining Room

Window to front aspect, radiator.

Reception Room

Window to front aspect, television point, telephone point, sliding patio doors to rear garden, radiator.

Kitchen

Fitted kitchen comprised of wall and base units with work surfaces and tiling to complement, window to rear aspect, sink with drainer, eye level double electric oven, gas hob with extractor hood, plumbing for washing machine & dishwasher, space for fridge/freezer, breakfast bar, wall mounted boiler, radiator.

Lobby

Under-stairs storage, door to rear garden.

First Floor Landing

Stairs from entrance hall, loft access.

Bedroom One

Window to rear aspect, radiator.

Bedroom Two

Window to front aspect, radiator.

Bedroom Three

Window to front aspect, radiator.

Bedroom Four

Window to rear aspect, radiator.

Bedroom Five / Study

Window to front aspect, radiator.

Bathroom

Window to rear aspect, bath with mixer taps and overhead shower, wash hand basin, radiator.

Separate Wc

Window to rear aspect, WC.

Outside

Front Garden

Block paved driveway, stairs to laid lawn, pathway to front door, side access.

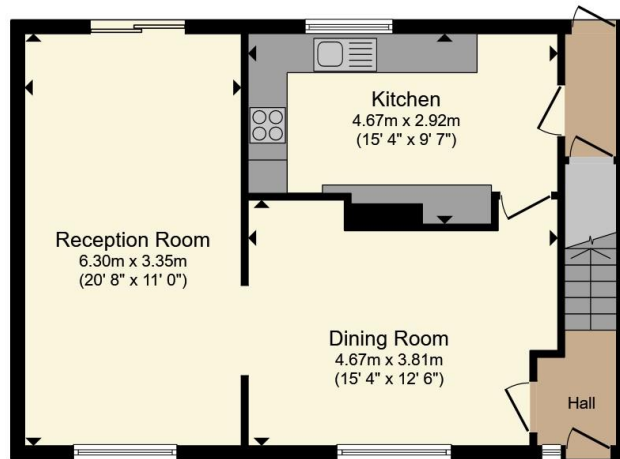
Rear Garden

Decking area, stairs rising to laid lawn area, shed, side access.

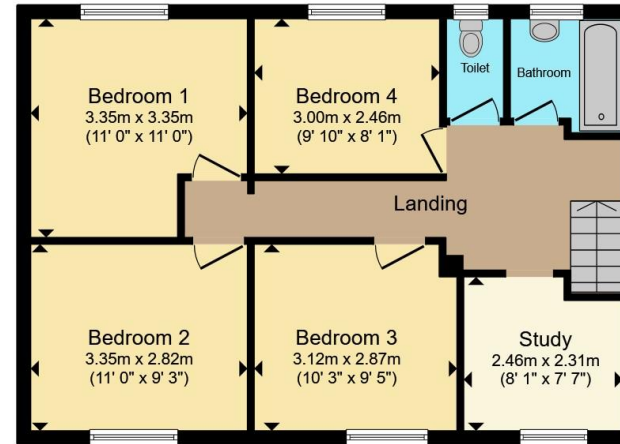








Ground Floor



First Floor

Total floor area 115.1 m² (1,239 sq.ft.) approx

This floor plan is for illustrative purposes only. It is not drawn to scale. Any measurements, floor areas (including any total floor area), openings and orientation are approximate. No details are guaranteed, they cannot be relied upon for any purpose and they do not form part of any agreement. No liability is taken for any error, omission or misstatement. A party must rely upon its own inspection(s). Powered by www.propertybox.io



To view this property please contact Connells on

T 01923 230 403
E watford@connells.co.uk

6 The Parade
 WATFORD WD17 1AA

EPC Rating: C Council Tax
 Band: C

Tenure: Freehold

view this property online connells.co.uk/Property/WTF315088



1. MONEY LAUNDERING REGULATIONS Intending purchasers will be asked to produce identification documentation at a later stage and we would ask for your co-operation in order that there will be no delay in agreeing the sale. 2. These particulars do not constitute part or all of an offer or contract. 3. The measurements indicated are supplied for guidance only and as such must be considered incorrect. Potential buyers are advised to recheck measurements before committing to any expense. 4. We have not tested any apparatus, equipment, fixtures, fittings or services and it is in the buyers interest to check the working condition of any appliances.

Connells Residential is registered in England and Wales under company number 1489613, Registered Office is Cumbria House, 16-20 Hockliffe Street, Leighton Buzzard, Bedfordshire, LU7 1GN. VAT Registration Number is 500 2481 05.

See all our properties at www.connells.co.uk | www.rightmove.co.uk | www.zoopla.co.uk

Property Ref: WTF315088 - 0009