



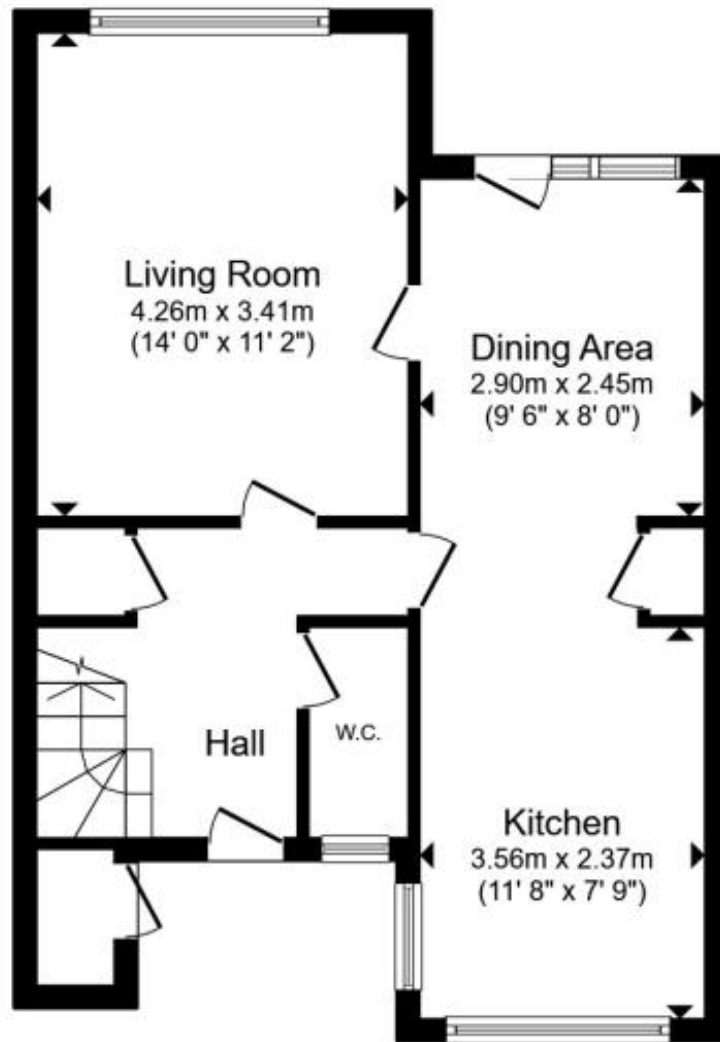
**Linton Close, Redditch B98 0NB**

**welcome to**

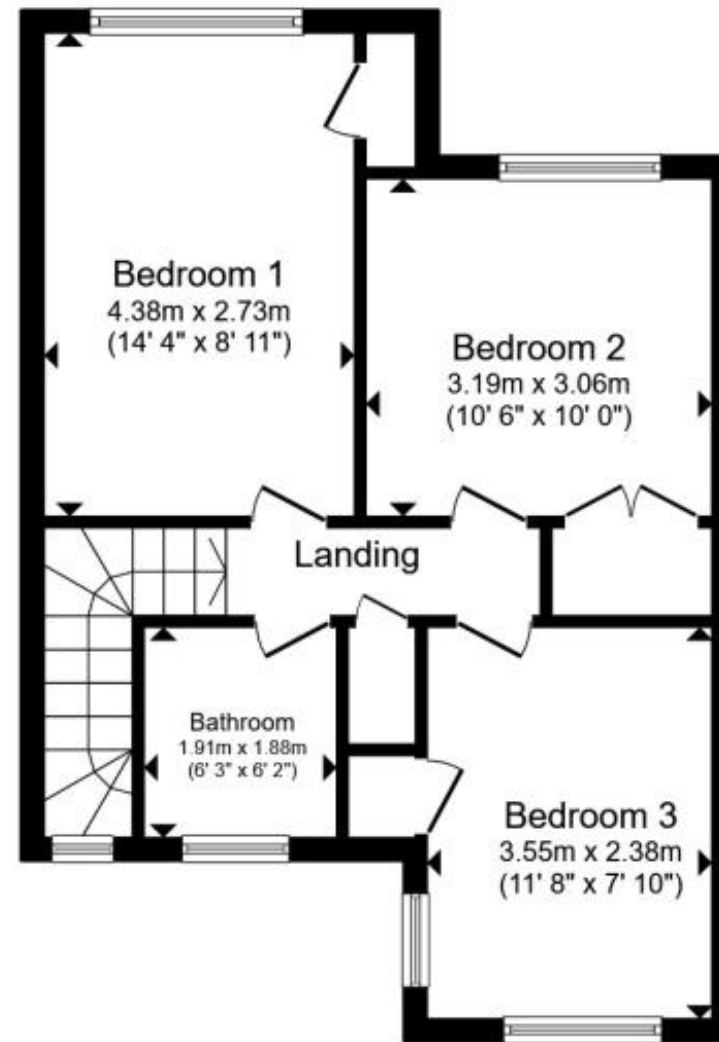
**Linton Close,Redditch**

WHAT A GOOD SIZED FAMILY HOME THIS IS. NEEDS SOME LOVE AND ATTENTION, BUT CAN YOU MAKE IT INTO SOMETHING SPECIAL ? IT OFFERS A DOWNSTAIRS TOILET. KITCHEN DINER, LOUNGE, THREE GOOD SIZED BEDROOMS, FAMILY BATHROOM. WITH GOOD SIZED REAR GARDEN WITH GATED ACCESS. NO CHAIN.





**Ground Floor**



**First Floor**

Total floor area 90.1 m<sup>2</sup> (970 sq.ft.) approx

This floor plan is for illustrative purposes only. It is not drawn to scale. Any measurements, floor areas (including any total floor area), openings and orientation are approximate. No details are guaranteed, they cannot be relied upon for any purpose and they do not form part of any agreement. No liability is taken for any error, omission or misstatement. A party must rely upon its own inspection(s). Powered by [www.propertybox.io](http://www.propertybox.io)

### **Approach**

Via pathway leading up to main accommodation obscure double-glazed door.

### **Hall**

Obscure double-glazed panel to front. Radiator. Stairs to upper floor accommodation. Door to Understairs storage cupboard. Doors off to Downstairs Toilet, Lounge and Kitchen Diner.

### **Downstairs Toilet**

Obscure double-glazed window to front Electric fuse board. Fitted toilet. Wall mounted sink. Tiling to splash prone areas. Fitted cupboard.

### **Kitchen Diner**

Double glazed window to front, side and rear. Double glazed door to rear gives access to rear garden. A range of fitted wall and base units with work surface over. Sink and drainer with mixer tap over. Tiling to splash prone areas. Space for cooker, washing machine and fridge. Door to storage cupboard. Radiator

### **Lounge**

Double glazed window to rear. Radiator

### **Landing**

Double glazed window to front on stairs. Loft access. Door to built in storage cupboard. Doors off to bedroom one, two and three and family bathroom. Exposed floorboards

### **Bedroom**

Double glazed window to rear. Opening into wardrobe area. Radiator. Exposed floorboards.

### **Bedroom**

Double glazed window to rear. Radiator. Built in wardrobes. Exposed floorboards

### **Bedroom**

Double glazed window to front and side. Radiator. Built in storage cupboard. Exposed floorboards.

### **Bathroom**

Obscure double-glazed window to front. Low level toilet. Sink and pedestal. Panelled bath with mixer tap over and wall mount shower over. Radiator. Feature splash back to splash prone areas.

### **Frontage**

access to storage cupboard housing meters. paved area.

### **Rear Garden**

Paved patio area. brick built storage cupboard. Gravelled beds. Decked area with balustrade. further gravelled area and access to a shed, Fence to sides and rear. Gated access to front.

### **Agents Note**

Disclaimer All services /appliances have not and will not be tested.



***view this property online*** [shipways.co.uk/Property/RDC110509](http://shipways.co.uk/Property/RDC110509)



welcome to

## Linton Close, Redditch

- NO CHAIN
- END TERRACE
- DOWNSTAIRS TOILET
- LOUNGE
- KITCHEN DINER

Tenure: Freehold EPC Rating: C  
Council Tax Band: B

**£180,000**



Please note the marker reflects the  
postcode not the actual property

**view this property online** [shipways.co.uk/Property/RDC110509](https://shipways.co.uk/Property/RDC110509)



Property Ref:  
RDC110509 - 0005

1. MONEY LAUNDERING REGULATIONS Intending purchasers will be asked to produce identification documentation at a later stage and we would ask for your co-operation in order that there is no delay in agreeing the sale. 2. These particulars do not constitute part or all of an offer or contract. 3. The measurements indicated are supplied for guidance only and as such must be considered incorrect. Potential buyers are advised to recheck measurements before committing to any expense. 4. We have not tested any apparatus, equipment, fixtures or services and it is in the buyers interest to check the working condition of any appliances. 5. Where an EPC, or a Home Report (Scotland only) is held for this property, it is available for inspection at the branch by appointment. If you require a printed version of a Home Report, you will need to pay a reasonable production charge reflecting printing and other costs. 6. We are not able to offer an opinion either written or verbal on the content of these reports and this must be obtained from your legal representative. 7. Whilst we take care in preparing these reports, a buyer should ensure that his/her legal representative confirms as soon as possible all matters relating to title including the extent and boundaries of the property and other important matters before exchange of contracts.

Shipways is a trading name of Sequence (UK) Limited which is registered in England and Wales under company number 4268443, Registered Office is Cumbria House, 16-20 Hockliffe Street, Leighton Buzzard, Bedfordshire, LU7 1GN. VAT Registration Number is 500 2481 05.

  
shipways



**01527 65155**



[Redditch@shipways.co.uk](mailto:Redditch@shipways.co.uk)



3 Alcester Street, REDDITCH, Worcestershire,  
B98 8AE



[shipways.co.uk](https://shipways.co.uk)