



Queens Road

Richmond, TW10

£13,000 per month
(£3,000 per week)

Gorgeous 6-bedroom detached with ample living space available located on one of Richmond's most prestigious roads.

CHESTERTONS



Queens Road

Richmond, TW10

- 6 Double Bedrooms
- Open Plan Kitchen
- Utility Room
- Study
- Driveway
- Garden



This stunning detached period property offers a perfect blend of character and modern living located perfectly in Richmond. Boasting six spacious bedrooms, five bathrooms, utility room, and a study, this home provides ample space for a growing family or those who love to entertain. The property features a wonderfully well-kept garden with a patio, ideal for enjoying outdoor living and hosting gatherings. In addition, the house benefits from off-road parking, ensuring convenience and peace of mind. With a perfect mix of period features and contemporary finishes, this property offers a unique and stylish living experience. Don't miss the opportunity to make this exceptional property your new home sweet home. Contact us today to arrange a viewing and discover all the charms this

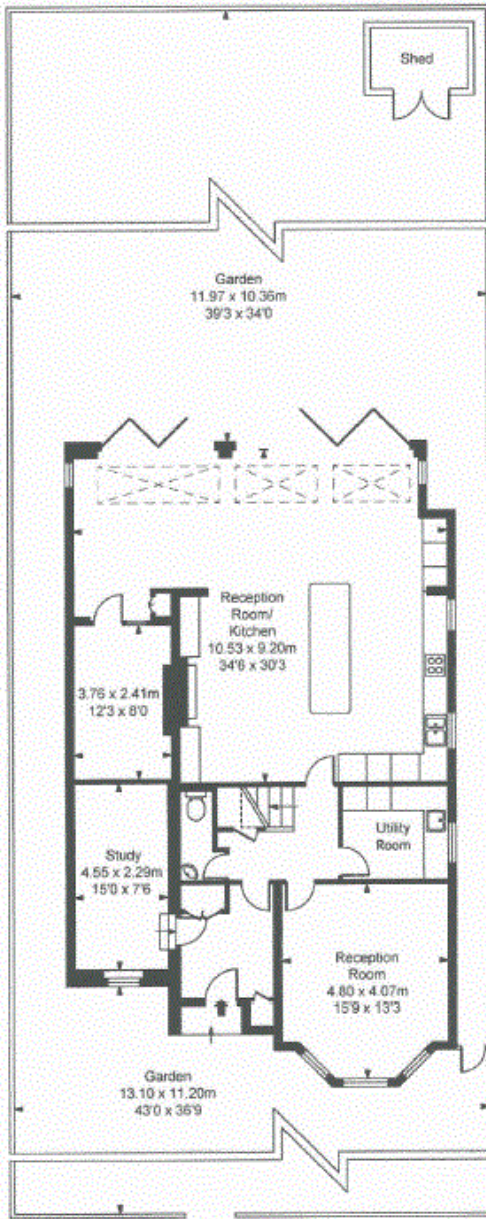
Minimum Term: 12 months
Deposit Required: £18,000.00
Local Authority: London Borough of Richmond upon Thames
Council Tax Band: H
EPC Rating: C
Furnished, Part Furnished, Unfurnished

Chestertons Richmond Lettings

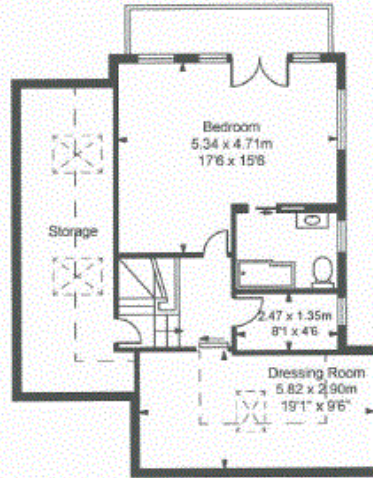
23a Friars Stile Road
Richmond
Surrey
TW10 6NH
richmondlettingsusers@chestertons.co.uk
02037583333
chestertons.co.uk

Additional tenant charges apply (fees apply to non-AST tenancies only)
Tenancy Agreement Fee: £300
References per Tenant/Guarantor: £60
Inventory check (approx. £100 – £250 inc. VAT)
[chestertons.co.uk/property-to-rent/applicable-fees](https://www.chestertons.co.uk/property-to-rent/applicable-fees)

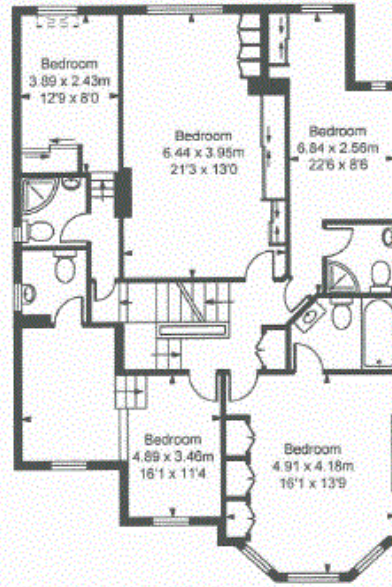
Queens Road, TW10
 Approximate Gross Internal Area
 314.14 sq m / 3,381 sq ft
 (Including restricted height
 under 1.5m □ = □ □)



Ground Floor
 Approximate Gross Internal Area
 128.28 sq m / 1,381 sq ft



Second Floor
 Approximate Gross Internal Area
 73.57 sq m / 792 sq ft



First Floor
 Approximate Gross Internal Area
 112.29 sq m / 1,209 sq ft

ILLUSTRATION FOR IDENTIFICATION PURPOSES ONLY
 ALL MEASUREMENTS ARE MAXIMUM, AND INCLUDE WINDOW BAYS AND WARDROBES WHERE APPLICABLE
 THIS PLAN MUST NOT BE REPRODUCED BY ANY OTHER PERSON WITHOUT PERMISSION.

