



**Church Street, Teston, Maidstone, Kent, ME18 5AG**  
**Offers In Excess Of £600,000**



A beautifully presented detached bungalow situated in a sought after position in the ever-popular village of Teston. Offered to the market in pristine order throughout. The accommodation features a dual aspect sitting room with feature log burner, stunning kitchen/diner, family room, third bedroom, two further bedrooms and a modern shower room. There is a driveway providing ample off-road parking and a well-presented garden to the rear which features a summerhouse, various storage sheds and a 18'4 x 12'1 cabin, which incorporates a WC and, in our view, could provide for a number of uses such as a games room, salon or work from home office. An internal viewing is highly recommended. Contact PAGE & WELLS King Street Office on 01622 756703.



## PROPERTY INFORMATION

Tenure: Freehold  
EPC Rating: D  
Council Tax Band: E

## LOCATION

Situated in a most sought after setting in the village of Teston. Maidstone, the county town of Kent, is approximately 5-miles away, where an extensive range of amenities can be found.

## KEY FEATURES

- Beautifully presented 2 bed detached bungalow
- Stunning kitchen/diner
- Dual aspect sitting room with feature log burner
- Family room/Bedroom three
- Modern shower room
- 18'4 x 12'1 cabin
- Ample off-road parking
- Village location

## ACCOMMODATION

Entrance Hall

Sitting Room

Open Plan Kitchen/Diner

Family Room

Bedroom One

Bedroom Two

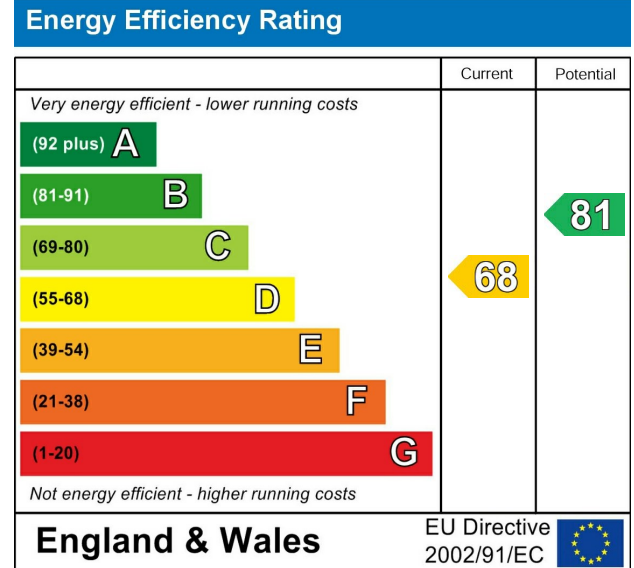
Shower Room

## EXTERNALLY

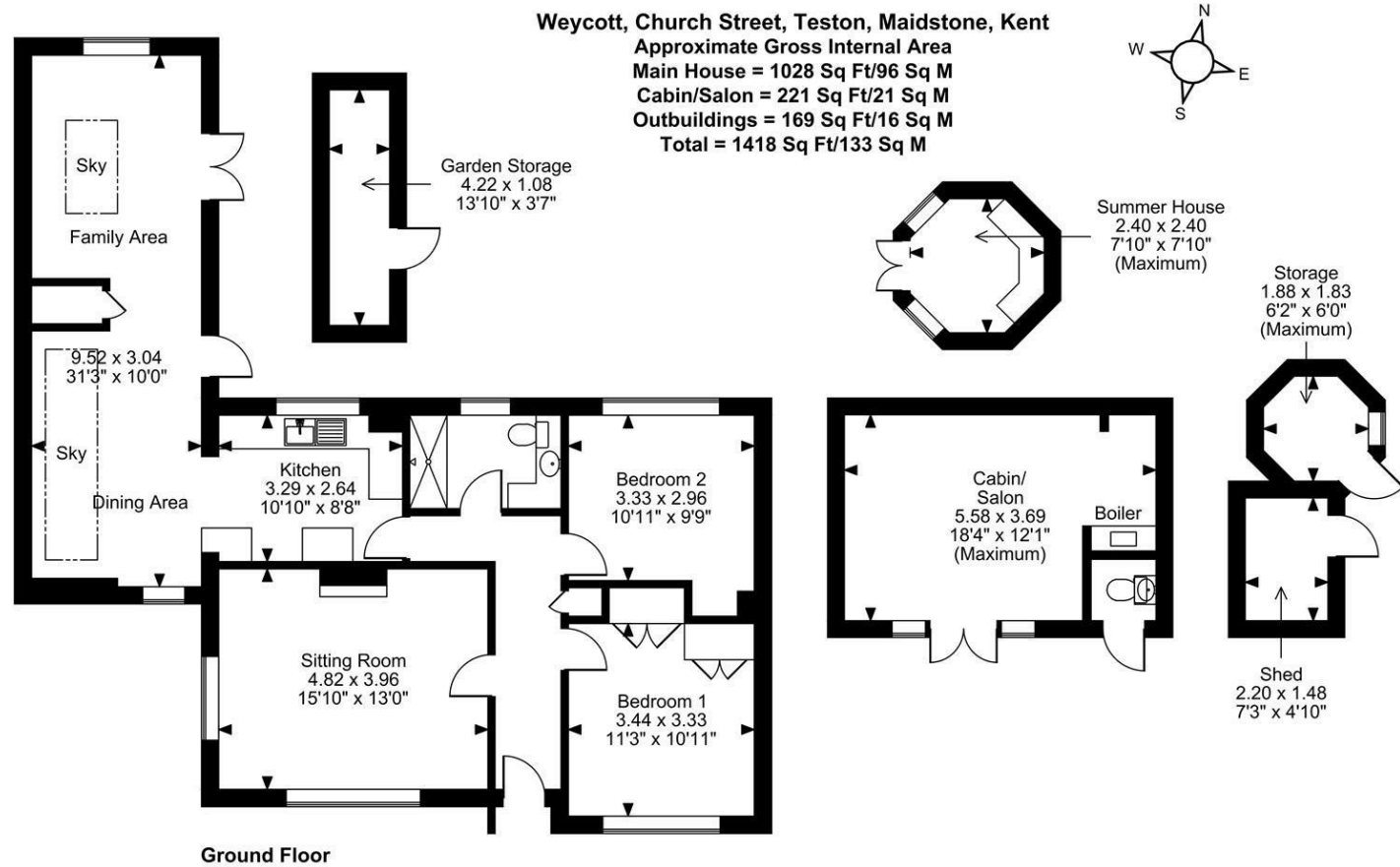
There are off-road parking facilities to the front and a well-presented rear garden with various outbuildings, including a summerhouse and cabin.

## VIEWING

Viewing strictly by arrangements with the Agent's Head Office: 52-54 King Street, Maidstone, Kent ME14 1DB.  
Tel: 01622 756703.



Page & Wells limited for themselves and for the vendors of this property whose agents they are give notice that: 1. These particulars do not constitute any part of, an offer or a contract. 2. All statements contained in these particulars as to this property are made without responsibility on the part of Page & Wells Limited or the Vendor. 3. None of the statements contained in these particulars as to the property is to be relied on as statements or representations of fact. 4. Any intending purchaser must satisfy himself by inspection or otherwise as to the correctness of each of the statements contained in these particulars. 5. The vendor does not make or give, and neither Page & Wells Limited nor any person in their employment has any authority to make or give any representation whatsoever in relation to this property. These particulars are supplied on the understanding that all negotiations are carried out throughout Page & Wells Limited. Properties with a reference prefixes EAA are those which Page & Wells Limited disclose an interest in accordance with the provisions of the Estates Agents Act 1979



**FOR ILLUSTRATIVE PURPOSES ONLY - NOT TO SCALE**  
The position & size of doors, windows, appliances and other features are approximate only.  
© ehous. Unauthorised reproduction prohibited. Drawing ref. dig/8662378/LCO

