



The Roundhouse, Spaniards Road

Hampstead, NW3

Asking Price £4,750,000

A spectacular and contemporary detached freehold house comprising circa 4,000 square feet of accommodation, five bedrooms, three bathrooms, three reception rooms, a private south facing terrace and garden, and a large underground garage, providing secure parking for several vehicles.

This unique home further features three spacious living areas, kitchen with Gaggenau Hausgeräte appliances, a second kitchen/bar, a principal bedroom suite occupying the entire first floor, with a dressing room and en-suite bathroom with walk in shower, bath, & twin sinks.

The property is located on a plot of land that abuts Hampstead Heath and has a private gate providing direct access to the undulating acres of Hampstead Heath.

Hampstead Village and Highgate Village are both located only one mile from the property. Sole agent.

CHESTERTONS



The Roundhouse, Spaniards Road

Hampstead, NW3

- Spectacular & secure contemporary freehold house
- Circa 4,000 square feet of accommodation
- Principal bedroom suite with dressing room & bathroom
- Four further bedrooms & two further bathrooms
- 37' x 25' reception room
- 24' x 21' reception room
- 20' x 15' reception room
- South facing terrace and garden
- Secure underground garage for several cars
- Private gate to Hampstead Heath
- One mile to Hampstead Village & Highgate Village



Tenure: Freehold
Service Charge: £8,577 per annum
Ground Rent: £0
Local Authority: Camden
Council Tax Band: H

Energy Efficiency Rating		
	Current	Potential
Very energy efficient - lower running costs		
A (91-100)		
B (81-90)		
C (69-80)	72	79
D (55-68)		
E (39-54)		
F (21-38)		
Not energy efficient - higher running costs		
G (1-20)		
England, Scotland & Wales EU Directive 2002/91/EC		

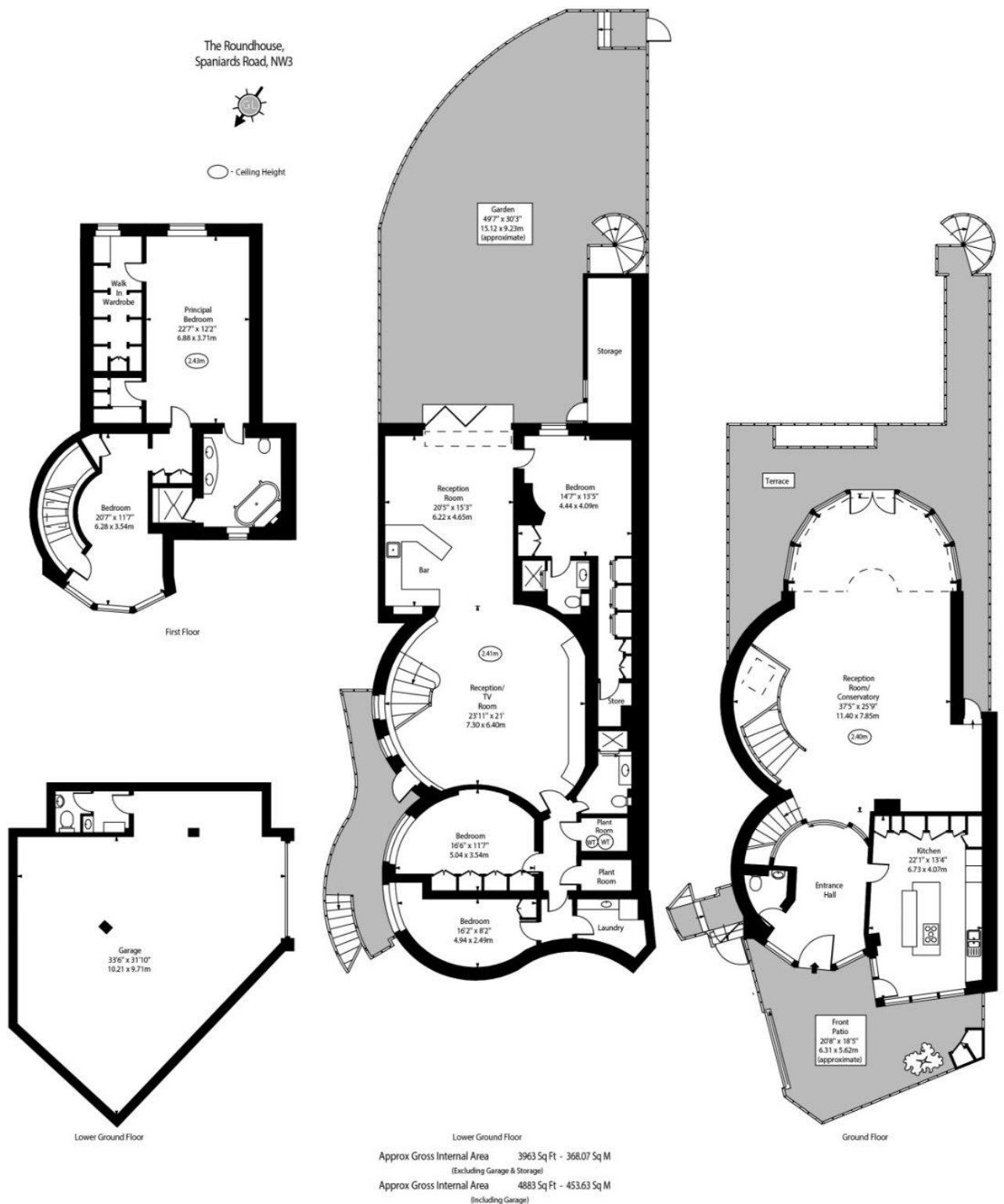
Chestertons Hampstead Sales

55-56 Hampstead High Street
Hampstead
NW3 1QH
hampstead@chestertons.co.uk
020 7794 3311
chestertons.co.uk

The Roundhouse,
Spaniards Road, NW3



○ Ceiling Height



Every attempt has been made to ensure the accuracy of the floor plan shown. However, all measurements, fixtures, fittings, and data shown are approximate interpretations and for illustrative purposes only. Measured according to the RICS. Not To Scale.
www.gridlens.co.uk
Prepared for Chestertons
Ref No. 030271A

