



Guide Price
£350,000

Freehold

3x  1x  2x 

**Hereford Close,
Kennington, Ashford,
Kent, TN24**

OVER 60?

Secure this property
for up to **59% less!**

Wards
Helping you move forwards



Main features

- Garage with allocated parking
- Versatile accommodation across 3 floors
- Brand new boiler
- Great access to the M20 motorway
- A short distance to amenities, schools, bus routes and Eureka business park

Accommodation

GROUND FLOOR

Entrance Hall
 Kitchen: 13'5 x 8'3 (4.09m x 2.52m)
 Dining Room: 12'0 x 10'4 (3.66m x 3.15m)
 Conservatory: 8'8 x 0'0 (2.64m x 0.00m)

FIRST FLOOR

Landing
 Bedroom 2: 12'0 x 9'3 (3.66m x 2.82m)
 Lounge: 13'5 x 12'0 (4.09m x 3.66m)

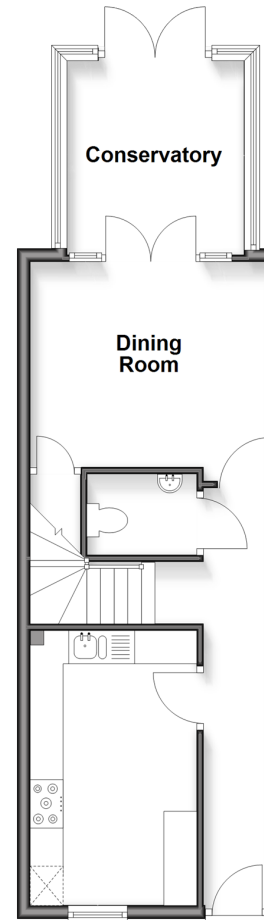
SECOND FLOOR

Landing
 Bedroom 3: 12'1 x 6'9 (3.69m x 2.06m)
 Bathroom: 8'6 x 4'7 (2.59m x 1.40m)
 Bedroom 1: 13'2 x 10'2 (4.02m x 3.10m)
 En-suite Shower Room: 6'5 x 5'1 (1.96m x 1.55m)

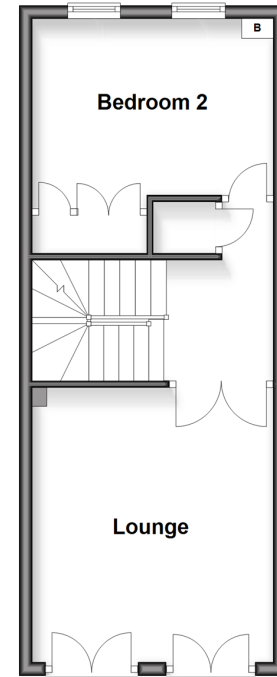
OUTSIDE

Rear Garden
 Garage
 Allocated Parking

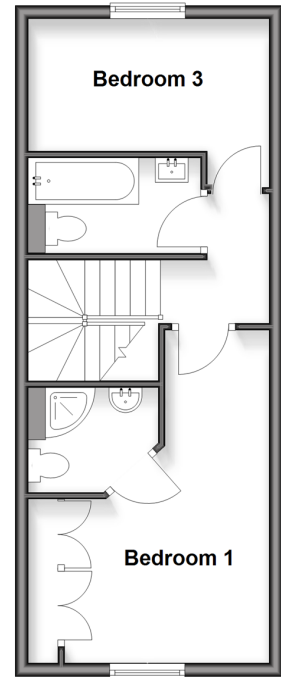
Ground Floor
 Approx. 43.6 sq. metres (469.2 sq. feet)



First Floor
 Approx. 35.5 sq. metres (381.9 sq. feet)



Second Floor
 Approx. 35.5 sq. metres (382.4 sq. feet)



Call Ashford - 01233 639531 ■ wardsof Kent.co.uk

- Legal advice should be taken to verify fixtures/fittings, planning, alterations and/or lease details
- Appliances & services are untested, dimensions are approximate and floor plans are not to scale
- Through a Homewise Home For Life Plan people aged 60+ can secure this property for up to 50% less, by purchasing a Lifetime Lease.



12237125/20251121/SG/RB