

## Woodside Avenue, N6

£1,000,000

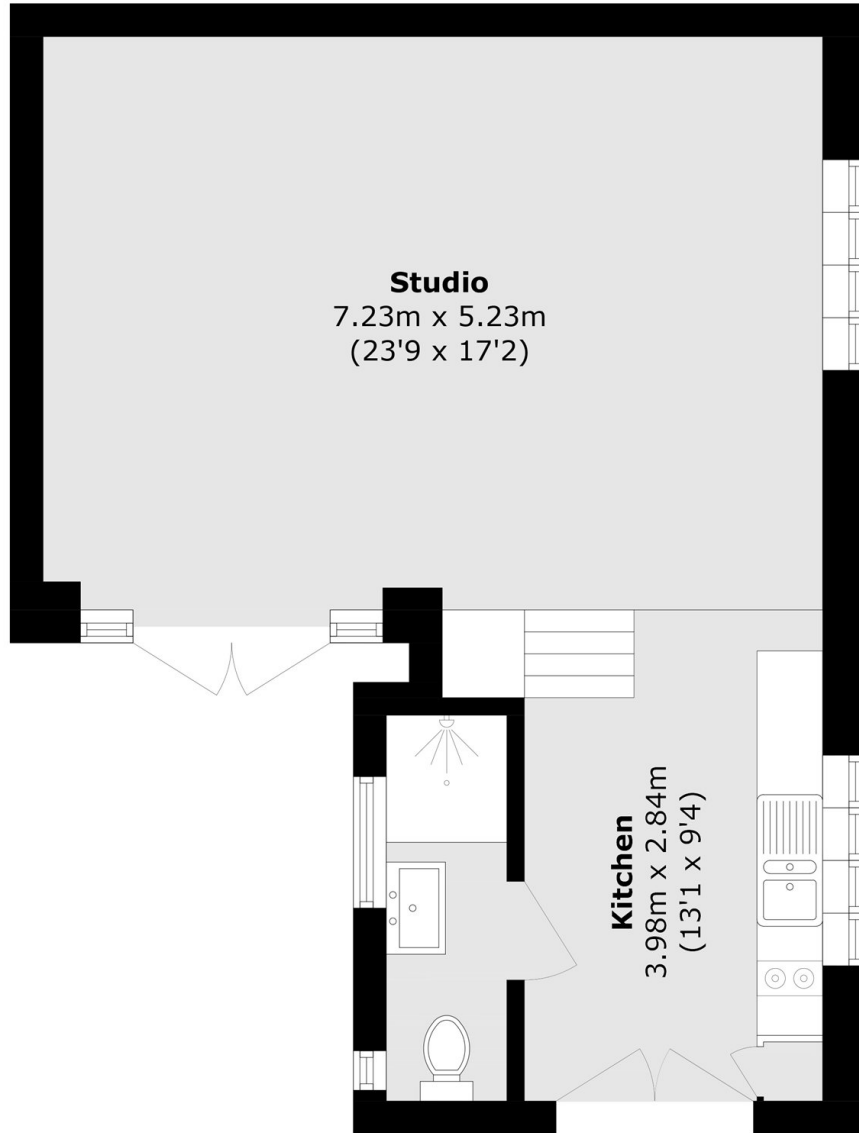
This recently built detached studio house, is discreetly tucked away behind a gated entrance and enjoys a magical ambience with gardens to three sides along with secure parking.

Hidden from view this charming property is positioned within reach of two local underground stations, a number of open spaces and is less than half a mile from the local shopping.

### Features

- Detached Studio House
- Separate Kitchen
- Recently Built
- Surrounding Gardens
- Off-Street Parking
- Gated Entrance

# Woodside Avenue, London, N6



Total area (approx.): 55.6 sq. m (598.4 sq. ft)