



Castles

OFFERS IN EXCESS OF

£419,950

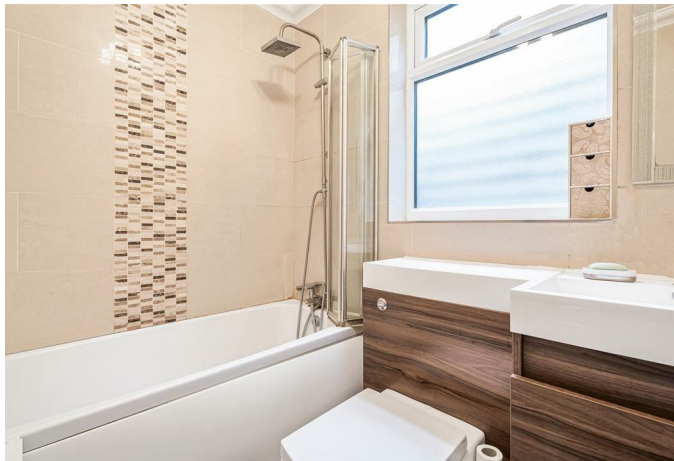
Chichester Road

London, N9 9DF

PROPERTY SUMMARY

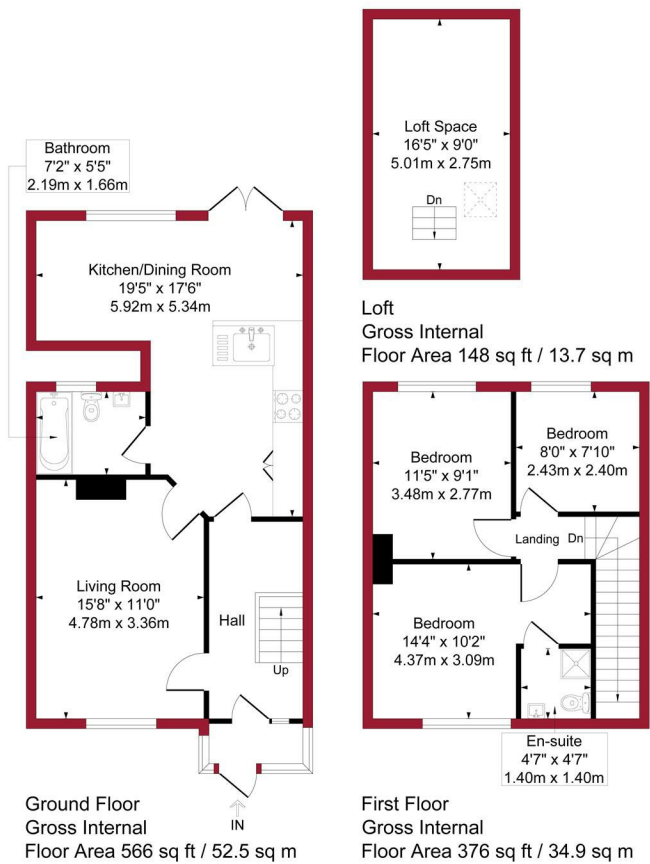
A three bedroom 1930's end of Terraced property situated within 1/2 mile of Edmonton Green with its shops and Transport links. The property comprises of Reception, kitchen/diner and bathroom to ground floor, with a further three bedrooms with ensuite to bedroom one. It also has features to include, gas central heating and double glazing.



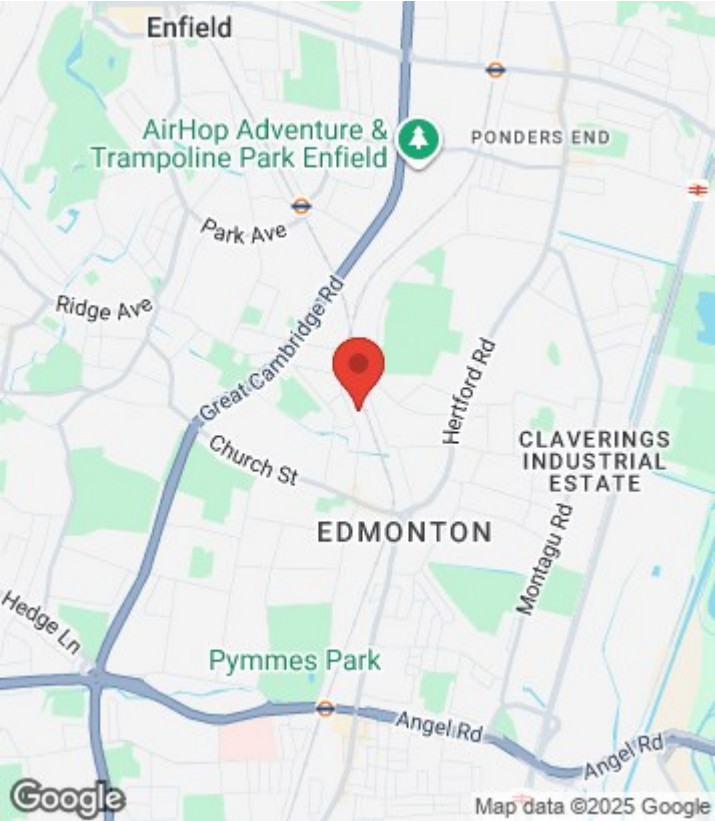
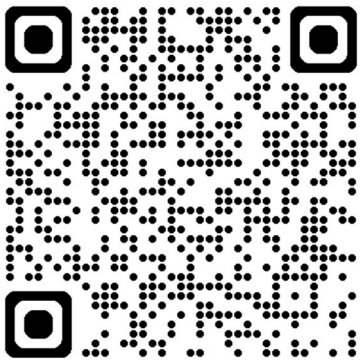


Chichester Road, London, N9

Approximate Gross Internal Area = 1090 sq ft / 101.1 sq m



For a guide to the area
please scan this code for
more information



House
Freehold
Council:
Council Tax Band: C

Agents Note: Whilst every care has been taken to prepare these particulars, they are for guidance purposes only. All measurements are approximate and are for general guidance purposes only and whilst every care has been taken to ensure their accuracy, they should not be relied upon and potential buyers/tenants are advised to recheck the measurements



OFFICE ADDRESS
438 Hertford Road
Edmonton
London
N9 8AB

OFFICE DETAILS
020 8804 8123
edmonton@castles.london
<https://www.castles.london/>

