

Approximate total area⁽¹⁾
1502 ft²
139.6 m²

(1) Excluding balconies and terraces

Calculations reference the RICS IPMS 3C standard. Measurements are approximate and not to scale. This floor plan is intended for illustration only.

GIRAFFE360



£3,100 PCM Abercorn Close, SOUTH CROYDON, CR2 8TG

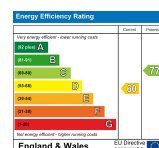
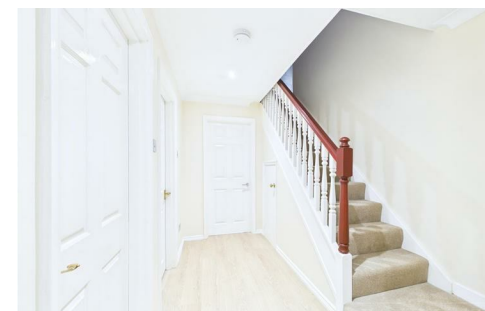
- Refurbished throughout
- Two bathrooms
- Utility room
- Driveway
- Four bedrooms
- Downstairs cloakroom
- Double garage

Nestled in the desirable area of Selsdon Ridge, is this stunning detached house on Abercorn Close offers a perfect blend of modern living and comfort. With three double bedrooms and one single bedroom, this property is ideal for families seeking a welcoming home. The house boasts two well-appointed reception rooms, providing ample space for relaxation and entertaining guests.

Recently refurbished, the property features downstairs cloakroom, brand-new kitchen with appliances and utility room with access to double garage and garden. The stylish new flooring adds to the overall charm, making it a delightful space to call home. The master bedroom benefits from an ensuite bathroom, providing a private sanctuary and additional family shower room.

The house includes a double garage with power and light and driveway offering convenient parking. The outdoor space is perfect for a family and it is also within walking distance of Selsdon Nature reserve.

EPC band D Council tax band G



TAX BAND: G

Agents Note: Whilst every care has been taken to prepare these sales particulars, they are for guidance purposes only. All measurements are approximate and for general guidance purposes only and whilst every care has been taken to ensure their accuracy, they should not be relied upon and potential buyers are advised to recheck the measurements

