



Marion Crescent, Maidstone, Kent, ME15 7DZ
Guide Price £425,000



GUIDE PRICE £425,000 TO £450,000

BEAUTIFULLY PRESENTED TWO/THREE-BEDROOM DETACHED CHALET BUNGALOW WITH PRIVATE REAR GARDEN AND GARAGE.

Marion Crescent is a popular residential road on the south side of Maidstone, ideally situated for families and commuters alike. The area is well-served by highly regarded local schools, including Maidstone Grammar and New Line Learning Academy. There are excellent transport links nearby, with easy access to the A20 and M20, and both Maidstone East and West stations offering direct services to London. Local amenities include a range of shops, supermarkets, and leisure facilities, with Maidstone town centre just a short distance away.

Upon entering through the practical porch, you are welcomed into a generous hallway that leads to two well-proportioned bedrooms—one of which could alternatively serve as a dining room—alongside a sleek modern bathroom and a handy utility room. At the end of the hall, the bright and inviting lounge forms the heart of the home, ideal for family gatherings and featuring direct access to the garden. The adjoining stylish kitchen offers ample workspace and a well-planned layout. Upstairs, you'll find a spacious principal bedroom complete with an en-suite shower room.

Outside, the property boasts a private, neatly enclosed rear garden with a patio seating area, while to the front there is a driveway with space for multiple vehicles as well as a garage. This property is expected to attract high interests so contact Page & Wells Loose Office today to arrange a viewing and avoid disappointment.



GROUND FLOOR

Porch 5'7" x 5'4" (1.71m x 1.63m)

Entrance Hall 15'2" x 4'2" (4.64m x 1.28m)

Lounge 15'7" x 12'10" (4.77m x 3.93m)

Kitchen 11'7" x 11'3" (3.55m x 3.45m)

Dining Room/Bedroom 3 12'6" x 9'1" (3.83m x 2.79m)

Utility Room 8'9" x 6'6" (2.68m x 2.00m)

Bedroom 2 13'3" x 8'9" (4.06m x 2.68m)

Bathroom

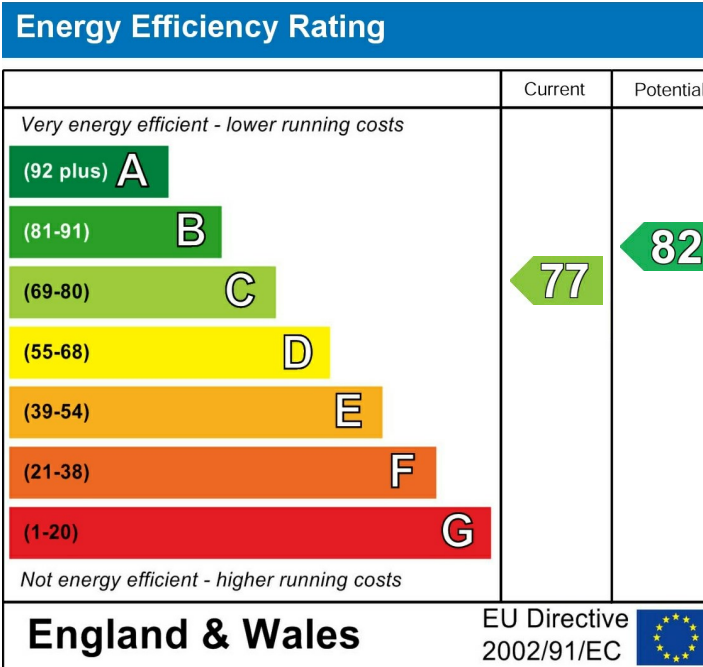
FIRST FLOOR

Bedroom 1 24'6" x 13'6" (7.48m x 4.13m)

En-Suite

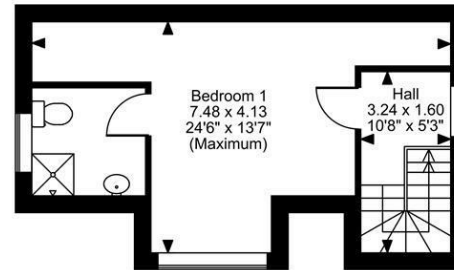
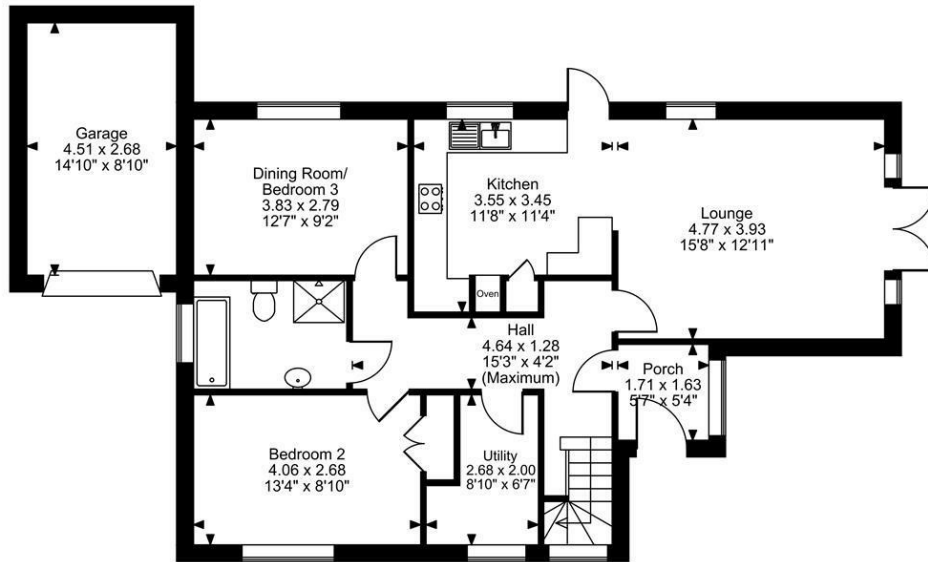
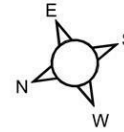
EXTERNALLY

Garage 14'9" x 8'9" (4.51m x 2.68m)



Page & Wells limited for themselves and for the vendors of this property whose agents they are give notice that: 1. These particulars do not constitute any part of, an offer or a contract. 2. All statements contained in these particulars as to this property are made without responsibility on the part of Page & Wells Limited or the Vendor. 3. None of the statements contained in these particulars as to the property is to be relied on as statements or representations of fact. 4. Any intending purchaser must satisfy himself by inspection or otherwise as to the correctness of each of the statements contained in these particulars. 5. The vendor does not make or give, and neither Page & Wells Limited nor any person in their employment has any authority to make or give any representation whatsoever in relation to this property. These particulars are supplied on the understanding that all negotiations are carried out throughout Page & Wells Limited. Properties with a reference prefixes EAA are those which Page & Wells Limited disclose an interest in accordance with the provisions of the Estates Agents Act 1979

Marion Crescent, Maidstone, Kent
 Approximate Gross Internal Area
 Main House = 1121 Sq Ft/104 Sq M
 Garage = 130 Sq Ft/12 Sq M
 Total = 1251 Sq Ft/116 Sq M



Ground Floor

First Floor

FOR ILLUSTRATIVE PURPOSES ONLY - NOT TO SCALE

The position & size of doors, windows, appliances and other features are approximate only.

© ehouse. Unauthorised reproduction prohibited. Drawing ref. dig/8664039/TOW

