



3 Rye Close

Kettering, Northamptonshire NN15 5YW



Simpson & Partners

Welcome to this modern three-bedroom end of terrace house located on the desirable Rye Close in Burton Latimer, Kettering. This property offers a perfect blend of comfort and convenience, making it an ideal choice for families or professionals alike.

As you enter, you are greeted by a spacious reception room that provides a warm and inviting atmosphere, perfect for relaxing or entertaining guests. The well-appointed kitchen/breakfast room features patio doors that lead directly to the low-maintenance rear garden, allowing for seamless indoor-outdoor living. This space is perfect for enjoying morning coffee or hosting summer barbecues.

The master bedroom is a true highlight, complete with built-in wardrobes and an en suite bathroom, providing a private retreat for relaxation. Additionally, there are two further bedrooms, which are well-sized and can be adapted to suit your needs, whether as guest rooms, children's rooms, or a home office. The family bathroom is conveniently located to serve the additional bedrooms.

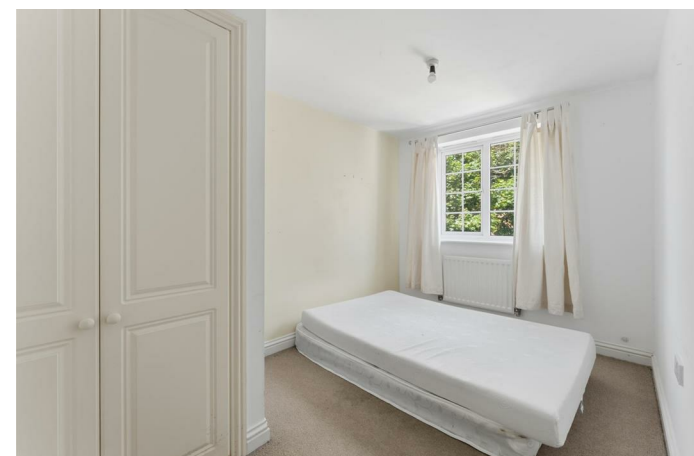
This property also boasts off-road parking, along with a single garage, ensuring ample space for your vehicles and storage needs. The low-maintenance rear garden offers a private outdoor space to unwind without the burden of extensive upkeep.

This home is well-connected to local amenities, schools, and transport links, making it an excellent choice for those seeking a modern lifestyle in a charming setting. Do not miss the opportunity to make this lovely house your new home.

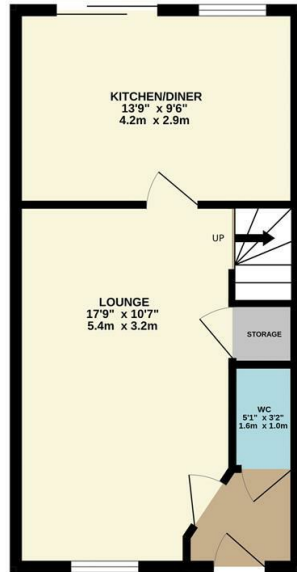


£249,950

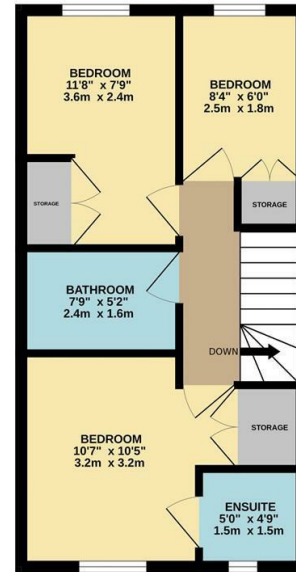
 3  2  1



GROUND FLOOR



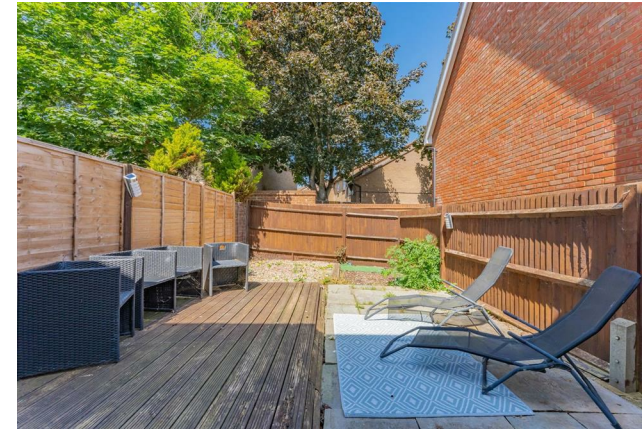
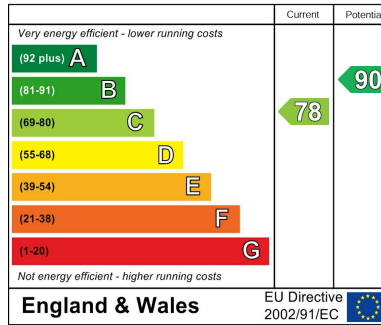
1ST FLOOR



Whilst every attempt has been made to ensure the accuracy of the floorplan contained here, measurements of doors, windows, rooms and any other items are approximate and no responsibility is taken for any error, omission or mis-statement. This plan is for illustrative purposes only and should be used as such by any prospective purchaser. The services, systems and appliances shown have not been tested and no guarantee as to their operability or efficiency can be given.
Made with Metropop ©2020.



Energy Efficiency Rating



When you buy with Simpson and Partners, you know **you'll be in safe hands**. From the moment you walk through our doors, we'll make you **feel truly welcome**. Our sales consultants and financial advisors will take you through **every step of the process**, offering **free expert advice** along the way, from help choosing the right mortgage and insurance through to finding your conveyancer. And if you need help selling your home too, **with over 20 years of local experience, you can trust us to get you moving**.



**Simpson
& Partners**

Making Every
Journey Personal



01536 518200

kettering@simpsonandpartners.co.uk

<https://www.simpsonandpartners.co.uk/>

1 Silver Street, Kettering, Northants, NN16 0BN