



## Talbot Road, TW7

£475,000

This beautifully presented one bedroom split-level maisonette is offered to the market with no onward chain. The property benefits from a private courtyard garden and immaculate modern interiors throughout. Combining contemporary living with practical design, this property makes an ideal purchase for first time buyers, professionals or investors.

Talbot Road is a popular residential road located on the borders of St Margarets and Old Isleworth with easy access to transport links. St Margarets village, the River Thames and Old Deer Park are all a short walk away.

### Features

- Split-Level Maisonette
- Beautifully Presented
- One Bedroom
- Two Bathrooms
- Private Courtyard Garden
- No Onward Chain



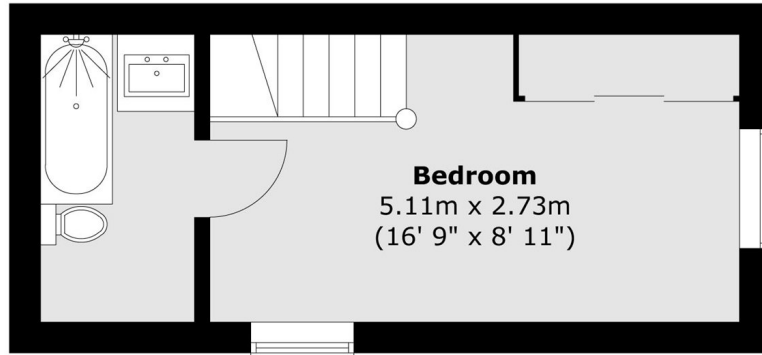
## Talbot Road, TW7

The ground floor features a bright and spacious open-plan reception room and modern kitchen, creating an ideal space for both relaxing and entertaining. The reception room also benefits from a dedicated area, perfect for use as a home office or study. A stylish shower room completes the ground floor accommodation. Upstairs, the generous double bedroom offers excellent integrated wardrobe space and is complemented by a modern en suite bathroom.

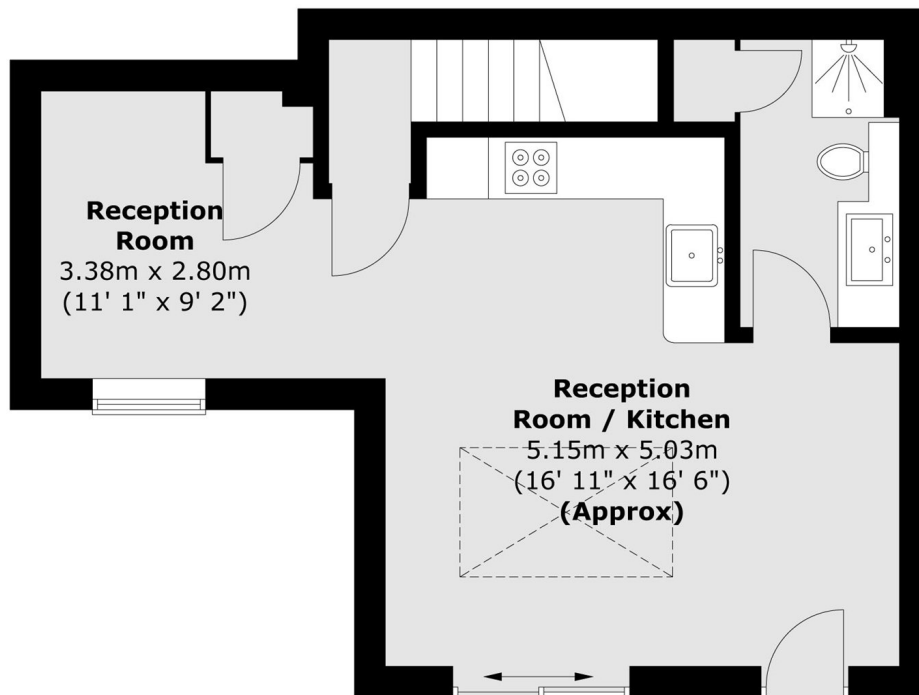


# Talbot Road, Isleworth, TW7

## First Floor



## Ground Floor



Total area (approx.) : 59.7 sq. m (643 sq. ft)