



DANIEL GREEN

exp[®] UK

@ daniel.green@exp.uk.com

danielgreen.exp.uk.com

020 3930 3550 / 07541 999 544

St. Agnells Lane, Hemel Hempstead, HP2

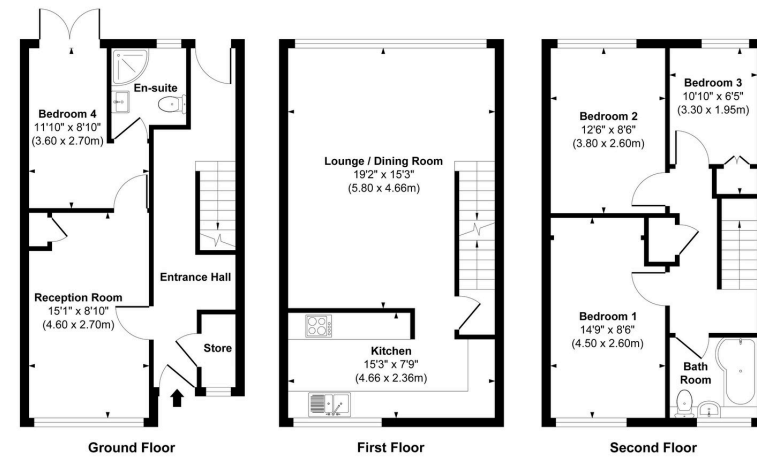
£395,000

🛏️ 4 🚿 2 🚗 2



- Four well-proportioned bedrooms
- Contemporary fitted kitchen with ample storage
- Private rear garden with gated access onto attractive green space
- Potential for loft conversion (STPP)
- Close to transport, school & local amenities
- Bright & spacious lounge/diner ideal for modern family living & entertaining
- Versatile self-contained ground floor annexe with plumbing & electrics in place
- Driveway parking for 2 cars
- Modern Bathroom
- Countryside views





Approx. Gross Internal Floor Area 1,225 sq. ft / 113.77 sq. m.
 This floorplan is intended for illustrative purposes only and should be used as a general guide. All measurements are approximate and not to scale. Exact dimensions should be independently verified.

*****PLEASE QUOTE REFERENCE - DG1277****

An exceptional four-bedroom end-of-terrace townhouse, beautifully presented and perfectly suited for modern family living. Offering versatile accommodation, a private driveway, en-suite and a stunning rear garden backing onto green space—this home ticks every box for space, style, and location.

