



**Turney Street, Nottingham**  
£2,260 pcm | £130pppw Including Bills

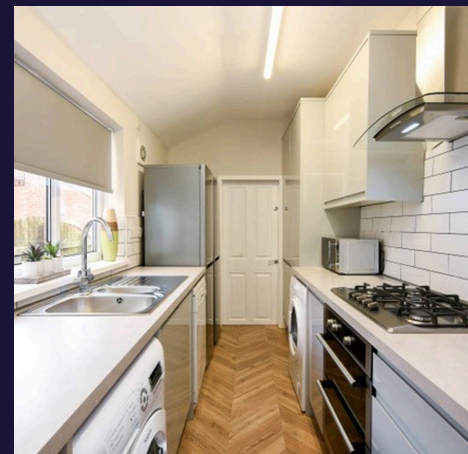
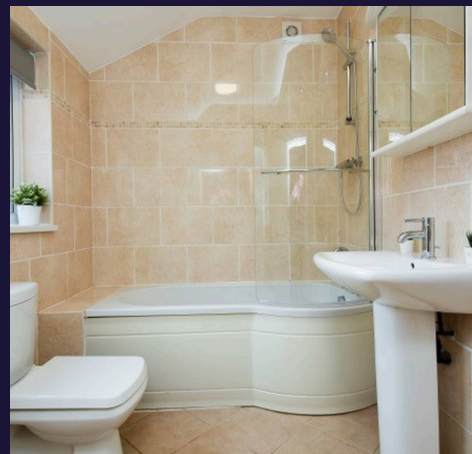
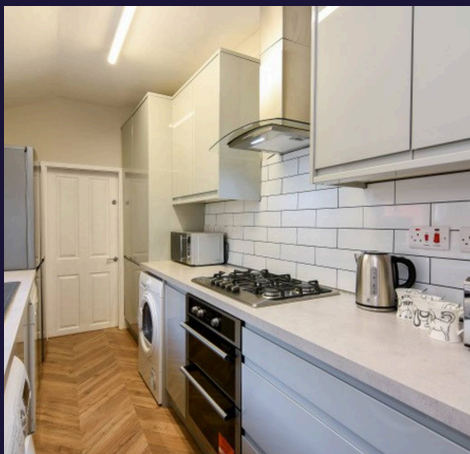


## Turney Street

Nottingham, Nottingham

This contemporary five-bedroom, three-bathroom mid-terraced house is also available to groups of four, offers spacious and stylish accommodation, situated close to the iconic Trent Bridge. The property has a warm and inviting living and dining space that leads directly out onto a small rear outside space. Each bedroom features modern decor, plush carpeting, and thoughtfully designed accent walls, with several rooms offering dedicated workspaces complete with desks and comfortable chairs, ideal for study. The stairs and hallways continue the sophisticated theme with neutral colours, stylish lighting fixtures, and elegant white balustrades, creating a warm and welcoming entry to the upper floors.

The property has a modern kitchen equipped with glossy cabinets, appliances, a gas hob, and chic herringbone style flooring, and ample counter space. The bathrooms are equally impressive. Comfort is prioritised with a modern digital thermostat and temperature control system. Modern artwork, and unique touches such as rustic taps provide character and individuality throughout. With its spacious bedrooms, ample storage via built-in and modern wardrobes, and inviting communal areas, this property is ideally suited for students looking for your home away from home.



This contemporary five-bedroom, three-bathroom mid-terraced house is also available to groups of four, offers spacious and stylish



## Turney Street

Nottingham, Nottingham

| Student Home 2026-27 | £130pppw | Bills Included | No Holding Deposit | Flexible Dates | Recently Refurbished | Four Bed | Three Bath | Between City & West Bridgford | Close to Train & Tram Network | Council Tax band: A

Tenure: Freehold

EPC Energy Efficiency Rating: D

EPC Environmental Impact Rating: E

- Inspire Heating Thermostat
- Student Home For 2026/27
- Recently refurbished throughout
- Walking distance to the River Trent
- Convenient for reaching the Clifton Campus
- Close to West Bridgford and the City Centre
- Cosy and contemporary design
- £130pppw Including Bills & Flexible dates



### **Entrance Hall**

The front entrance leads into the ground floor hallway.

### **Living Room**

12' 0" x 8' 6" (3.66m x 2.60m)

A welcoming space to dine and unwind, featuring two comfortable sofas, a dining table with chairs, Wall mounted TV, Smart Thermostat, a coffee table, and stylish décor throughout. French doors open onto the rear outdoor area, flooding the room with natural light and creating a bright, airy feel.

### **Kitchen**

12' 4" x 6' 5" (3.76m x 1.95m)

A contemporary kitchen with a fully equipped with appliances and plenty of storage space. Appliances include a washing machine, condensing tumble dryer, two fridge freezers, dishwasher, microwave, toaster, kettle, and oven with gas hob.

### **Bedrooms**

Decorated with warm and cosy tones the bedrooms are all furnished with stylish beds with built-in storage drawers, ideal for maximising space and a wardrobe, desk, chair and bedside table. One room has an ensuite and there are two further bathrooms for others.

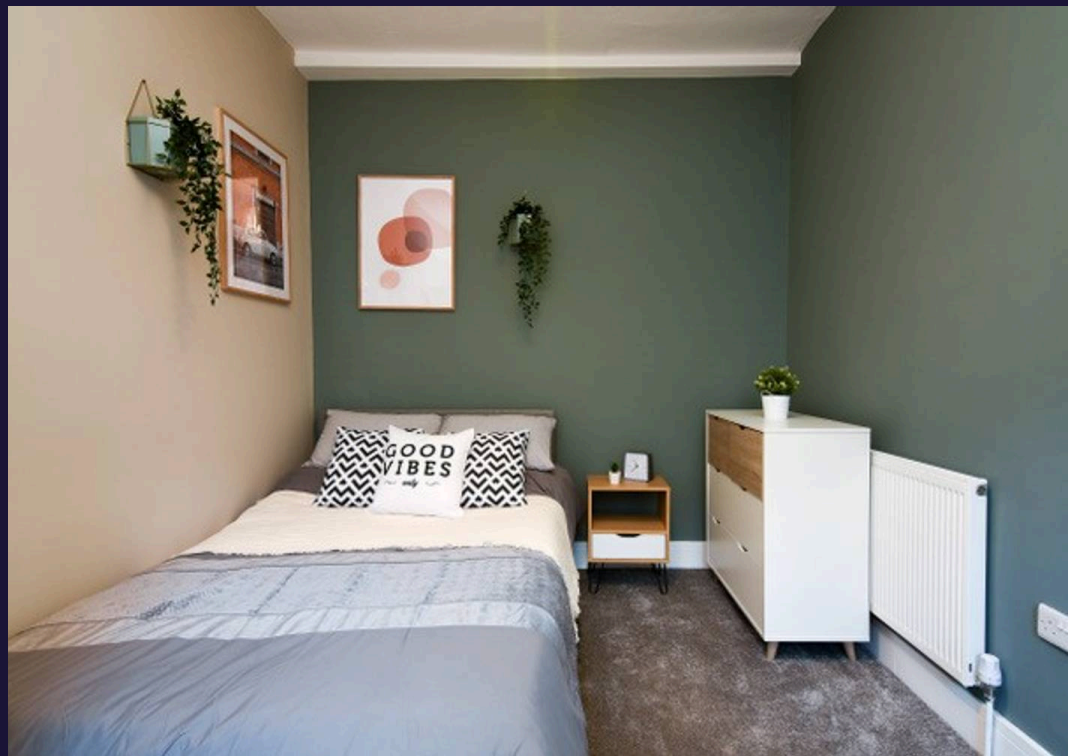
### **Bathrooms**

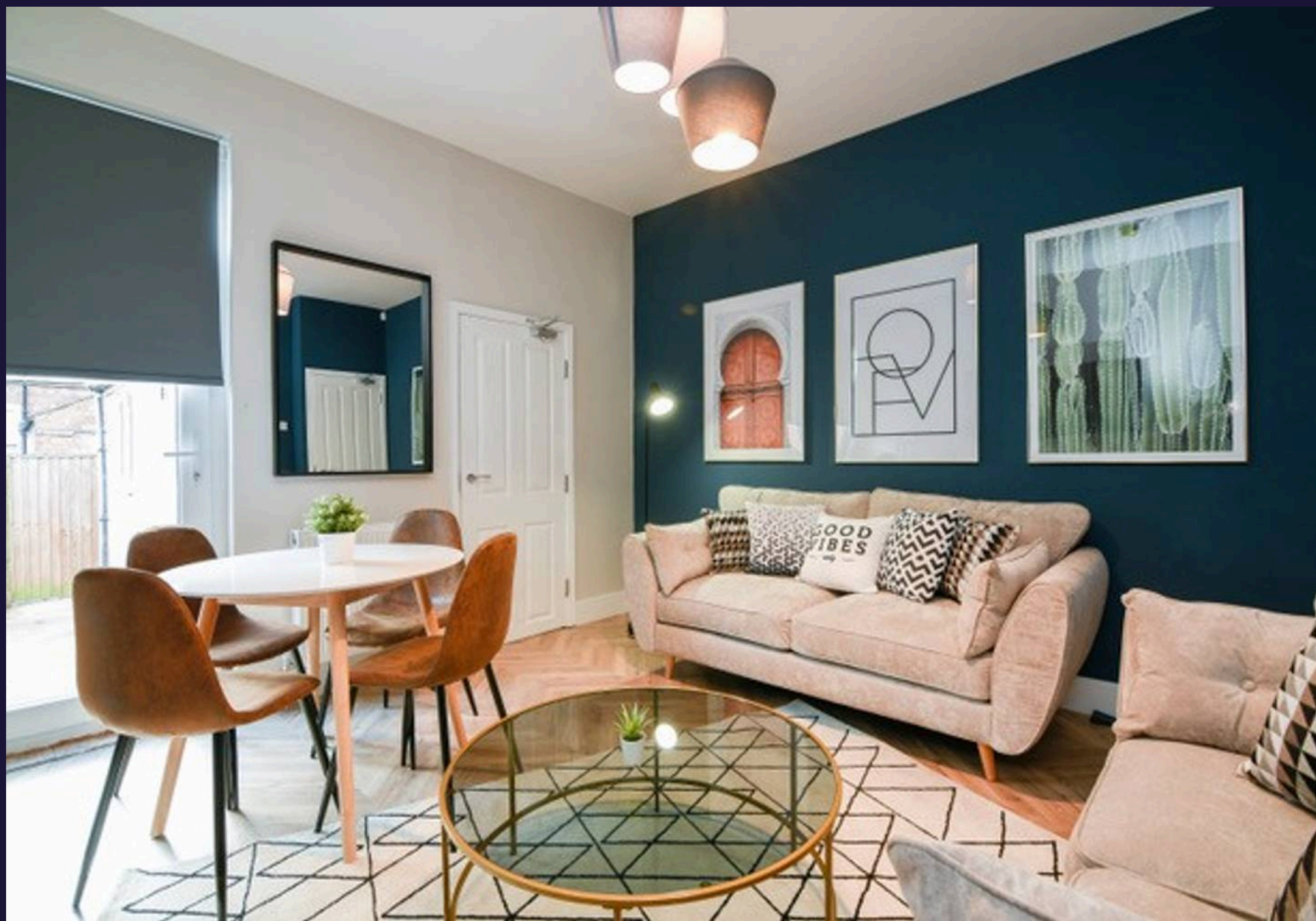
7' 8" x 6' 5" (2.33m x 1.96m)

One bedroom benefits from a private en-suite shower room. In addition, there is a second shower room on the first floor, along with a spacious ground-floor bathroom featuring a shower over the bath.

### **Bills**

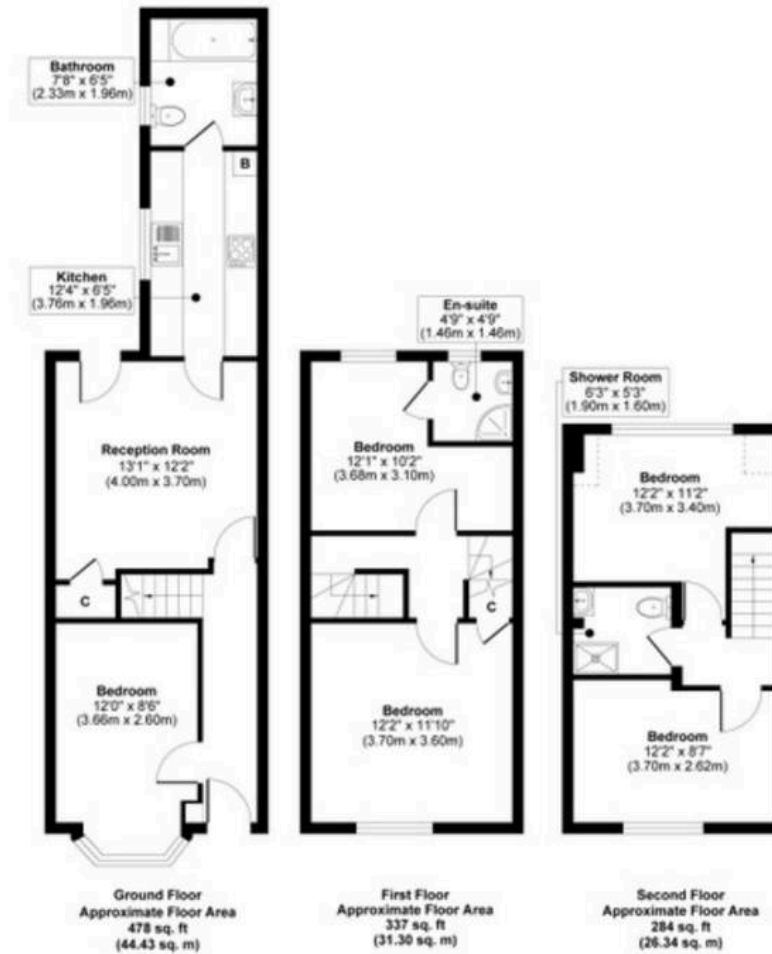
Bills are included in the rent, subject to fair usage which will be outlined in your tenancy agreement. Bills included are Gas, Water, Electricity, internet and TV Licence.. The Tenant is responsible for arranging the supply and payment of all other bills and utilities, if applicable.





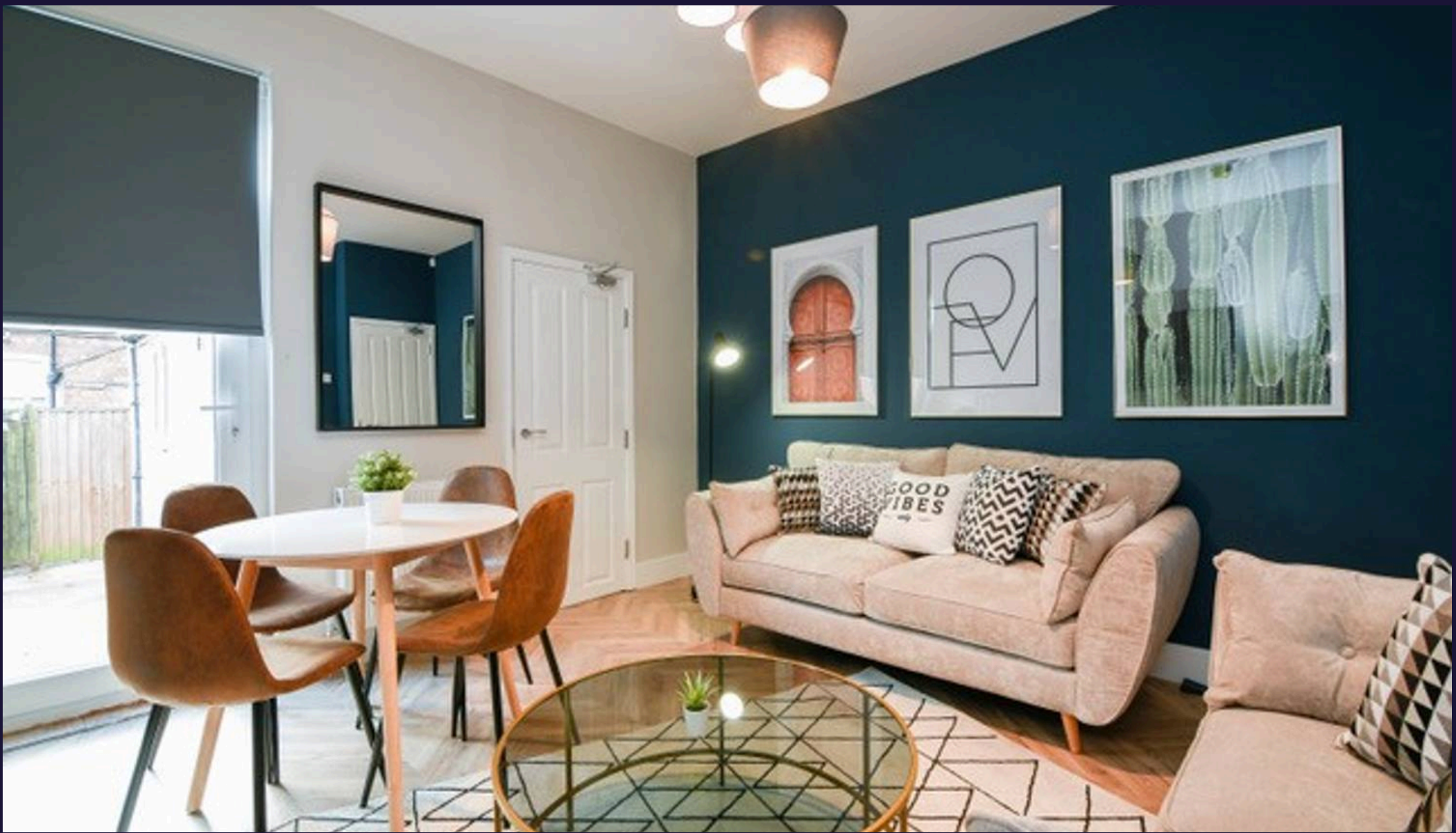


# Comfort Estates



Approx. Gross Internal Floor Area 1099 sq. ft / 102.07 sq. m

Illustration for identification purposes only, measurements are approximate, not to scale.



## Comfort Estates

Comfort Estates, 47 Derby Road - NG1 5AW

0115 9338997 • [info@comfortestates.co.uk](mailto:info@comfortestates.co.uk) • [www.comfortestates.co.uk](http://www.comfortestates.co.uk)